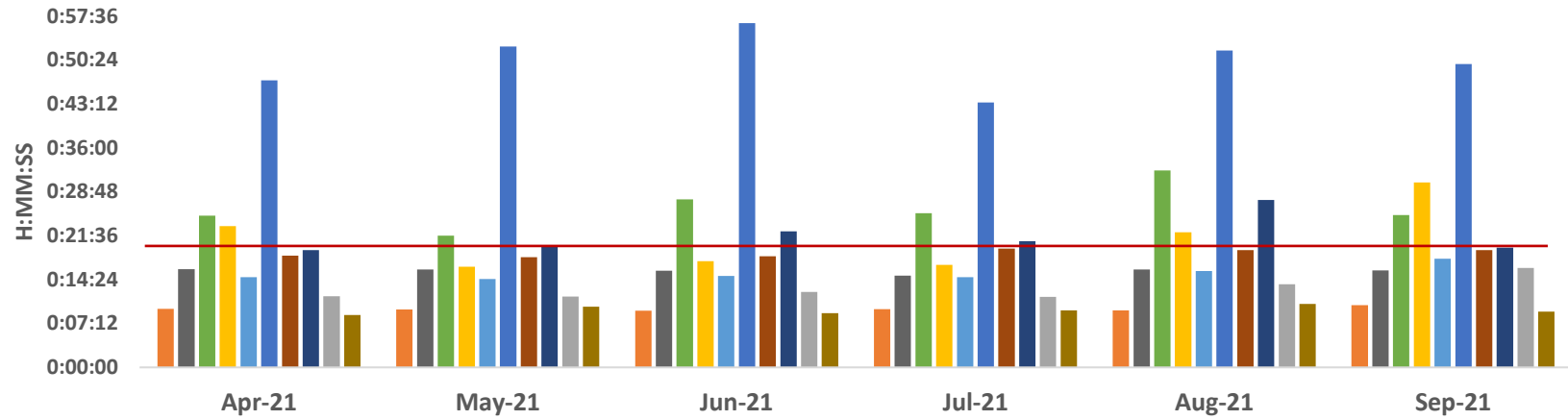


Ambulance Patient Offload Time (APOT) - 90th Percentile



	Apr-21	May-21	Jun-21	Jul-21	Aug-21	Sep-21
SHC	0:09:36	0:09:30	0:09:17	0:09:34	0:09:22	0:10:12
ECH	0:16:06	0:16:05	0:15:50	0:15:02	0:16:04	0:15:54
KSC	0:24:54	0:21:35	0:27:35	0:25:16	0:32:19	0:25:00
RMC	0:23:10	0:16:30	0:17:26	0:16:49	0:22:09	0:30:20
OCH	0:14:49	0:14:30	0:14:59	0:14:47	0:15:47	0:17:50
VMC	0:47:05	0:52:39	0:56:29	0:43:28	0:51:58	0:49:47
GSH	0:18:21	0:18:06	0:18:14	0:19:28	0:19:13	0:19:15
KSJ	0:19:14	0:19:54	0:22:20	0:20:42	0:27:28	0:19:39
SLH	0:11:41	0:11:37	0:12:22	0:11:35	0:13:38	0:16:19
LGH	0:08:36	0:09:57	0:08:54	0:09:21	0:10:24	0:09:08

SHC ECH KSC RMC OCH VMC GSH KSJ SLH LGH

	SHC	ECH	KSC	RMC	OCH	VMC	GSH	KSJ	SLH	LGH
Apr-21	0:09:36	0:16:06	0:24:54	0:23:10	0:14:49	0:47:05	0:18:21	0:19:14	0:11:41	0:08:36
May-21	0:09:30	0:16:05	0:21:35	0:16:30	0:14:30	0:52:39	0:18:06	0:19:54	0:11:37	0:09:57
Jun-21	0:09:17	0:15:50	0:27:35	0:17:26	0:14:59	0:56:29	0:18:14	0:22:20	0:12:22	0:08:54
Jul-21	0:09:34	0:15:02	0:25:16	0:16:49	0:14:47	0:43:28	0:19:28	0:20:42	0:11:35	0:09:21
Aug-21	0:09:22	0:16:04	0:32:19	0:22:09	0:15:47	0:51:58	0:19:13	0:27:28	0:13:38	0:10:24
Sep-21	0:10:12	0:15:54	0:25:00	0:30:20	0:17:50	0:49:47	0:19:15	0:19:39	0:16:19	0:09:08

APOT 2 - Sept 2021

	≤ 20 minutes	21-60 minutes	61-120 minutes	121-180 minutes	>180 minutes	Total Patients
SHC	570 99.3%	4 0.7%	0 0.0%	0 0.0%	0 0.0%	574
ECH	782 96.3%	30 3.7%	0 0.0%	0 0.0%	0 0.0%	812
KSC	679 85.5%	114 14.4%	1 0.1%	0 0.0%	0 0.0%	794
RMC	961 83.6%	141 12.3%	42 3.7%	6 0.5%	0 0.0%	1150
OCH	952 93.2%	68 6.7%	1 0.1%	0 0.0%	0 0.0%	1021
VMC	846 74.6%	212 18.7%	67 5.9%	8 0.7%	1 0.1%	1134
GSH	673 91.7%	54 7.4%	2 0.3%	4 0.5%	1 0.1%	734
KSJ	675 92.3%	53 7.3%	3 0.4%	0 0.0%	0 0.0%	731
SLH	380 93.1%	26 6.4%	2 0.5%	0 0.0%	0 0.0%	408
LGH	147 98.0%	3 2.0%	0 0.0%	0 0.0%	0 0.0%	150
TOTAL	6665 88.8%	705 9.4%	118 1.6%	18 0.2%	2 0.0%	7508

