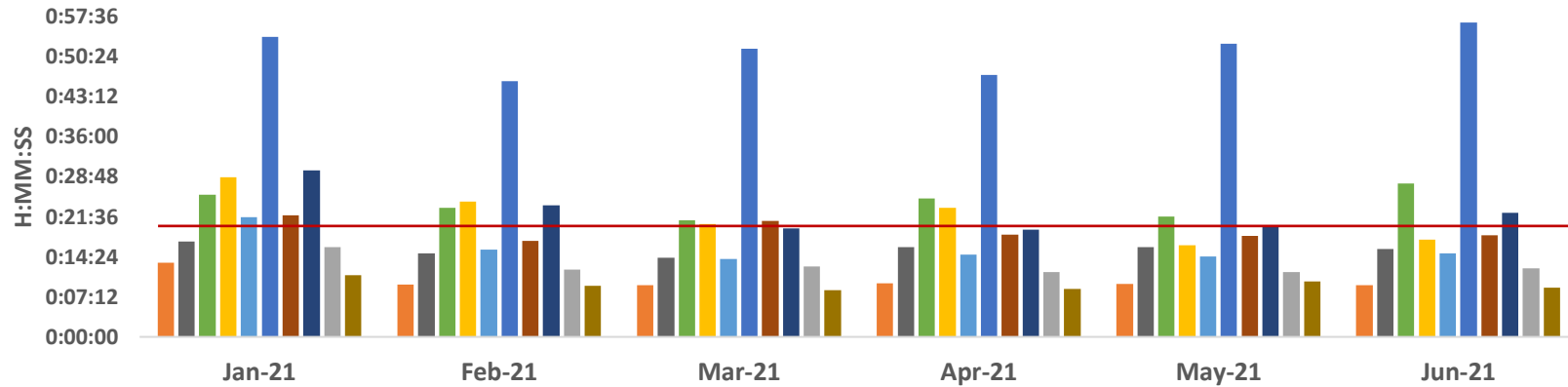


Ambulance Patient Offload Time (APOT) - 90th Percentile



	Jan-21	Feb-21	Mar-21	Apr-21	May-21	Jun-21
SHC	0:13:23	0:09:25	0:09:18	0:09:36	0:09:30	0:09:17
ECH	0:17:09	0:15:00	0:14:13	0:16:06	0:16:05	0:15:50
KSC	0:25:35	0:23:11	0:20:59	0:24:54	0:21:35	0:27:35
RMC	0:28:45	0:24:17	0:20:14	0:23:10	0:16:30	0:17:26
OCH	0:21:34	0:15:41	0:14:02	0:14:49	0:14:30	0:14:59
VMC	0:53:59	0:46:00	0:51:48	0:47:05	0:52:39	0:56:29
GSH	0:21:54	0:17:13	0:20:49	0:18:21	0:18:06	0:18:14
KSJ	0:29:57	0:23:42	0:19:28	0:19:14	0:19:54	0:22:20
SLH	0:16:05	0:12:09	0:12:38	0:11:41	0:11:37	0:12:22
LGH	0:11:04	0:09:13	0:08:25	0:08:36	0:09:57	0:08:54

■ SHC
 ■ ECH
 ■ KSC
 ■ RMC
 ■ OCH
 ■ VMC
 ■ GSH
 ■ KSJ
 ■ SLH
 ■ LGH

	SHC	ECH	KSC	RMC	OCH	VMC	GSH	KSJ	SLH	LGH
Jan-21	0:13:23	0:17:09	0:25:35	0:28:45	0:21:34	0:53:59	0:21:54	0:29:57	0:16:05	0:11:04
Feb-21	0:09:25	0:15:00	0:23:11	0:24:17	0:15:41	0:46:00	0:17:13	0:23:42	0:12:09	0:09:13
Mar-21	0:09:18	0:14:13	0:20:59	0:20:14	0:14:02	0:51:48	0:20:49	0:19:28	0:12:38	0:08:25
Apr-21	0:09:36	0:16:06	0:24:54	0:23:10	0:14:49	0:47:05	0:18:21	0:19:14	0:11:41	0:08:36
May-21	0:09:30	0:16:05	0:21:35	0:16:30	0:14:30	0:52:39	0:18:06	0:19:54	0:11:37	0:09:57
Jun-21	0:09:17	0:15:50	0:27:35	0:17:26	0:14:59	0:56:29	0:18:14	0:22:20	0:12:22	0:08:54

APOT 2 - June 2021

	≤ 20 minutes	21-60 minutes	61-120 minutes	121-180 minutes	>180 minutes	Total Patients
SHC	499 99.8%	1 0.2%	0 0.0%	0 0.0%	0 0.0%	500
ECH	758 96.8%	25 3.2%	0 0.0%	0 0.0%	0 0.0%	783
KSC	612 82.9%	113 15.3%	13 1.8%	0 0.0%	0 0.0%	738
RMC	1129 93.2%	73 6.0%	9 0.7%	0 0.0%	0 0.0%	1211
OCH	889 95.1%	45 4.8%	0 0.0%	1 0.1%	0 0.0%	935
VMC	880 69.6%	274 21.7%	94 7.4%	15 1.2%	1 0.1%	1264
GSH	704 92.8%	52 6.9%	3 0.4%	0 0.0%	0 0.0%	759
KSJ	640 88.5%	81 11.2%	2 0.3%	0 0.0%	0 0.0%	723
SLH	335 96.0%	14 4.0%	0 0.0%	0 0.0%	0 0.0%	349
LGH	118 98.3%	2 1.7%	0 0.0%	0 0.0%	0 0.0%	120
TOTAL	6564 88.9%	680 9.2%	121 1.6%	16 0.2%	1 0.0%	7382

	≤25 minutes
SHC	500 100.0%
ECH	771 98.5%
KSC	651 88.2%
RMC	1151 95.0%
OCH	915 97.9%
VMC	950 75.2%
GSH	726 95.7%
KSJ	665 92.0%
SLH	343 98.3%
LGH	119 99.2%
TOTAL	6791 92.0%