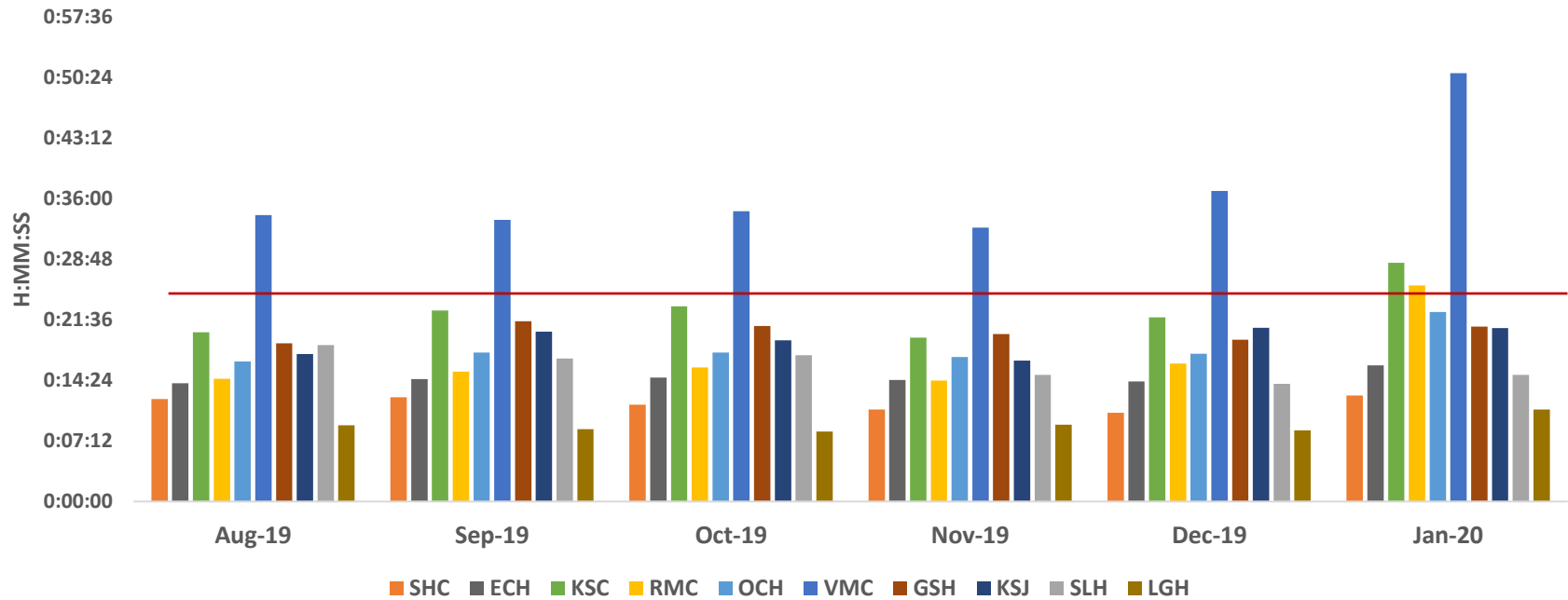


### Ambulance Patient Offload Time (APOT) - 90th Percentile



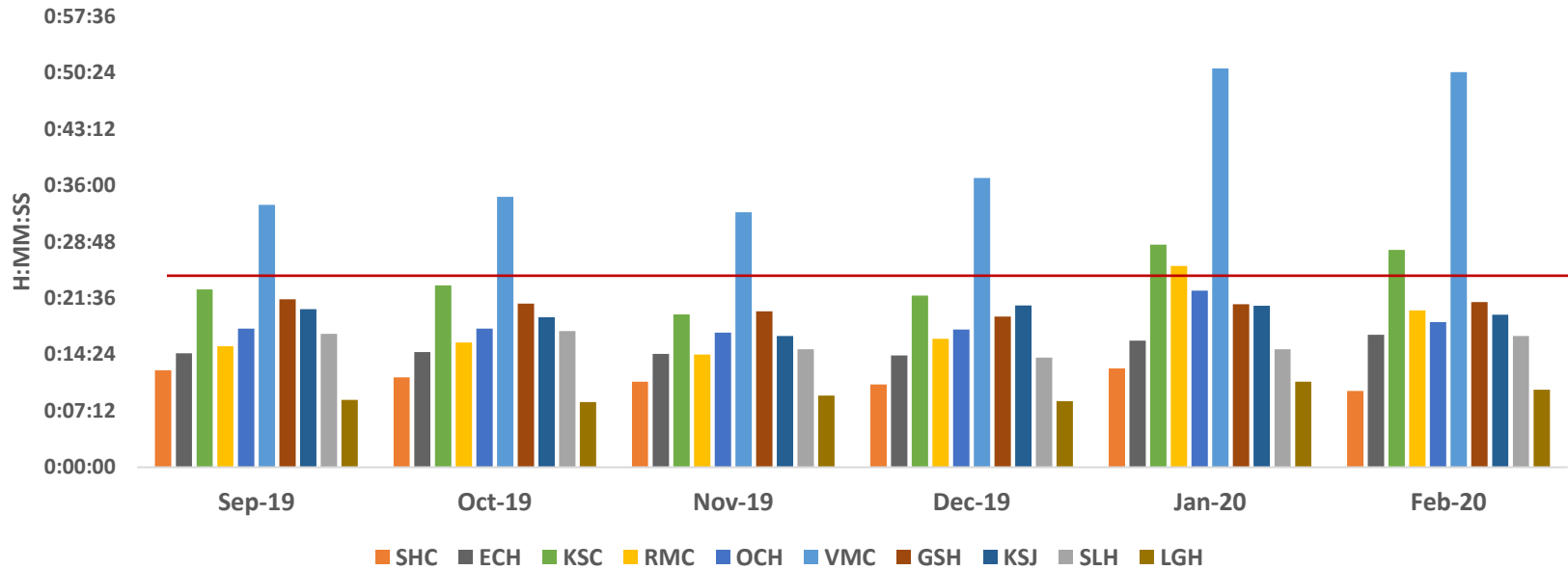
	SHC	ECH	KSC	RMC	OCH	VMC	GSH	KSJ	SLH	LGH
<b>Aug-19</b>	0:12:11	0:14:05	0:20:08	0:14:37	0:16:40	0:34:05	0:18:50	0:17:32	0:18:36	0:09:05
<b>Sep-19</b>	0:12:24	0:14:34	0:22:43	0:15:27	0:17:43	0:33:30	0:21:27	0:20:12	0:17:02	0:08:37
<b>Oct-19</b>	0:11:30	0:14:44	0:23:14	0:15:57	0:17:43	0:34:33	0:20:54	0:19:10	0:17:24	0:08:20
<b>Nov-19</b>	0:10:56	0:14:28	0:19:31	0:14:24	0:17:12	0:32:35	0:19:55	0:16:47	0:15:04	0:09:09
<b>Dec-19</b>	0:10:34	0:14:17	0:21:55	0:16:24	0:17:36	0:36:57	0:19:16	0:20:40	0:14:01	0:08:27
<b>Jan-20</b>	0:12:37	0:16:11	0:28:25	0:25:43	0:22:34	0:50:57	0:20:49	0:20:38	0:15:04	0:10:56

APOT 2 - Jan 20

	≤ 20 minutes	21-60 minutes	61-120 minutes	121-180 minutes	>180 minutes	Total Patients
<b>SHC</b>	535 99.6%	2 0.4%	0 0.0%	0 0.0%	0 0.0%	537
<b>ECH</b>	735 97.5%	19 2.5%	0 0.0%	0 0.0%	0 0.0%	754
<b>KSC</b>	582 79.9%	144 19.8%	2 0.3%	0 0.0%	0 0.0%	728
<b>RMC</b>	1157 86.3%	142 10.6%	26 1.9%	14 1.0%	2 0.1%	1341
<b>OCH</b>	633 87.7%	87 12.0%	2 0.3%	0 0.0%	0 0.0%	722
<b>VMC</b>	951 70.4%	297 22.0%	80 5.9%	16 1.2%	6 0.4%	1350
<b>GSH</b>	713 90.1%	74 9.4%	4 0.5%	0 0.0%	0 0.0%	791
<b>KSJ</b>	642 90.4%	67 9.4%	1 0.1%	0 0.0%	0 0.0%	710
<b>SLH</b>	379 96.7%	13 3.3%	0 0.0%	0 0.0%	0 0.0%	392
<b>LGH</b>	120 99.2%	1 0.8%	0 0.0%	0 0.0%	0 0.0%	121
<b>TOTAL</b>	6447 86.6%	846 11.4%	115 1.5%	30 0.4%	8 0.1%	7446

	≤25 minutes
<b>SHC</b>	536 99.8%
<b>ECH</b>	748 99.2%
<b>KSC</b>	638 87.6%
<b>RMC</b>	1209 90.2%
<b>OCH</b>	668 92.5%
<b>VMC</b>	1024 75.9%
<b>GSH</b>	744 94.1%
<b>KSJ</b>	670 94.4%
<b>SLH</b>	383 97.7%
<b>LGH</b>	121 100.0%
<b>TOTAL</b>	6741 90.5%

### Ambulance Patient Offload Time (APOT) - 90th Percentile



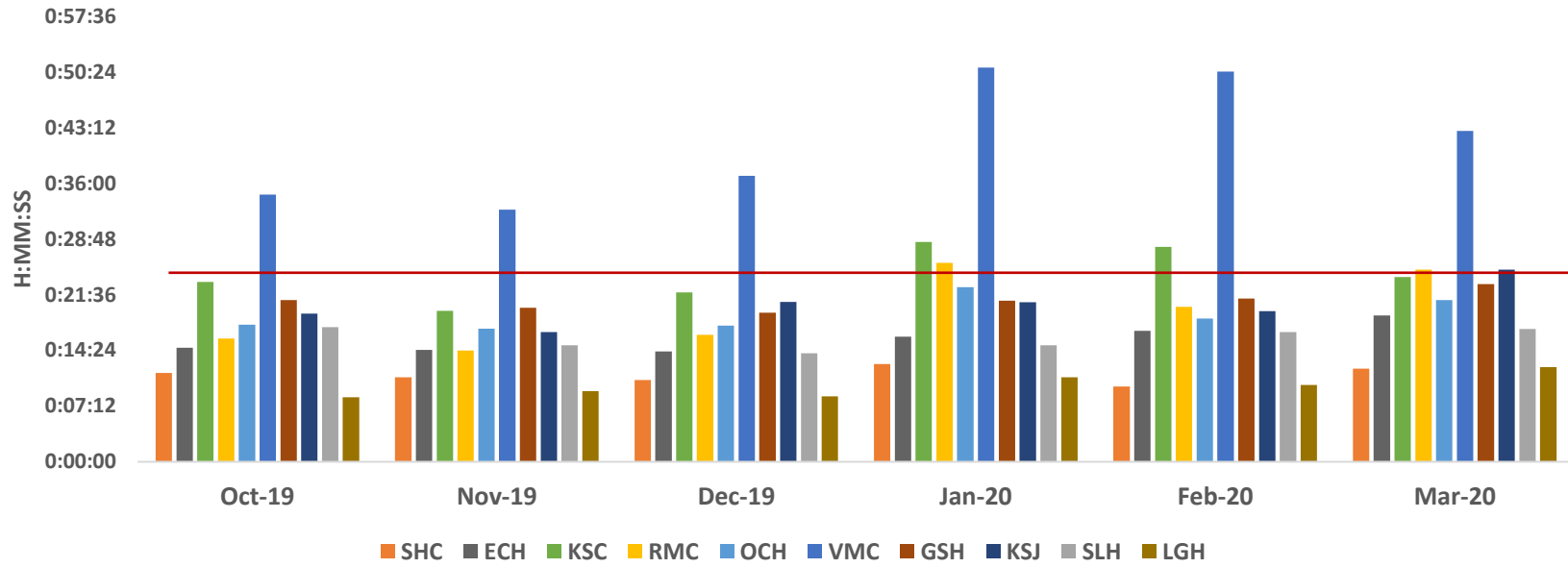
	SHC	ECH	KSC	RMC	OCH	VMC	GSH	KSJ	SLH	LGH
<b>Sep-19</b>	0:12:24	0:14:34	0:22:43	0:15:27	0:17:43	0:33:30	0:21:27	0:20:12	0:17:02	0:08:37
<b>Oct-19</b>	0:11:30	0:14:44	0:23:14	0:15:57	0:17:43	0:34:33	0:20:54	0:19:10	0:17:24	0:08:20
<b>Nov-19</b>	0:10:56	0:14:28	0:19:31	0:14:24	0:17:12	0:32:35	0:19:55	0:16:47	0:15:04	0:09:09
<b>Dec-19</b>	0:10:34	0:14:17	0:21:55	0:16:24	0:17:36	0:36:57	0:19:16	0:20:40	0:14:01	0:08:27
<b>Jan-20</b>	0:12:37	0:16:11	0:28:25	0:25:43	0:22:34	0:50:57	0:20:49	0:20:38	0:15:04	0:10:56
<b>Feb-20</b>	0:09:44	0:16:55	0:27:46	0:20:01	0:18:32	0:50:27	0:21:07	0:19:28	0:16:45	0:09:55

APOT 2 - Feb 20

	≤ 20 minutes	21-60 minutes	61-120 minutes	121-180 minutes	>180 minutes	Total Patients
<b>SHC</b>	457 99.8%	1 0.2%	0 0.0%	0 0.0%	0 0.0%	458
<b>ECH</b>	728 96.3%	28 3.7%	0 0.0%	0 0.0%	0 0.0%	756
<b>KSC</b>	607 79.9%	142 18.7%	11 1.4%	0 0.0%	0 0.0%	760
<b>RMC</b>	1190 89.8%	103 7.8%	26 2.0%	6 0.5%	0 0.0%	1325
<b>OCH</b>	653 93.2%	48 6.8%	0 0.0%	0 0.0%	0 0.0%	701
<b>VMC</b>	911 70.8%	274 21.3%	85 6.6%	17 1.3%	0 0.0%	1287
<b>GSH</b>	713 90.5%	75 9.5%	0 0.0%	0 0.0%	0 0.0%	788
<b>KSJ</b>	645 91.2%	58 8.2%	4 0.6%	0 0.0%	0 0.0%	707
<b>SLH</b>	345 96.4%	13 3.6%	0 0.0%	0 0.0%	0 0.0%	358
<b>LGH</b>	112 98.2%	2 1.8%	0 0.0%	0 0.0%	0 0.0%	114
<b>TOTAL</b>	6361 87.7%	744 10.3%	126 1.7%	23 0.3%	0 0.0%	7254

	≤25 minutes
<b>SHC</b>	457 99.8%
<b>ECH</b>	750 99.2%
<b>KSC</b>	668 87.9%
<b>RMC</b>	1228 92.7%
<b>OCH</b>	634 90.4%
<b>VMC</b>	997 77.5%
<b>GSH</b>	689 87.4%
<b>KSJ</b>	679 96.0%
<b>SLH</b>	352 98.3%
<b>LGH</b>	113 99.1%
<b>TOTAL</b>	6567 90.5%

### Ambulance Patient Offload Time (APOT) - 90th Percentile



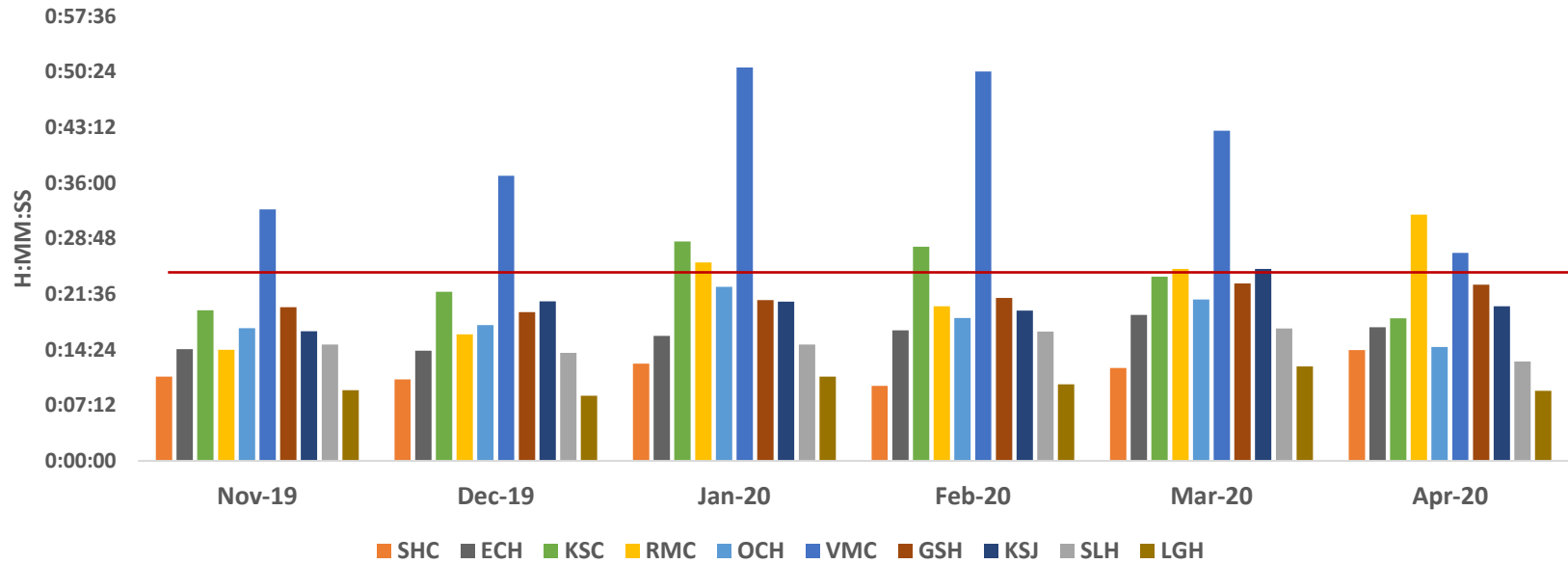
	SHC	ECH	KSC	RMC	OCH	VMC	GSH	KSJ	SLH	LGH
<b>Oct-19</b>	0:11:30	0:14:44	0:23:14	0:15:57	0:17:43	0:34:33	0:20:54	0:19:10	0:17:24	0:08:20
<b>Nov-19</b>	0:10:56	0:14:28	0:19:31	0:14:24	0:17:12	0:32:35	0:19:55	0:16:47	0:15:04	0:09:09
<b>Dec-19</b>	0:10:34	0:14:17	0:21:55	0:16:24	0:17:36	0:36:57	0:19:16	0:20:40	0:14:01	0:08:27
<b>Jan-20</b>	0:12:37	0:16:11	0:28:25	0:25:43	0:22:34	0:50:57	0:20:49	0:20:38	0:15:04	0:10:56
<b>Feb-20</b>	0:09:44	0:16:55	0:27:46	0:20:01	0:18:32	0:50:27	0:21:07	0:19:28	0:16:45	0:09:55
<b>Mar-20</b>	0:12:03	0:18:55	0:23:52	0:24:51	0:20:54	0:42:46	0:22:59	0:24:51	0:17:09	0:12:14

APOT 2 - Mar 20

	≤ 20 minutes	21-60 minutes	61-120 minutes	121-180 minutes	>180 minutes	Total Patients
<b>SHC</b>	401 98.0%	7 1.7%	1 0.2%	0 0.0%	0 0.0%	409
<b>ECH</b>	619 94.5%	34 5.2%	2 0.3%	0 0.0%	0 0.0%	655
<b>KSC</b>	524 85.2%	86 14.0%	4 0.7%	1 0.2%	0 0.0%	615
<b>RMC</b>	1039 86.7%	123 10.3%	26 2.2%	9 0.8%	1 0.1%	1198
<b>OCH</b>	512 90.0%	55 9.7%	2 0.4%	0 0.0%	0 0.0%	569
<b>VMC</b>	853 72.4%	261 22.2%	58 4.9%	6 0.5%	0 0.0%	1178
<b>GSH</b>	599 86.1%	94 13.5%	2 0.3%	1 0.1%	0 0.0%	696
<b>KSJ</b>	556 87.1%	79 12.4%	3 0.5%	0 0.0%	0 0.0%	638
<b>SLH</b>	321 95.5%	14 4.2%	1 0.3%	0 0.0%	0 0.0%	336
<b>LGH</b>	130 98.5%	2 1.5%	0 0.0%	0 0.0%	0 0.0%	132
<b>TOTAL</b>	5554 86.4%	755 11.7%	99 1.5%	17 0.3%	1 0.0%	6426

	≤25 minutes
<b>SHC</b>	406 99.3%
<b>ECH</b>	643 98.2%
<b>KSC</b>	563 91.5%
<b>RMC</b>	1092 91.2%
<b>OCH</b>	541 95.1%
<b>VMC</b>	944 80.1%
<b>GSH</b>	649 93.2%
<b>KSJ</b>	594 93.1%
<b>SLH</b>	328 97.6%
<b>LGH</b>	130 98.5%
<b>TOTAL</b>	5890 91.7%

### Ambulance Patient Offload Time (APOT) - 90th Percentile



	SHC	ECH	KSC	RMC	OCH	VMC	GSH	KSJ	SLH	LGH
<b>Nov-19</b>	0:10:56	0:14:28	0:19:31	0:14:24	0:17:12	0:32:35	0:19:55	0:16:47	0:15:04	0:09:09
<b>Dec-19</b>	0:10:34	0:14:17	0:21:55	0:16:24	0:17:36	0:36:57	0:19:16	0:20:40	0:14:01	0:08:27
<b>Jan-20</b>	0:12:37	0:16:11	0:28:25	0:25:43	0:22:34	0:50:57	0:20:49	0:20:38	0:15:04	0:10:56
<b>Feb-20</b>	0:09:44	0:16:55	0:27:46	0:20:01	0:18:32	0:50:27	0:21:07	0:19:28	0:16:45	0:09:55
<b>Mar-20</b>	0:12:03	0:18:55	0:23:52	0:24:51	0:20:54	0:42:46	0:22:59	0:24:51	0:17:09	0:12:14
<b>Apr-20</b>	0:14:21	0:17:18	0:18:29	0:31:55	0:14:45	0:26:57	0:22:50	0:20:02	0:12:53	0:09:06

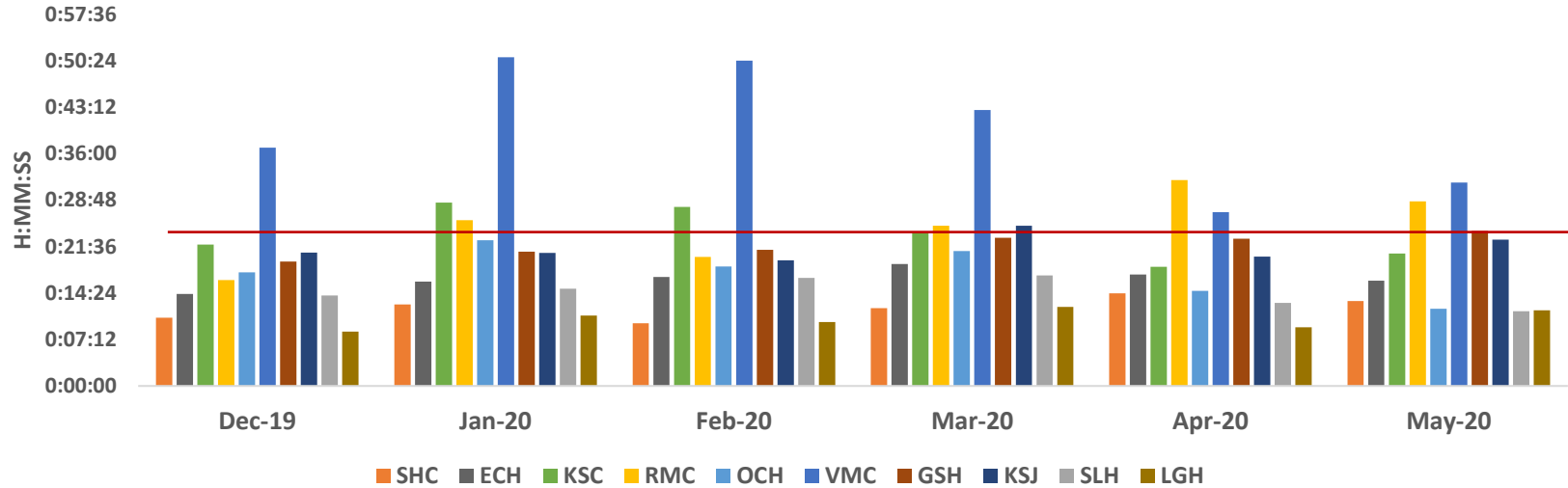
APOT 2 - APR 20

	≤ 20 minutes	21-60 minutes	61-120 minutes	121-180 minutes	>180 minutes	Total Patients
<b>SHC</b>	281 98.9%	2 0.7%	1 0.4%	0 0.0%	0 0.0%	284
<b>ECH</b>	468 96.7%	14 2.9%	2 0.4%	0 0.0%	0 0.0%	484
<b>KSC</b>	477 94.3%	28 5.5%	1 0.2%	0 0.0%	0 0.0%	506
<b>RMC</b>	809 83.0%	127 13.0%	34 3.5%	4 0.4%	1 0.1%	975
<b>OCH</b>	406 97.1%	12 2.9%	0 0.0%	0 0.0%	0 0.0%	418
<b>VMC</b>	900 82.8%	165 15.2%	22 2.0%	0 0.0%	0 0.0%	1087
<b>GSH</b>	458 88.6%	58 11.2%	1 0.2%	0 0.0%	0 0.0%	517
<b>KSJ</b>	421 90.5%	44 9.5%	0 0.0%	0 0.0%	0 0.0%	465
<b>SLH</b>	282 98.9%	3 1.1%	0 0.0%	0 0.0%	0 0.0%	285
<b>LGH</b>	79 98.8%	1 1.3%	0 0.0%	0 0.0%	0 0.0%	80
<b>TOTAL</b>	4581 89.8%	454 8.9%	61 1.2%	4 0.1%	1 0.0%	5101

	≤25 minutes
<b>SHC</b>	281 98.9%
<b>ECH</b>	479 99.0%
<b>KSC</b>	492 97.2%
<b>RMC</b>	848 87.0%
<b>OCH</b>	411 98.3%
<b>VMC</b>	970 89.2%
<b>GSH</b>	478 92.5%
<b>KSJ</b>	446 95.9%
<b>SLH</b>	283 99.3%
<b>LGH</b>	79 98.8%
<b>TOTAL</b>	4767 93.5%



### Ambulance Patient Offload Time (APOT) - 90th Percentile



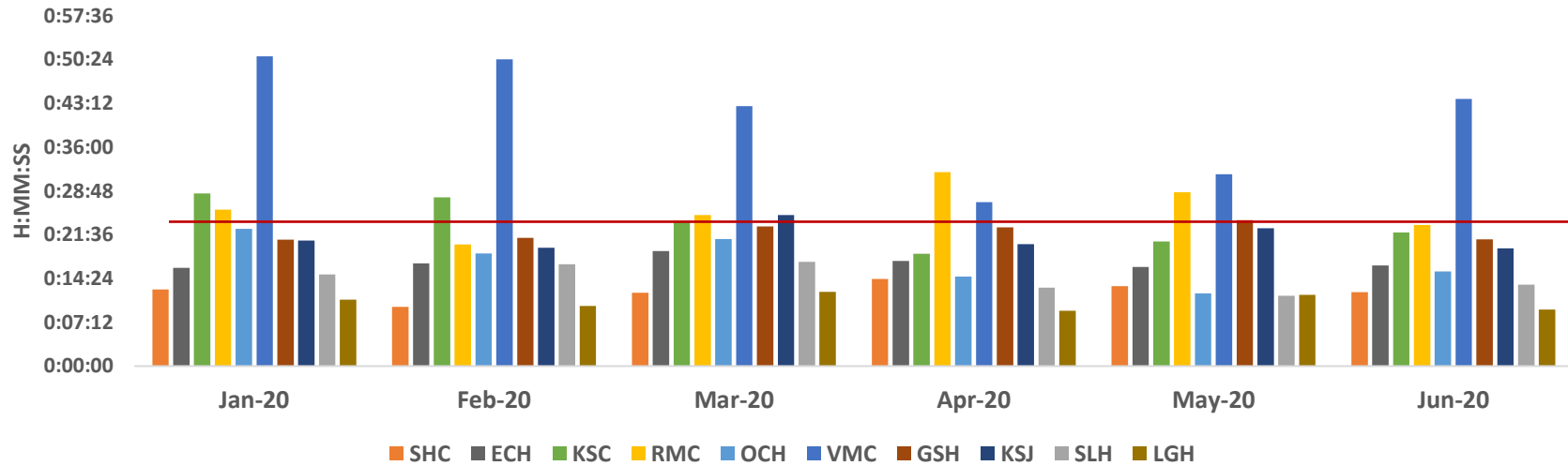
	SHC	ECH	KSC	RMC	OCH	VMC	GSH	KSJ	SLH	LGH
<b>Dec-19</b>	0:10:34	0:14:17	0:21:55	0:16:24	0:17:36	0:36:57	0:19:16	0:20:40	0:14:01	0:08:27
<b>Jan-20</b>	0:12:37	0:16:11	0:28:25	0:25:43	0:22:34	0:50:57	0:20:49	0:20:38	0:15:04	0:10:56
<b>Feb-20</b>	0:09:44	0:16:55	0:27:46	0:20:01	0:18:32	0:50:27	0:21:07	0:19:28	0:16:45	0:09:55
<b>Mar-20</b>	0:12:03	0:18:55	0:23:52	0:24:51	0:20:54	0:42:46	0:22:59	0:24:51	0:17:09	0:12:14
<b>Apr-20</b>	0:14:21	0:17:18	0:18:29	0:31:55	0:14:45	0:26:57	0:22:50	0:20:02	0:12:53	0:09:06
<b>May-20</b>	0:13:10	0:16:18	0:20:31	0:28:36	0:11:59	0:31:32	0:24:01	0:22:41	0:11:35	0:11:43

APOT 2 - MAY 20

	≤ 20 minutes	21-60 minutes	61-120 minutes	121-180 minutes	>180 minutes	Total Patients
<b>SHC</b>	375 99.2%	3 0.8%	0 0.0%	0 0.0%	0 0.0%	378
<b>ECH</b>	603 97.6%	14 2.3%	1 0.2%	0 0.0%	0 0.0%	618
<b>KSC</b>	531 91.1%	51 8.7%	1 0.2%	0 0.0%	0 0.0%	583
<b>RMC</b>	870 84.3%	137 13.3%	23 2.2%	2 0.2%	0 0.0%	1032
<b>OCH</b>	500 99.4%	3 0.6%	0 0.0%	0 0.0%	0 0.0%	503
<b>VMC</b>	1045 80.2%	217 16.7%	39 3.0%	2 0.2%	0 0.0%	1303
<b>GSH</b>	552 87.2%	77 12.2%	4 0.6%	0 0.0%	0 0.0%	633
<b>KSJ</b>	547 88.5%	65 10.5%	6 1.0%	0 0.0%	0 0.0%	618
<b>SLH</b>	299 99.3%	2 0.7%	0 0.0%	0 0.0%	0 0.0%	301
<b>LGH</b>	108 100.0%	0 0.0%	0 0.0%	0 0.0%	0 0.0%	108
<b>TOTAL</b>	5430 89.4%	569 9.4%	74 1.2%	4 0.1%	0 0.0%	6077

	≤25 minutes
<b>SHC</b>	377 99.7%
<b>ECH</b>	613 99.2%
<b>KSC</b>	551 94.5%
<b>RMC</b>	915 88.7%
<b>OCH</b>	502 99.8%
<b>VMC</b>	1111 85.3%
<b>GSH</b>	580 91.6%
<b>KSJ</b>	572 92.6%
<b>SLH</b>	300 99.7%
<b>LGH</b>	108 100.0%
<b>TOTAL</b>	5629 92.6%

### Ambulance Patient Offload Time (APOT) - 90th Percentile



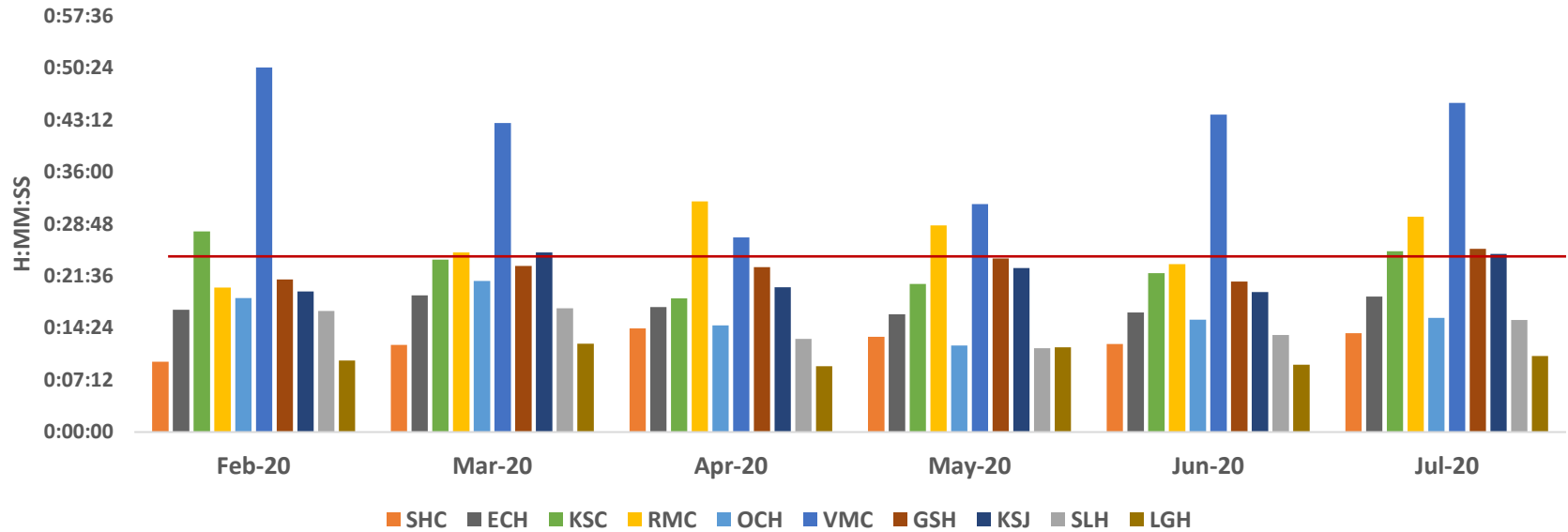
	SHC	ECH	KSC	RMC	OCH	VMC	GSH	KSJ	SLH	LGH
<b>Jan-20</b>	0:12:37	0:16:11	0:28:25	0:25:43	0:22:34	0:50:57	0:20:49	0:20:38	0:15:04	0:10:56
<b>Feb-20</b>	0:09:44	0:16:55	0:27:46	0:20:01	0:18:32	0:50:27	0:21:07	0:19:28	0:16:45	0:09:55
<b>Mar-20</b>	0:12:03	0:18:55	0:23:52	0:24:51	0:20:54	0:42:46	0:22:59	0:24:51	0:17:09	0:12:14
<b>Apr-20</b>	0:14:21	0:17:18	0:18:29	0:31:55	0:14:45	0:26:57	0:22:50	0:20:02	0:12:53	0:09:06
<b>May-20</b>	0:13:10	0:16:18	0:20:31	0:28:36	0:11:59	0:31:32	0:24:01	0:22:41	0:11:35	0:11:43
<b>Jun-20</b>	0:12:11	0:16:34	0:22:00	0:23:14	0:15:33	0:43:55	0:20:50	0:19:23	0:13:25	0:09:18

APOT 2 - JUNE 20

	≤ 20 minutes	21-60 minutes	61-120 minutes	121-180 minutes	>180 minutes	Total Patients
<b>SHC</b>	406 99.0%	4 1.0%	0 0.0%	0 0.0%	0 0.0%	410
<b>ECH</b>	599 96.1%	23 3.7%	1 0.2%	0 0.0%	0 0.0%	623
<b>KSC</b>	492 88.5%	63 11.3%	1 0.2%	0 0.0%	0 0.0%	556
<b>RMC</b>	934 88.1%	109 10.3%	16 1.5%	1 0.1%	0 0.0%	1060
<b>OCH</b>	544 96.1%	22 3.9%	0 0.0%	0 0.0%	0 0.0%	566
<b>VMC</b>	983 76.3%	229 17.8%	72 5.6%	4 0.3%	1 0.1%	1289
<b>GSH</b>	537 90.3%	57 9.6%	1 0.2%	0 0.0%	0 0.0%	595
<b>KSJ</b>	545 92.1%	44 7.4%	3 0.5%	0 0.0%	0 0.0%	592
<b>SLH</b>	337 97.4%	9 2.6%	0 0.0%	0 0.0%	0 0.0%	346
<b>LGH</b>	127 100.0%	0 0.0%	0 0.0%	0 0.0%	0 0.0%	127
<b>TOTAL</b>	5504 89.3%	560 9.1%	94 1.5%	5 0.1%	1 0.0%	6164

	≤25 minutes
<b>SHC</b>	408 99.5%
<b>ECH</b>	612 98.2%
<b>KSC</b>	523 94.1%
<b>RMC</b>	968 91.3%
<b>OCH</b>	555 98.1%
<b>VMC</b>	1048 81.3%
<b>GSH</b>	558 93.8%
<b>KSJ</b>	562 94.9%
<b>SLH</b>	340 98.3%
<b>LGH</b>	127 100.0%
<b>TOTAL</b>	5701 92.5%

### Ambulance Patient Offload Time (APOT) - 90th Percentile



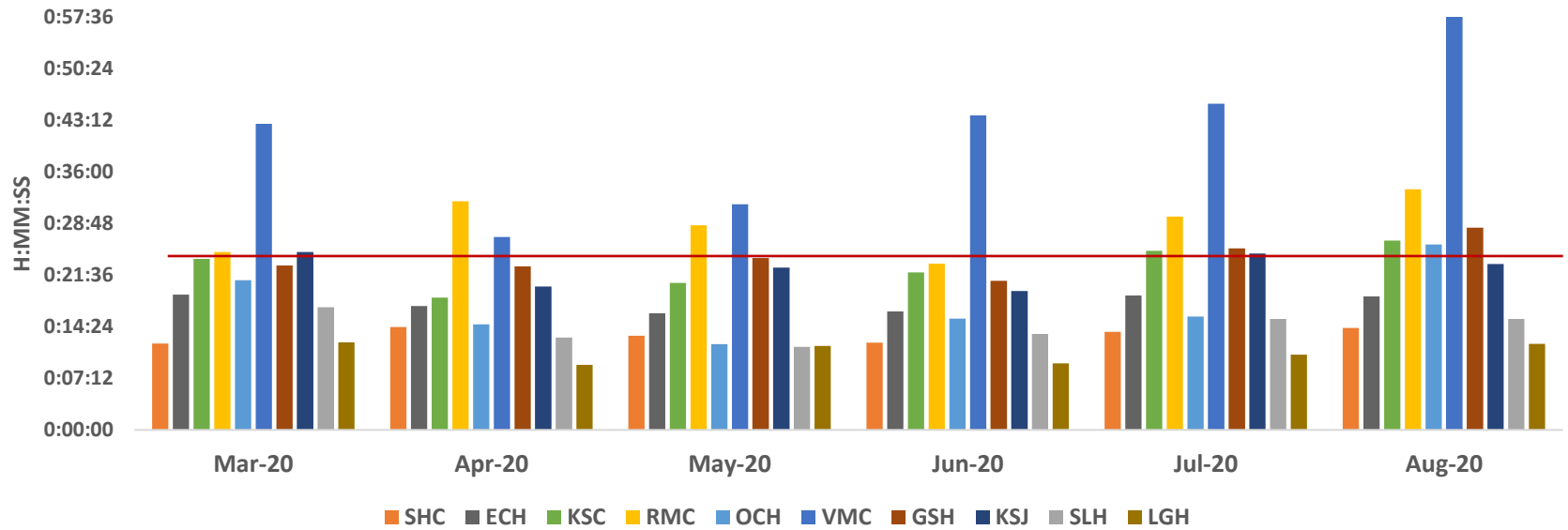
	SHC	ECH	KSC	RMC	OCH	VMC	GSH	KSJ	SLH	LGH
<b>Feb-20</b>	0:09:44	0:16:55	0:27:46	0:20:01	0:18:32	0:50:27	0:21:07	0:19:28	0:16:45	0:09:55
<b>Mar-20</b>	0:12:03	0:18:55	0:23:52	0:24:51	0:20:54	0:42:46	0:22:59	0:24:51	0:17:09	0:12:14
<b>Apr-20</b>	0:14:21	0:17:18	0:18:29	0:31:55	0:14:45	0:26:57	0:22:50	0:20:02	0:12:53	0:09:06
<b>May-20</b>	0:13:10	0:16:18	0:20:31	0:28:36	0:11:59	0:31:32	0:24:01	0:22:41	0:11:35	0:11:43
<b>Jun-20</b>	0:12:11	0:16:34	0:22:00	0:23:14	0:15:33	0:43:55	0:20:50	0:19:23	0:13:25	0:09:18
<b>Jul-20</b>	0:13:42	0:18:46	0:25:01	0:29:48	0:15:49	0:45:33	0:25:21	0:24:38	0:15:31	0:10:31

APOT 2 - JULY 20

	≤ 20 minutes	21-60 minutes	61-120 minutes	121-180 minutes	>180 minutes	Total Patients
<b>SHC</b>	419 100.0%	0 0.0%	0 0.0%	0 0.0%	0 0.0%	419
<b>ECH</b>	630 93.8%	42 6.3%	0 0.0%	0 0.0%	0 0.0%	672
<b>KSC</b>	551 86.1%	86 13.4%	3 0.5%	0 0.0%	0 0.0%	640
<b>RMC</b>	952 84.2%	157 13.9%	21 1.9%	0 0.0%	0 0.0%	1130
<b>OCH</b>	600 95.1%	30 4.8%	1 0.2%	0 0.0%	0 0.0%	631
<b>VMC</b>	964 71.3%	302 22.3%	68 5.0%	17 1.3%	1 0.1%	1352
<b>GSH</b>	572 85.5%	88 13.2%	9 1.3%	0 0.0%	0 0.0%	669
<b>KSJ</b>	599 86.8%	81 11.7%	3 0.4%	7 1.0%	0 0.0%	690
<b>SLH</b>	301 95.6%	13 4.1%	1 0.3%	0 0.0%	0 0.0%	315
<b>LGH</b>	112 100.0%	0 0.0%	0 0.0%	0 0.0%	0 0.0%	112
<b>TOTAL</b>	5700 86.0%	799 12.1%	106 1.6%	24 0.4%	1 0.0%	6630

	≤25 minutes
<b>SHC</b>	419 100.0%
<b>ECH</b>	658 97.9%
<b>KSC</b>	583 91.1%
<b>RMC</b>	993 87.9%
<b>OCH</b>	615 97.5%
<b>VMC</b>	1043 77.1%
<b>GSH</b>	606 90.6%
<b>KSJ</b>	630 91.3%
<b>SLH</b>	308 97.8%
<b>LGH</b>	112 100.0%
<b>TOTAL</b>	5967 90.0%

### Ambulance Patient Offload Time (APOT) - 90th Percentile



	SHC	ECH	KSC	RMC	OCH	VMC	GSH	KSJ	SLH	LGH
<b>Mar-20</b>	0:12:03	0:18:55	0:23:52	0:24:51	0:20:54	0:42:46	0:22:59	0:24:51	0:17:09	0:12:14
<b>Apr-20</b>	0:14:21	0:17:18	0:18:29	0:31:55	0:14:45	0:26:57	0:22:50	0:20:02	0:12:53	0:09:06
<b>May-20</b>	0:13:10	0:16:18	0:20:31	0:28:36	0:11:59	0:31:32	0:24:01	0:22:41	0:11:35	0:11:43
<b>Jun-20</b>	0:12:11	0:16:34	0:22:00	0:23:14	0:15:33	0:43:55	0:20:50	0:19:23	0:13:25	0:09:18
<b>Jul-20</b>	0:13:42	0:18:46	0:25:01	0:29:48	0:15:49	0:45:33	0:25:21	0:24:38	0:15:31	0:10:31
<b>Aug-20</b>	0:14:14	0:18:38	0:26:27	0:33:38	0:25:54	1:09:55	0:28:15	0:23:10	0:15:31	0:12:02

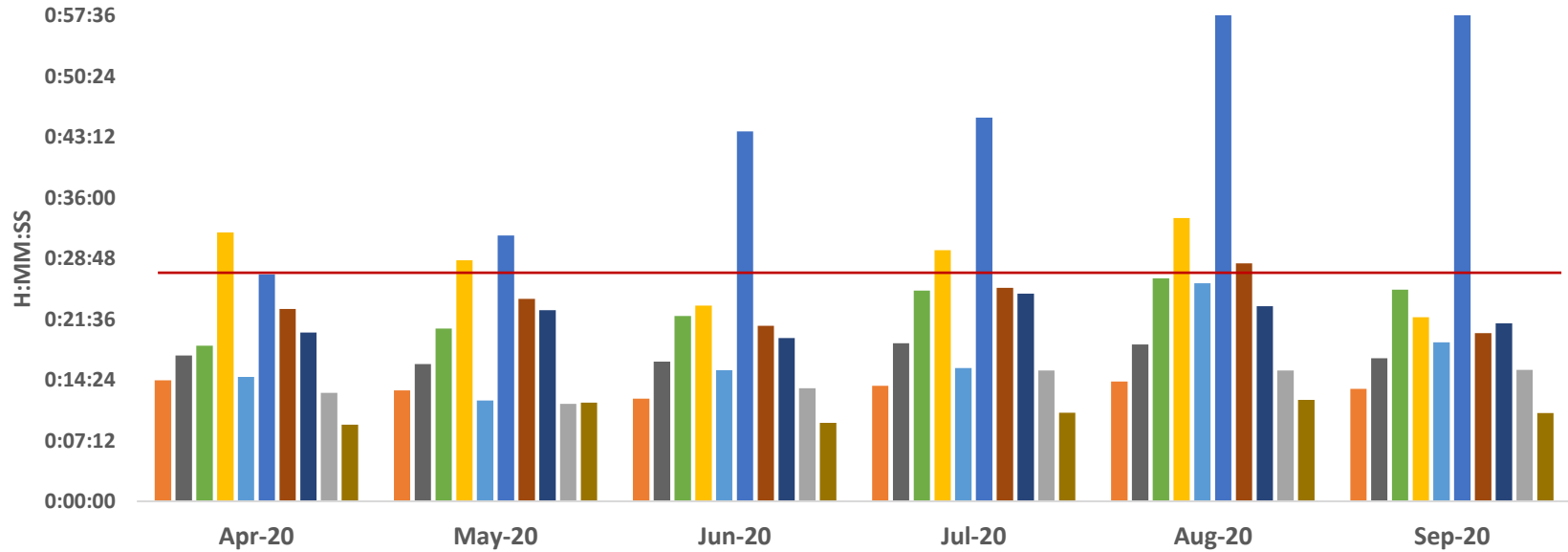
APOT 2 - August 20

	≤ 20 minutes	21-60 minutes	61-120 minutes	121-180 minutes	>180 minutes	Total Patients
<b>SHC</b>	406 99.0%	4 1.0%	0 0.0%	0 0.0%	0 0.0%	410
<b>ECH</b>	699 94.5%	39 5.3%	2 0.3%	0 0.0%	0 0.0%	740
<b>KSC</b>	580 83.5%	112 16.1%	3 0.4%	0 0.0%	0 0.0%	695
<b>RMC</b>	956 81.4%	159 13.5%	41 3.5%	13 1.1%	5 0.4%	1174
<b>OCH</b>	640 85.1%	108 14.4%	4 0.5%	0 0.0%	0 0.0%	752
<b>VMC</b>	906 67.1%	287 21.2%	124 9.2%	33 2.4%	1 0.1%	1351
<b>GSH</b>	622 83.4%	111 14.9%	13 1.7%	0 0.0%	0 0.0%	746
<b>KSJ</b>	579 88.1%	72 11.0%	6 0.9%	0 0.0%	0 0.0%	657
<b>SLH</b>	352 95.1%	16 4.3%	2 0.5%	0 0.0%	0 0.0%	370
<b>LGH</b>	126 98.4%	2 1.6%	0 0.0%	0 0.0%	0 0.0%	128
<b>TOTAL</b>	5866 83.5%	910 13.0%	195 2.8%	46 0.7%	6 0.1%	7023

	≤25 minutes
<b>SHC</b>	408 99.5%
<b>ECH</b>	716 96.8%
<b>KSC</b>	623 89.6%
<b>RMC</b>	1004 85.5%
<b>OCH</b>	677 90.0%
<b>VMC</b>	990 73.3%
<b>GSH</b>	658 88.2%
<b>KSJ</b>	607 92.4%
<b>SLH</b>	353 95.4%
<b>LGH</b>	125 97.7%
<b>TOTAL</b>	6161 87.7%



### Ambulance Patient Offload Time (APOT) - 90th Percentile



	Apr-20	May-20	Jun-20	Jul-20	Aug-20	Sep-20
SHC	0:14:21	0:13:10	0:12:11	0:13:42	0:14:14	0:13:21
ECH	0:17:18	0:16:18	0:16:34	0:18:46	0:18:38	0:16:58
KSC	0:18:29	0:20:31	0:22:00	0:25:01	0:26:27	0:25:08
RMC	0:31:55	0:28:36	0:23:14	0:29:48	0:33:38	0:21:51
OCH	0:14:45	0:11:59	0:15:33	0:15:49	0:25:54	0:18:52
VMC	0:26:57	0:31:32	0:43:55	0:45:33	1:09:55	0:59:17
GSH	0:22:50	0:24:01	0:20:50	0:25:21	0:28:15	0:19:58
KSJ	0:20:02	0:22:41	0:19:23	0:24:38	0:23:10	0:21:08
SLH	0:12:53	0:11:35	0:13:25	0:15:31	0:15:31	0:15:37
LGH	0:09:06	0:11:43	0:09:18	0:10:31	0:12:02	0:10:28

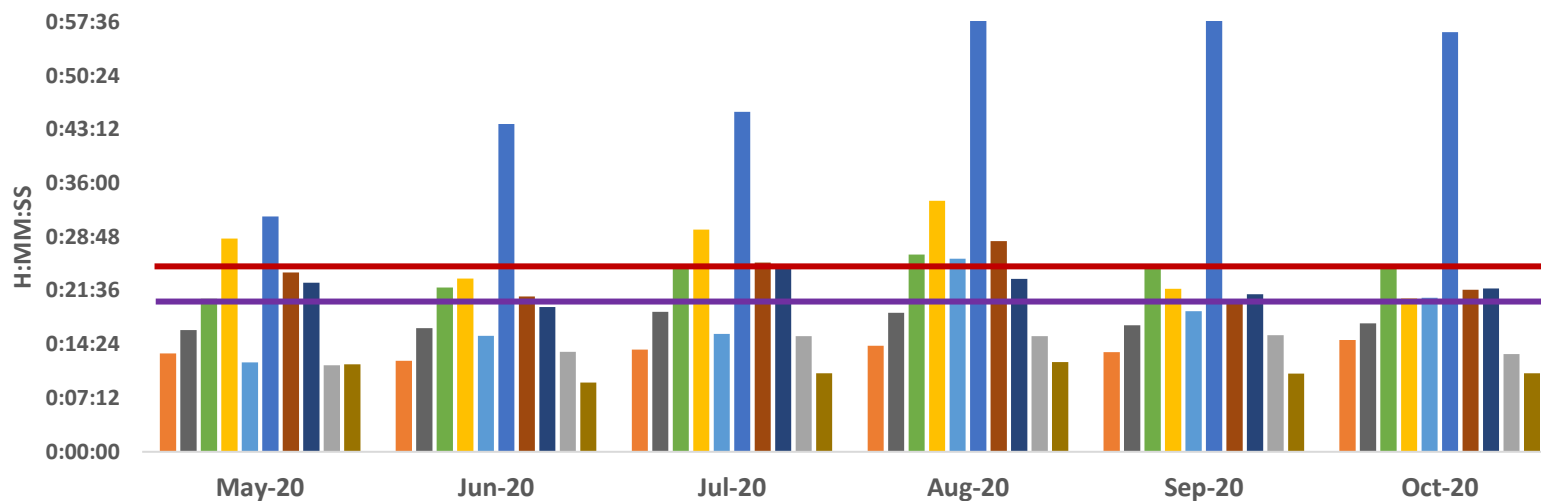
■ SHC 
 ■ ECH 
 ■ KSC 
 ■ RMC 
 ■ OCH 
 ■ VMC 
 ■ GSH 
 ■ KSJ 
 ■ SLH 
 ■ LGH

APOT 2 - September 2020

	≤ 20 minutes	21-60 minutes	61-120 minutes	121-180 minutes	>180 minutes	Total Patients
<b>SHC</b>	428 99.1%	4 0.9%	0 0.0%	0 0.0%	0 0.0%	432
<b>ECH</b>	667 96.1%	27 3.9%	0 0.0%	0 0.0%	0 0.0%	694
<b>KSC</b>	547 83.6%	102 15.6%	5 0.8%	0 0.0%	0 0.0%	654
<b>RMC</b>	1010 86.1%	114 9.7%	41 3.5%	8 0.7%	0 0.0%	1173
<b>OCH</b>	652 92.5%	52 7.4%	1 0.1%	0 0.0%	0 0.0%	705
<b>VMC</b>	872 70.3%	257 20.7%	88 7.1%	21 1.7%	3 0.2%	1241
<b>GSH</b>	653 92.5%	53 7.5%	0 0.0%	0 0.0%	0 0.0%	706
<b>KSJ</b>	615 89.9%	64 9.4%	5 0.7%	0 0.0%	0 0.0%	684
<b>SLH</b>	353 96.7%	11 3.0%	1 0.3%	0 0.0%	0 0.0%	365
<b>LGH</b>	100 100.0%	0 0.0%	0 0.0%	0 0.0%	0 0.0%	100
<b>TOTAL</b>	5897 87.3%	684 10.1%	141 2.1%	29 0.4%	3 0.0%	6754

	≤25 minutes
<b>SHC</b>	432 100.0%
<b>ECH</b>	678 97.7%
<b>KSC</b>	593 90.7%
<b>RMC</b>	1049 89.4%
<b>OCH</b>	674 95.6%
<b>VMC</b>	927 74.7%
<b>GSH</b>	680 96.3%
<b>KSJ</b>	640 93.6%
<b>SLH</b>	356 97.5%
<b>LGH</b>	100 100.0%
<b>TOTAL</b>	6129 90.7%

### Ambulance Patient Offload Time (APOT) - 90th Percentile



	May-20	Jun-20	Jul-20	Aug-20	Sep-20	Oct-20
SHC	0:13:10	0:12:11	0:13:42	0:14:14	0:13:21	0:14:59
ECH	0:16:18	0:16:34	0:18:46	0:18:38	0:16:58	0:17:13
KSC	0:20:31	0:22:00	0:25:01	0:26:27	0:25:08	0:24:33
RMC	0:28:36	0:23:14	0:29:48	0:33:38	0:21:51	0:20:33
OCH	0:11:59	0:15:33	0:15:49	0:25:54	0:18:52	0:20:39
VMC	0:31:32	0:43:55	0:45:33	1:09:55	0:59:17	0:56:14
GSH	0:24:01	0:20:50	0:25:21	0:28:15	0:19:58	0:21:44
KSJ	0:22:41	0:19:23	0:24:38	0:23:10	0:21:08	0:21:53
SLH	0:11:35	0:13:25	0:15:31	0:15:31	0:15:37	0:13:07
LGH	0:11:43	0:09:18	0:10:31	0:12:02	0:10:28	0:10:32

■ SHC 
 ■ ECH 
 ■ KSC 
 ■ RMC 
 ■ OCH 
 ■ VMC 
 ■ GSH 
 ■ KSJ 
 ■ SLH 
 ■ LGH

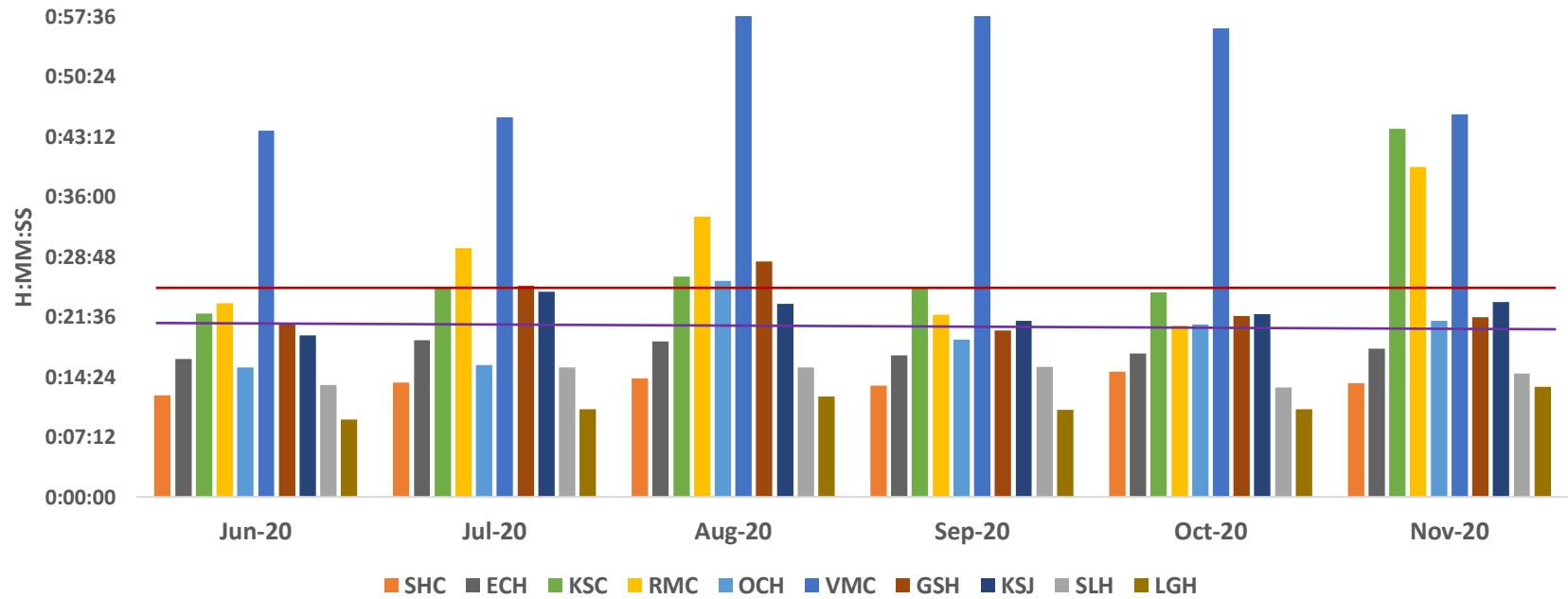
	SHC	ECH	KSC	RMC	OCH	VMC	GSH	KSJ	SLH	LGH
<b>May-20</b>	0:13:10	0:16:18	0:20:31	0:28:36	0:11:59	0:31:32	0:24:01	0:22:41	0:11:35	0:11:43
<b>Jun-20</b>	0:12:11	0:16:34	0:22:00	0:23:14	0:15:33	0:43:55	0:20:50	0:19:23	0:13:25	0:09:18
<b>Jul-20</b>	0:13:42	0:18:46	0:25:01	0:29:48	0:15:49	0:45:33	0:25:21	0:24:38	0:15:31	0:10:31
<b>Aug-20</b>	0:14:14	0:18:38	0:26:27	0:33:38	0:25:54	1:09:55	0:28:15	0:23:10	0:15:31	0:12:02
<b>Sep-20</b>	0:13:21	0:16:58	0:25:08	0:21:51	0:18:52	0:59:17	0:19:58	0:21:08	0:15:37	0:10:28
<b>Oct-20</b>	0:14:59	0:17:13	0:24:33	0:20:33	0:20:39	0:56:14	0:21:44	0:21:53	0:13:07	0:10:32

APOT 2 - October 2020

	≤ 20 minutes	21-60 minutes	61-120 minutes	121-180 minutes	>180 minutes	Total Patients
<b>SHC</b>	436 99.3%	3 0.7%	0 0.0%	0 0.0%	0 0.0%	439
<b>ECH</b>	697 95.6%	31 4.3%	1 0.1%	0 0.0%	0 0.0%	729
<b>KSC</b>	553 83.3%	109 16.4%	2 0.3%	0 0.0%	0 0.0%	664
<b>RMC</b>	1032 90.5%	95 8.3%	11 1.0%	2 0.2%	0 0.0%	1140
<b>OCH</b>	681 90.4%	71 9.4%	1 0.1%	0 0.0%	0 0.0%	753
<b>VMC</b>	925 71.6%	256 19.8%	93 7.2%	15 1.2%	2 0.2%	1291
<b>GSH</b>	663 89.1%	79 10.6%	2 0.3%	0 0.0%	0 0.0%	744
<b>KSJ</b>	556 88.7%	66 10.5%	5 0.8%	0 0.0%	0 0.0%	627
<b>SLH</b>	326 98.2%	5 1.5%	1 0.3%	0 0.0%	0 0.0%	332
<b>LGH</b>	104 100.0%	0 0.0%	0 0.0%	0 0.0%	0 0.0%	104
<b>TOTAL</b>	5973 87.5%	715 10.5%	116 1.7%	17 0.2%	2 0.0%	6823

	<25 minutes
<b>SHC</b>	438 99.8%
<b>ECH</b>	715 98.1%
<b>KSC</b>	603 90.8%
<b>RMC</b>	1072 94.0%
<b>OCH</b>	711 94.4%
<b>VMC</b>	994 77.0%
<b>GSH</b>	692 93.0%
<b>KSJ</b>	575 91.7%
<b>SLH</b>	328 98.8%
<b>LGH</b>	104 100.0%
<b>TOTAL</b>	6232 91.3%

### Ambulance Patient Offload Time (APOT) - 90th Percentile



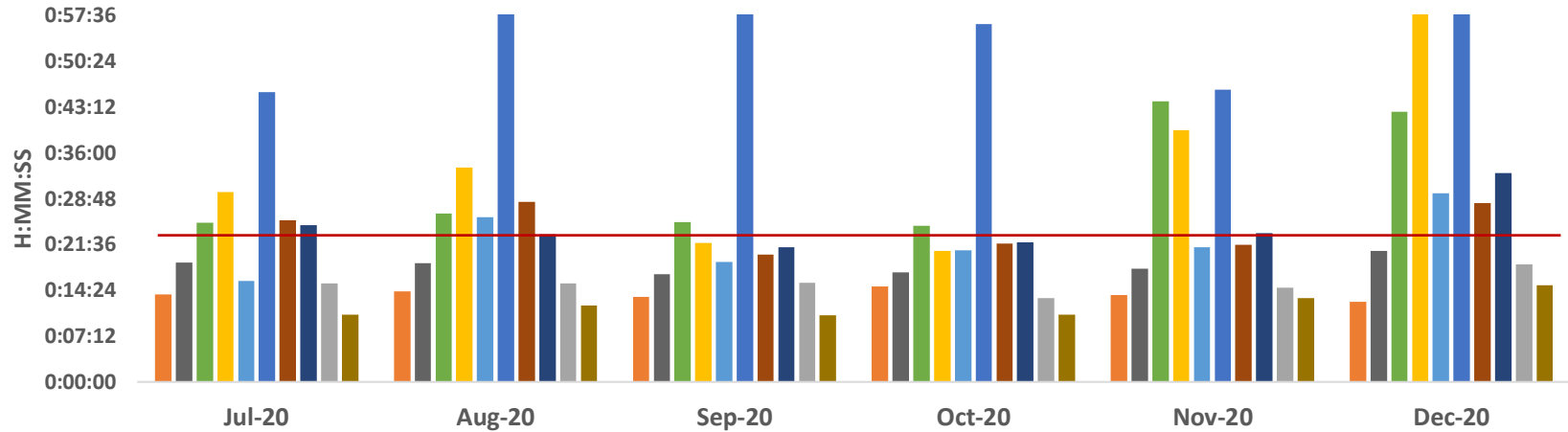
	SHC	ECH	KSC	RMC	OCH	VMC	GSH	KSJ	SLH	LGH
<b>Jun-20</b>	0:12:11	0:16:34	0:22:00	0:23:14	0:15:33	0:43:55	0:20:50	0:19:23	0:13:25	0:09:18
<b>Jul-20</b>	0:13:42	0:18:46	0:25:01	0:29:48	0:15:49	0:45:33	0:25:21	0:24:38	0:15:31	0:10:31
<b>Aug-20</b>	0:14:14	0:18:38	0:26:27	0:33:38	0:25:54	1:09:55	0:28:15	0:23:10	0:15:31	0:12:02
<b>Sep-20</b>	0:13:21	0:16:58	0:25:08	0:21:51	0:18:52	0:59:17	0:19:58	0:21:08	0:15:37	0:10:28
<b>Oct-20</b>	0:14:59	0:17:13	0:24:33	0:20:33	0:20:39	0:56:14	0:21:44	0:21:53	0:13:07	0:10:32
<b>Nov-20</b>	0:13:38	0:17:45	0:44:07	0:39:32	0:21:08	0:45:53	0:21:35	0:23:21	0:14:49	0:13:11

APOT 2 - November 2020

	≤ 20 minutes	21-60 minutes	61-120 minutes	121-180 minutes	>180 minutes	Total Patients
<b>SHC</b>	428 99.5%	2 0.5%	0 0.0%	0 0.0%	0 0.0%	430
<b>ECH</b>	630 94.5%	37 5.5%	0 0.0%	0 0.0%	0 0.0%	667
<b>KSC</b>	473 72.2%	154 23.5%	26 4.0%	2 0.3%	0 0.0%	655
<b>RMC</b>	892 80.9%	143 13.0%	51 4.6%	14 1.3%	2 0.2%	1102
<b>OCH</b>	649 89.8%	72 10.0%	2 0.3%	0 0.0%	0 0.0%	723
<b>VMC</b>	844 75.9%	193 17.4%	61 5.5%	14 1.3%	0 0.0%	1112
<b>GSH</b>	647 89.5%	74 10.2%	2 0.3%	0 0.0%	0 0.0%	723
<b>KSJ</b>	581 88.3%	73 11.1%	4 0.6%	0 0.0%	0 0.0%	658
<b>SLH</b>	285 97.3%	7 2.4%	1 0.3%	0 0.0%	0 0.0%	293
<b>LGH</b>	143 98.6%	2 1.4%	0 0.0%	0 0.0%	0 0.0%	145
<b>TOTAL</b>	5572 85.6%	757 11.6%	147 2.3%	30 0.5%	2 0.0%	6508

	≤25 minutes
<b>SHC</b>	428 99.5%
<b>ECH</b>	652 97.8%
<b>KSC</b>	516 78.8%
<b>RMC</b>	924 83.8%
<b>OCH</b>	677 93.6%
<b>VMC</b>	895 80.5%
<b>GSH</b>	678 93.8%
<b>KSJ</b>	605 91.9%
<b>SLH</b>	286 97.6%
<b>LGH</b>	145 100.0%
<b>TOTAL</b>	5806 89.2%

### Ambulance Patient Offload Time (APOT) - 90th Percentile



	Jul-20	Aug-20	Sep-20	Oct-20	Nov-20	Dec-20
SHC	0:13:42	0:14:14	0:13:21	0:14:59	0:13:38	0:12:34
ECH	0:18:46	0:18:38	0:16:58	0:17:13	0:17:45	0:20:33
KSC	0:25:01	0:26:27	0:25:08	0:24:33	0:44:07	0:42:28
RMC	0:29:48	0:33:38	0:21:51	0:20:33	0:39:32	1:29:03
OCH	0:15:49	0:25:54	0:18:52	0:20:39	0:21:08	0:29:39
VMC	0:45:33	1:09:55	0:59:17	0:56:14	0:45:53	1:21:10
GSH	0:25:21	0:28:15	0:19:58	0:21:44	0:21:35	0:28:04
KSJ	0:24:38	0:23:10	0:21:08	0:21:53	0:23:21	0:32:50
SLH	0:15:31	0:15:31	0:15:37	0:13:07	0:14:49	0:18:29
LGH	0:10:31	0:12:02	0:10:28	0:10:32	0:13:11	0:15:12

SHC ECH KSC RMC OCH VMC GSH KSJ SLH LGH

	SHC	ECH	KSC	RMC	OCH	VMC	GSH	KSJ	SLH	LGH
<b>Jul-20</b>	0:13:42	0:18:46	0:25:01	0:29:48	0:15:49	0:45:33	0:25:21	0:24:38	0:15:31	0:10:31
<b>Aug-20</b>	0:14:14	0:18:38	0:26:27	0:33:38	0:25:54	1:09:55	0:28:15	0:23:10	0:15:31	0:12:02
<b>Sep-20</b>	0:13:21	0:16:58	0:25:08	0:21:51	0:18:52	0:59:17	0:19:58	0:21:08	0:15:37	0:10:28
<b>Oct-20</b>	0:14:59	0:17:13	0:24:33	0:20:33	0:20:39	0:56:14	0:21:44	0:21:53	0:13:07	0:10:32
<b>Nov-20</b>	0:13:38	0:17:45	0:44:07	0:39:32	0:21:08	0:45:53	0:21:35	0:23:21	0:14:49	0:13:11
<b>Dec-20</b>	0:12:34	0:20:33	0:42:28	1:29:03	0:29:39	1:21:10	0:28:04	0:32:50	0:18:29	0:15:12



APOT 2 - December 2020

	≤ 20 minutes	21-60 minutes	61-120 minutes	121-180 minutes	>180 minutes	Total Patients
<b>SHC</b>	460 99.1%	4 0.9%	0 0.0%	0 0.0%	0 0.0%	464
<b>ECH</b>	753 90.8%	76 9.2%	0 0.0%	0 0.0%	0 0.0%	829
<b>KSC</b>	547 71.0%	176 22.9%	42 5.5%	5 0.6%	0 0.0%	770
<b>RMC</b>	766 70.5%	169 15.5%	81 7.5%	43 4.0%	28 2.6%	1087
<b>OCH</b>	717 79.5%	168 18.6%	14 1.6%	2 0.2%	1 0.1%	902
<b>VMC</b>	716 62.3%	253 22.0%	134 11.7%	38 3.3%	9 0.8%	1150
<b>GSH</b>	671 83.7%	110 13.7%	18 2.2%	3 0.4%	0 0.0%	802
<b>KSJ</b>	585 77.6%	150 19.9%	15 2.0%	2 0.3%	2 0.3%	754
<b>SLH</b>	333 93.0%	24 6.7%	1 0.3%	0 0.0%	0 0.0%	358
<b>LGH</b>	136 95.1%	4 2.8%	3 2.1%	0 0.0%	0 0.0%	143
<b>TOTAL</b>	5684 78.3%	1134 15.6%	308 4.2%	93 1.3%	40 0.6%	7259

	≤25 minutes
<b>SHC</b>	463 99.8%
<b>ECH</b>	786 94.8%
<b>KSC</b>	604 78.4%
<b>RMC</b>	802 73.8%
<b>OCH</b>	778 86.3%
<b>VMC</b>	777 67.6%
<b>GSH</b>	710 88.5%
<b>KSJ</b>	638 84.6%
<b>SLH</b>	340 95.0%
<b>LGH</b>	136 95.1%
<b>TOTAL</b>	6034 83.1%