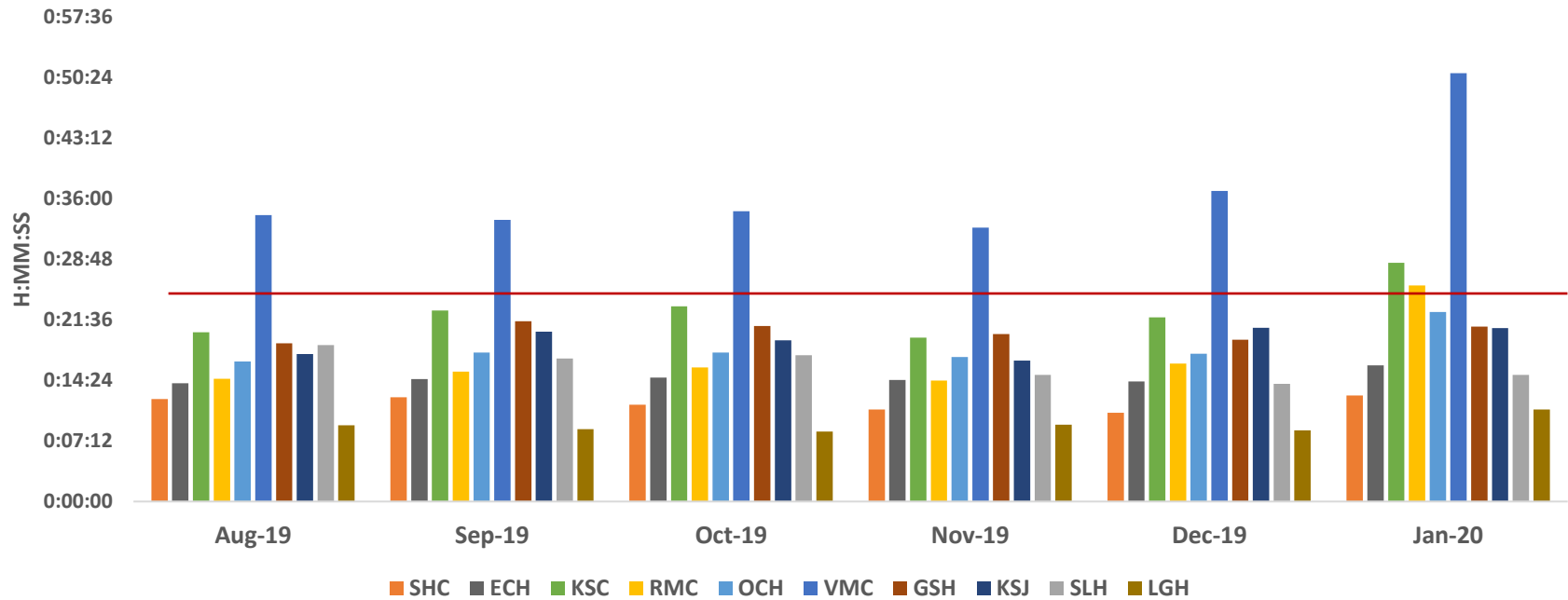


Ambulance Patient Offload Time (APOT) - 90th Percentile



	SHC	ECH	KSC	RMC	OCH	VMC	GSH	KSJ	SLH	LGH
Aug-19	0:12:11	0:14:05	0:20:08	0:14:37	0:16:40	0:34:05	0:18:50	0:17:32	0:18:36	0:09:05
Sep-19	0:12:24	0:14:34	0:22:43	0:15:27	0:17:43	0:33:30	0:21:27	0:20:12	0:17:02	0:08:37
Oct-19	0:11:30	0:14:44	0:23:14	0:15:57	0:17:43	0:34:33	0:20:54	0:19:10	0:17:24	0:08:20
Nov-19	0:10:56	0:14:28	0:19:31	0:14:24	0:17:12	0:32:35	0:19:55	0:16:47	0:15:04	0:09:09
Dec-19	0:10:34	0:14:17	0:21:55	0:16:24	0:17:36	0:36:57	0:19:16	0:20:40	0:14:01	0:08:27
Jan-20	0:12:37	0:16:11	0:28:25	0:25:43	0:22:34	0:50:57	0:20:49	0:20:38	0:15:04	0:10:56

APOT 2 - Jan 20

	≤ 20 minutes	21-60 minutes	61-120 minutes	121-180 minutes	>180 minutes	Total Patients
SHC	535 99.6%	2 0.4%	0 0.0%	0 0.0%	0 0.0%	537
ECH	735 97.5%	19 2.5%	0 0.0%	0 0.0%	0 0.0%	754
KSC	582 79.9%	144 19.8%	2 0.3%	0 0.0%	0 0.0%	728
RMC	1157 86.3%	142 10.6%	26 1.9%	14 1.0%	2 0.1%	1341
OCH	633 87.7%	87 12.0%	2 0.3%	0 0.0%	0 0.0%	722
VMC	951 70.4%	297 22.0%	80 5.9%	16 1.2%	6 0.4%	1350
GSH	713 90.1%	74 9.4%	4 0.5%	0 0.0%	0 0.0%	791
KSJ	642 90.4%	67 9.4%	1 0.1%	0 0.0%	0 0.0%	710
SLH	379 96.7%	13 3.3%	0 0.0%	0 0.0%	0 0.0%	392
LGH	120 99.2%	1 0.8%	0 0.0%	0 0.0%	0 0.0%	121
TOTAL	6447 86.6%	846 11.4%	115 1.5%	30 0.4%	8 0.1%	7446

	≤25 minutes
SHC	536 99.8%
ECH	748 99.2%
KSC	638 87.6%
RMC	1209 90.2%
OCH	668 92.5%
VMC	1024 75.9%
GSH	744 94.1%
KSJ	670 94.4%
SLH	383 97.7%
LGH	121 100.0%
TOTAL	6741 90.5%