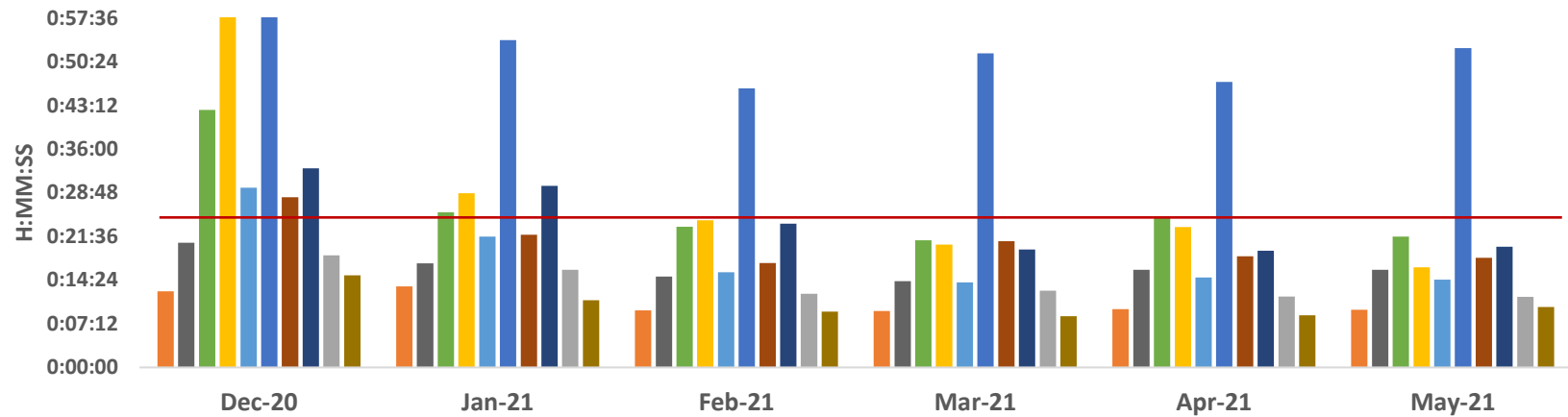


Ambulance Patient Offload Time (APOT) - 90th Percentile



	Dec-20	Jan-21	Feb-21	Mar-21	Apr-21	May-21
SHC	0:12:34	0:13:23	0:09:25	0:09:18	0:09:36	0:09:30
ECH	0:20:33	0:17:09	0:15:00	0:14:13	0:16:06	0:16:05
KSC	0:42:28	0:25:35	0:23:11	0:20:59	0:24:54	0:21:35
RMC	1:29:03	0:28:45	0:24:17	0:20:14	0:23:10	0:16:30
OCH	0:29:39	0:21:34	0:15:41	0:14:02	0:14:49	0:14:30
VMC	1:21:10	0:53:59	0:46:00	0:51:48	0:47:05	0:52:39
GSH	0:28:04	0:21:54	0:17:13	0:20:49	0:18:21	0:18:06
KSJ	0:32:50	0:29:57	0:23:42	0:19:28	0:19:14	0:19:54
SLH	0:18:29	0:16:05	0:12:09	0:12:38	0:11:41	0:11:37
LGH	0:15:12	0:11:04	0:09:13	0:08:25	0:08:36	0:09:57

SHC ECH KSC RMC OCH VMC GSH KSJ SLH LGH

	SHC	ECH	KSC	RMC	OCH	VMC	GSH	KSJ	SLH	LGH
Dec-20	0:12:34	0:20:33	0:42:28	1:29:03	0:29:39	1:21:10	0:28:04	0:32:50	0:18:29	0:15:12
Jan-21	0:13:23	0:17:09	0:25:35	0:28:45	0:21:34	0:53:59	0:21:54	0:29:57	0:16:05	0:11:04
Feb-21	0:09:25	0:15:00	0:23:11	0:24:17	0:15:41	0:46:00	0:17:13	0:23:42	0:12:09	0:09:13
Mar-21	0:09:18	0:14:13	0:20:59	0:20:14	0:14:02	0:51:48	0:20:49	0:19:28	0:12:38	0:08:25
Apr-21	0:09:36	0:16:06	0:24:54	0:23:10	0:14:49	0:47:05	0:18:21	0:19:14	0:11:41	0:08:36
May-21	0:09:30	0:16:05	0:21:35	0:16:30	0:14:30	0:52:39	0:18:06	0:19:54	0:11:37	0:09:57

APOT 2 - May 2021

	≤ 20 minutes	21-60 minutes	61-120 minutes	121-180 minutes	>180 minutes	Total Patients
SHC	504 99.6%	2 0.4%	0 0.0%	0 0.0%	0 0.0%	506
ECH	772 96.4%	29 3.6%	0 0.0%	0 0.0%	0 0.0%	801
KSC	619 88.9%	77 11.1%	0 0.0%	0 0.0%	0 0.0%	696
RMC	1089 94.3%	64 5.5%	2 0.2%	0 0.0%	0 0.0%	1155
OCH	855 98.2%	16 1.8%	0 0.0%	0 0.0%	0 0.0%	871
VMC	993 74.4%	242 18.1%	86 6.4%	13 1.0%	1 0.1%	1335
GSH	748 93.4%	52 6.5%	1 0.1%	0 0.0%	0 0.0%	801
KSJ	589 92.0%	47 7.3%	4 0.6%	0 0.0%	0 0.0%	640
SLH	292 99.7%	1 0.3%	0 0.0%	0 0.0%	0 0.0%	293
LGH	125 99.2%	1 0.8%	0 0.0%	0 0.0%	0 0.0%	126
TOTAL	6586 91.2%	531 7.4%	93 1.3%	13 0.2%	1 0.0%	7224

	≤25 minutes
SHC	505 99.8%
ECH	788 98.4%
KSC	668 96.0%
RMC	1118 96.8%
OCH	861 98.9%
VMC	1048 78.5%
GSH	772 96.4%
KSJ	608 95.0%
SLH	288 98.3%
LGH	125 99.2%
TOTAL	6781 93.9%