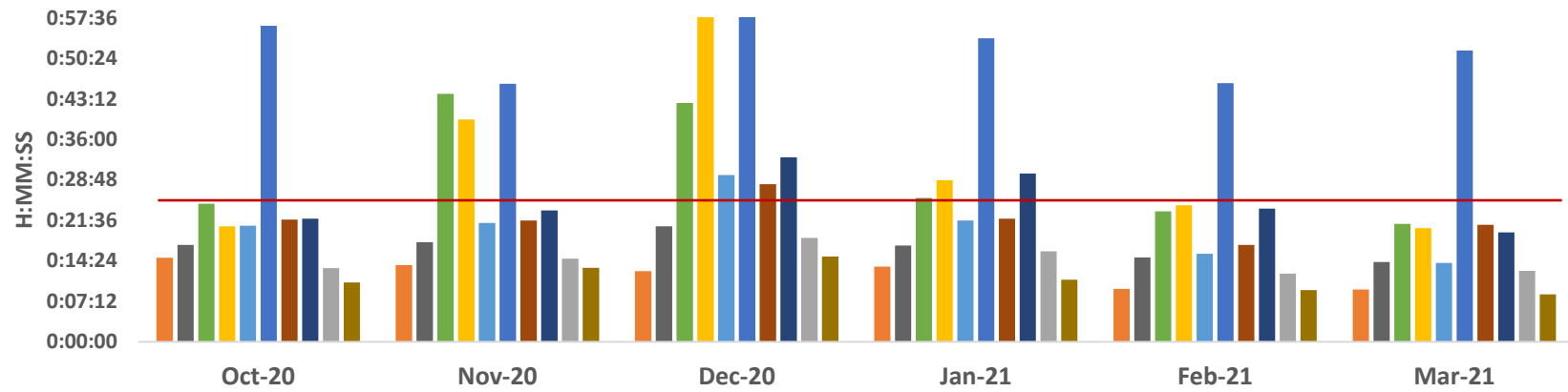


Ambulance Patient Offload Time (APOT) - 90th Percentile



	Oct-20	Nov-20	Dec-20	Jan-21	Feb-21	Mar-21
SHC	0:14:59	0:13:38	0:12:34	0:13:23	0:09:25	0:09:18
ECH	0:17:13	0:17:45	0:20:33	0:17:09	0:15:00	0:14:13
KSC	0:24:33	0:44:07	0:42:28	0:25:35	0:23:11	0:20:59
RMC	0:20:33	0:39:32	1:29:03	0:28:45	0:24:17	0:20:14
OCH	0:20:39	0:21:08	0:29:39	0:21:34	0:15:41	0:14:02
VMC	0:56:14	0:45:53	1:21:10	0:53:59	0:46:00	0:51:48
GSH	0:21:44	0:21:35	0:28:04	0:21:54	0:17:13	0:20:49
KSJ	0:21:53	0:23:21	0:32:50	0:29:57	0:23:42	0:19:28
SLH	0:13:07	0:14:49	0:18:29	0:16:05	0:12:09	0:12:38
LGH	0:10:32	0:13:11	0:15:12	0:11:04	0:09:13	0:08:25

SHC ECH KSC RMC OCH VMC GSH KSJ SLH LGH

	SHC	ECH	KSC	RMC	OCH	VMC	GSH	KSJ	SLH	LGH
Oct-20	0:14:59	0:17:13	0:24:33	0:20:33	0:20:39	0:56:14	0:21:44	0:21:53	0:13:07	0:10:32
Nov-20	0:13:38	0:17:45	0:44:07	0:39:32	0:21:08	0:45:53	0:21:35	0:23:21	0:14:49	0:13:11
Dec-20	0:12:34	0:20:33	0:42:28	1:29:03	0:29:39	1:21:10	0:28:04	0:32:50	0:18:29	0:15:12
Jan-21	0:13:23	0:17:09	0:25:35	0:28:45	0:21:34	0:53:59	0:21:54	0:29:57	0:16:05	0:11:04
Feb-21	0:09:25	0:15:00	0:23:11	0:24:17	0:15:41	0:46:00	0:17:13	0:23:42	0:12:09	0:09:13
Mar-21	0:09:18	0:14:13	0:20:59	0:20:14	0:14:02	0:51:48	0:20:49	0:19:28	0:12:38	0:08:25

APOT 2 - March 2021

	≤ 20 minutes	21-60 minutes	61-120 minutes	121-180 minutes	>180 minutes	Total Patients
SHC	461 99.1%	4 0.9%	0 0.0%	0 0.0%	0 0.0%	465
ECH	691 98.3%	12 1.7%	0 0.0%	0 0.0%	0 0.0%	703
KSC	587 89.9%	65 10.0%	1 0.2%	0 0.0%	0 0.0%	653
RMC	976 90.8%	93 8.7%	6 0.6%	0 0.0%	0 0.0%	1075
OCH	707 96.8%	23 3.2%	0 0.0%	0 0.0%	0 0.0%	730
VMC	951 72.9%	259 19.8%	90 6.9%	5 0.4%	0 0.0%	1305
GSH	665 90.1%	67 9.1%	6 0.8%	0 0.0%	0 0.0%	738
KSJ	593 92.1%	46 7.1%	5 0.8%	0 0.0%	0 0.0%	644
SLH	336 97.4%	9 2.6%	0 0.0%	0 0.0%	0 0.0%	345
LGH	118 98.3%	2 1.7%	0 0.0%	0 0.0%	0 0.0%	120
TOTAL	6085 89.8%	580 8.6%	108 1.6%	5 0.1%	0 0.0%	6778

	≤25 minutes
SHC	464 99.8%
ECH	698 99.3%
KSC	624 95.6%
RMC	1012 94.1%
OCH	718 98.4%
VMC	1010 77.4%
GSH	692 93.8%
KSJ	605 93.9%
SLH	339 98.3%
LGH	120 100.0%
TOTAL	6282 92.7%