

**County of Santa Clara
Emergency Medical Services System**

Emergency Medical Services Agency
976 Lenzen Avenue, Suite 1200
San Jose, CA 95126
408.885.4250 voice 408.885.3538 fax
www.sccemsagency.org



EMERGENCY MEDICAL SERVICES COMMITTEE

Chair: Health Advisory Commissioner Harry Hall

Thursday, March 5, 2015

1:00 pm – 3:00 pm

(Voting Members Requested to RSVP by February 20, 2015)

**Santa Clara County Sheriff's Department Auditorium
55 West Younger Avenue
San Jose, CA 95110**

All reports and supporting material are available for review on the Santa Clara County EMS Agency website at www.sccemsagency.org and in the EMS Agency's offices at least one week prior to the meeting. This information is also available the day of the meeting. (📄 Indicates supporting documentation attached. 🗳 Indicates committee action required).

- 1. Call to Order / Roll Call** 📄 (Commissioner Hall)
- 2. Introductions and Announcements** (Commissioner Hall)
- 3. Public Comment** (Staff)

This portion of the meeting is reserved for persons desiring to address the EMS Committee on a Committee-related matter not on the agenda. Speakers are limited to two (2) minutes. The law does not permit Committee action or extended discussion on any items not on the agenda except under special circumstances. Statements that require a response may be placed on the agenda for the next regular meeting of the Committee.

Regular Items (Commissioner Hall) 📄 🗳

- 4. Approval of October 2, 2014 Meeting Minutes** 📄 🗳

5. **Summary of Items Presented to Board of Supervisors or Health & Hospital Committee (Natividad)** (📄)
6. **Status of Exclusive Operating Area Request for Proposal (Blain)**
 - A. Committee Briefing and Discussion on Exclusive Operating Area Request for Proposal - Accept Verbal Report
7. **Medical Director Report – Clinical Care (Dr. Rudnick)** (📄)
8. **EMS Trust Fund (Natividad)** (📄) ✍️
 - A. Accept Written Report on the Financial Status of the EMS Trust Fund (Natividad and Petrie)
9. **Exclusive Operating Area Contract Status (Blain)**
 - A. County EOA Update
 - i. Accept Rural/Metro Response Time Performance Report (📄)
 - ii. Accept Status of Deliverables (📄)
 - B. Accept Fire Department Response Time Performance Report (📄)
 - C. Palo Alto EOA Update – Accept Verbal Report
10. **Hospital Destination, Diversion, and Advisory Status Report (Diaz)** (📄)
11. **Member Roundtable and Reports**
12. **Next Meeting and Adjourn (Commissioner Hall)**

June 4, 2015 from 1-3 pm at the Sheriff's Department Auditorium, 55 West Younger Avenue, San Jose, CA 95110

Venue and Parking Instructions

- Visitor parking is available at the County building parking lot designated "Visitor" areas.
- No food or uncapped beverages are permitted in the training room.
- This meeting will be recorded.

Emergency Medical Services Committee
 Sheriff's Department Auditorium, 55 W Younger Avenue
 October 2, 2014
 1300 to 1500 Hours

Meeting Minutes

Item	Discussion	Action
1. Call to Order/Roll Call	Chairman Harry Hall called the meeting to order at 1:04 p.m. A quorum was present.	<ul style="list-style-type: none"> Meeting called to order.
2. Introductions and Announcements		<ul style="list-style-type: none"> None
3. Public Comment	No members of the public provided comment.	<ul style="list-style-type: none"> None
Calendar Items		
4. Approval of June 5, 2014 Meeting Minutes	Without discussion, the committee approved the consent calendar. M/S/C	<ul style="list-style-type: none"> June 5, 2014 Meeting Minutes approved. M/S/C J. Coffaro/R. Hooks
5. Distribution of Revised EMS Committee Standing Rules	Michael Petrie reported that at the EMS Committee's June 5, 2014 meeting members voted to revise the Standing Rules of the EMS Committee to require only two members of the Health Commission on the EMS Committee and to allow the committee to maintain a quorum with only on Health Commissioner present. Reducing the number of Health Commissioners assigned to the EMS Committee reduced the total committee membership to 15 and changed the quorum requirement from 9 to 8. A copy of the new Standing Rules of the EMS Committee provided for members.	<ul style="list-style-type: none"> Informational Only

<p>6. Summary of Approved or Pending Board of Supervisors, and Health and Hospital Committee Items</p>	<p>Without discussion, the committee accepted the approved Board of Supervisor and Health and Hospital Committee items.</p> <p><u>Health and Hospital Approved Committee Approved Items:</u></p> <ul style="list-style-type: none"> • Emergency Medical Services (EMS) Agency Report – August 13, 2014 • Report-back on Status of Agreement with Racing Hearts – September 10, 2014 <p><u>Summary of Board of Supervisors Approved Items:</u></p> <ul style="list-style-type: none"> • Report on Improving First Responder Time Performance – June 10, 2014 • Agreement with FirstWatch – September 9, 2014 • Request for Delegation of Authority to Execute Agreement with Rural/Metro's Accountant – September 9, 2014 	<ul style="list-style-type: none"> • Informational Only <p>Summary of Approved BOS and HHC items accepted as presented.</p>
<p>7. EMS System Update</p> <p>A. Rural/Metro Contract Revision</p>	<p>Michael Petrie reported:</p> <ul style="list-style-type: none"> • On September 23, 2014, County staff presented a report to the Board of Supervisors recommending that we begin the development of an RFP for 911 Paramedic Ambulance Services in the Santa Clara County Exclusive Operating Area to potentially award a new contract, starting July 1, 2016. The Board of Supervisors unanimously voted to support County staff's recommendation. • Mr. Petrie emphasized that this action only allows the EMS Agency to develop the RFP; thus providing the County with the option of later releasing a RFP. The Board of Supervisor's action does not compel the County to release the RFP or, if it 	<ul style="list-style-type: none"> • Informational Only

releases the RFP, to execute an agreement with the bidder. Further, County staff has committed to bring the RFP back to the Board of Supervisors before it is released. This action does not negate the County's right to extend the term of the Agreement with Rural/Metro for one or two additional 3-year periods, by providing Rural/Metro no less than (60) days prior written notice. A copy of the report provided for members.

- The EMS Agency anticipates approximately that 18 months is necessary to create and release an RFP for 911 EOA paramedic ambulance services, to select the desired vendor, and to provide time for the vendor to prepare for operation.

B. San Jose Fire Department Response Time Performance

- Michael Petrie reported on the San Jose Fire Department's Code 3 response time performance between January 2012 and April 2014, based on information provided by the San Jose Fire Department.
- The report details the San Jose Fire Department's Code 3 (Red light and Siren) and Code 2 (No Red Light and Siren) response time performance between January 2014 and July 2014. The response time standard for each category is 90 percent.
- The County of Santa Clara Auditor (Harvey Rose Corporation) is continuing their management audit of the San Jose Fire Department's response time. While the EMS Agency has support that audit, we are not privy to the content or timing of the results of that audit.

- Informational Only

<p>8. Medical Director Report – Clinical Care</p>	<ul style="list-style-type: none"> • Dr. Rudnick provided reported on the Ebola Response at the EMS Agency. A meeting was held with the Public Health Officer to develop guidelines for Infectious Disease Control Measures for EMS providers which is to be sent out on Monday, October 6, 2014. 	<ul style="list-style-type: none"> • Information only.
<p>9. Exclusive Operating Area Contract Status</p> <p>A. County EOA Update –</p> <ul style="list-style-type: none"> i. Accept Rural/Metro Response Time Performance Report ii. Accept Status of Deliverables <p>B. Accept Fire Department Response Time Performance Report.</p> <p>C. Palo Alto EOA Update – Accept Verbal Report</p>	<ul style="list-style-type: none"> • John Blain provided an update on the status of Rural/Metro as the EMS System's 911 paramedic ambulance provider. The report on (September 2013 to August 2014) response time performance shows Rural Metro has been compliant in all zones and overall performance. • John Blain reported on the Fire Department Response Time Performance (July 2013 to June 2014). The audit by Harvey Rose Agency is near completion and they will provide a report to the County • No report. 	<ul style="list-style-type: none"> • Rural/Metro Response Time Performance Reported accepted as presented. M/S/C K. Horowitz/J. Coffaro • Fire Department Response Times Performance Report accepted as presented. M/S/C J. Coffaro/R. Hooks
<p>10. Hospital Destination, Diversion, and Advisory Status Report</p>	<ul style="list-style-type: none"> • Linda Diaz reported on the status of hospital destination, diversion and hospital advisory status levels for February 2014 through July 2014. • The overall volume and daily averages of patients transported within the last six months saw a small decrease. Despite the decrease, the overall hours of diversion hours have increased. There was a significant increase in stroke diversion although this was attributed to one facility with a prolonged CT issue. Trauma Center an STEMI center diversion times remained low. 	<ul style="list-style-type: none"> • Information only.

<p>11. Member Roundtable and Reports</p>	<ul style="list-style-type: none"> • Richard Kline reported that the California State Trauma Advisory Committee has sent out the State Trauma Plan for a second and final comment period. To view the plan, visit the State EMSA website: www.emsa.ca.gov/trauma. • Jo Coffaro commended the EMS Agency for their work Wall Times. The California Hospital Association will hold a meeting in late October to discuss wall times and how to work with ambulances and hospitals so everything is working well together. • The Santa Clara County EMS Agency will assist with presentation to providers as they are highlighted for their best practices. • Ms. Coffaro also reported on the State EMS Awards for 2014. The Hospital Council and the California Hospital Association have been accepted be sponsors for EMS Providers. • Michael Petrie announced the State EMS Awards Luncheon will be held in San Francisco on Wednesday, December 5, at the Marine's Memorial Hotel. 	<ul style="list-style-type: none"> • Information only
<p>12. Next Meeting</p>	<p>The next meeting will be held on December 4, 2014 from 1:00 to 3:00pm at the Sheriff's Department Auditorium.</p>	<ul style="list-style-type: none"> • As noted.
<p>13. Adjournment</p>	<p>There being no further business, the meeting was adjourned at 1:45pm</p>	<ul style="list-style-type: none"> • Meeting adjourned.

MEMBERS PRESENT

Harry Hall, Chair, Health Advisory Commission
Kenneth Horowitz, , Health Advisory Commission
Jo Coffaro, Hospital Council of Northern CA
Rick Kline, Santa Clara County Trauma Surgeons
Jose Chavez, Public Safety Sector Paramedic/EMT
Randy Hooks, Permitted Non-911 Ambulance Provider
Kralyevich, Private Service EMT/Paramedic
Elaine Nelson, South Bay Emergency Medical Directors
James Silva, Santa Clara County Medical Association
Michelle Woodfall, Santa Clara Trauma Managers

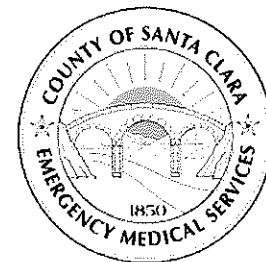
MEMBERS ABSENT

Steven Drowniary, Santa Clara County Police Chiefs
Tom Haglund, County City/County Managers
Jeff Taylor, 911 Contracted Ambulance Provider
Ginger Miramontes, Emergency Department Managers
Eric Nickel, Santa Clara County Fire Chief's Assoc

STAFF PRESENT

Michael Petrie, Director
John Blain, EMS Specialist
Lilia Felix-Villalobos, Executive Assistant
Daniel Franklin, EMS Specialist
Michael Cabano, EMS Specialist
John Montes, EMS Specialist

County of Santa Clara Emergency Medical Services System



Emergency Medical Services Agency
976 Lenzen Avenue, Suite 1200
San Jose, CA 95126
408.885.4250 voice 408.885.3538 fax
www.sccemsagency.org

Date: March 5, 2015
To: Santa Clara County EMS Committee Members
From: Patricia Natividad
Senior Management Analyst
Subject: Summary of Approved or Pending Board of Supervisors and Health and Hospital Committee Items

Health and Hospital Approved Committee Approved/Pending Board Items:

Report on the Status of EMS Agreement Negotiation with City of San Jose – December 10, 2014.

Accept report from Emergency Medical Services (EMS) Agency on status of EMS Agreement negotiation with City of San Jose.

On February 4, 2014, the Board of Supervisors directed the EMS Agency to withhold any pending or future response payments to the City of San Jose under Annex B, Category B (Response Time Performance) of the Provider Agreement until the County received a correction plan and response times improved. On February 26, 2014, the EMS Agency began a series of meetings with the City of San Jose to revise Annex B to allow the City of San Jose to continue reimbursement under Annex B, Category A and to revise Annex B consistent with the Board of Supervisors' direction and in a form that the City of San Jose was willing to execute, as the City of San Jose would not enter into any revision of Annex B with an indefinite claw back provision.

After numerous meetings between the EMS Agency, County Counsel, and City of San Jose, The County recommended a revised Annex B for approval.

This proposed revised Annex B provided the following:

- 1) The revised Annex B has a one-year life span, after which time the terms of the previous Annex B go back into effect. This provides the City of San Jose one year after executing the new Annex B to meet response time requirements.
- 2) Immediate payment of Annex B, **Category A** (EMS Resource Management) monies. Upon execution, the City will be paid the Annex B, Category A monies (which are essentially back due) and the City thereafter gets paid monthly as they become due (as if no default had occurred). This amount is currently valued at approximately \$400,000.

- 3) For Annex B, **Category B** (Response Time Performance) monies, three things occur:
- (i) After the City complies with response time requirements for 3 consecutive months, the City is paid for those 3 months.
 - (ii) After complying with response time requirements for 3 months, the City becomes eligible to collect Category B monies, as long as they comply with response time requirements for the two most recent months.
 - (iii) After the City complies with response time requirements for six consecutive months, it may recover the Annex B, Category B money held by the EMS Agency pursuant to the Board of Supervisors' direction on February 4, 2014.

Report on the Status of Request for Proposal for 911 Emergency Ambulance Service – February 11, 2015.

Receive report from the Emergency Medical Services Agency relating to the status of the development of the Request for Proposals for Countywide Exclusive Operating Area 911 Ambulance Service.

On September 23, 2014, the Board of Supervisors directed County Administration to begin the process of developing a Request for Proposals (RFP) for Countywide Exclusive Operating Area (EOA) Advanced Life Support 911 Emergency Ambulance Services. This legislative file provides a status report regarding the progress in developing that RFP.

Rural Metro has requested modifications to their contract agreement with the County to address these fiscal challenges. The County is actively working with Rural Metro to determine what modifications can and should be brought forward for Board consideration.

At this time, the County EMS Agency is proceeding with planning and RFP development with the intent of releasing the RFP in the spring of 2015. Release of the RFP at that time would allow a new agreement to be effective July 1, 2016. The EMS Agency will return to the Board with the final product for review at a future date.

The EMS Agency, working with County Counsel, County Administration, and EMS System stakeholders will develop the RFP guided by the Triple Aim of Health Care Reform: maintaining and improving quality of clinical care, reducing structural costs (including those inherent in the contract) and striving for EMS stakeholder satisfaction. The end goal of the RFP development process is to negotiate a contract that has a more balanced cost structure and provides for greater flexibility in adjusting to shifts in market and payer forces.

The EMS Agency is engaging the consulting firm of CityGate Associates to assist in the development of the RFP. CityGate Associates is anticipated to start work in early February. Their scope of work includes determining the financial characteristics of the Santa Clara County EMS System during the 10-year period contemplated in the RFP, reviewing the draft RFP for 911 Paramedic Ambulance Transportation for the Santa Clara County Exclusive Operating Area (EOA) and providing recommendations regarding the financial costs, clinical and operational benefits and value of the provisions contained within the draft RFP document. CityGate Associates will also evaluate assist in the evaluation of proposals and provide technical support throughout the RFP process.

Summary of Board of Supervisors Approved Items:

Second Amendment to Agreement with the City of San Jose for 911 Emergency Medical Services – December 16, 2014.

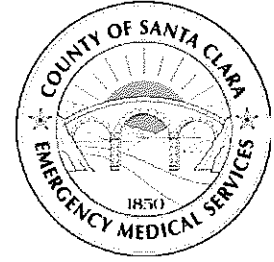
Approve Second Amendment to Agreement with the City of San Jose relating to providing 911 Emergency Medical Services, adding language to Annex B for the one-year period following execution that has been reviewed and approved by County Counsel as to form and legality.

On February 4, 2014, the Board of Supervisors directed the EMS Agency to withhold any pending or future response time payments to the City of San Jose under Annex B, Category B of the Provider Agreement until the County has (1) received from San Jose a corrective action plan acceptable to the County and (2) evidence of three consecutive months of response time compliance by the San Jose Fire Department. Once these conditions were met, the County would release all withheld payments, less any liquidated damages incurred by San Jose during the applicable period; provided, however, that a subsequent material breach due to response time performance during the term of the Agreement shall require San Jose to return any such payments. In providing these instructions, the Board also clarified that it does not intend to withhold any pending or future payments which might be due pursuant to Annex B, Category A of the Agreement.

On February 26, 2014, the EMS Agency began a series of meetings with the City of San Jose to revise Annex B to allow the City of San Jose to continue reimbursement under Annex B, Category A and to revise Annex B consistent with the Board of Supervisors' direction and in a form that the City of San Jose was willing to execute, as the City of San Jose would not enter into any revision of Annex B with an indefinite claw back provision.

The revised Annex B would have a one-year life span, after which time the terms of the previous Annex B would go back into effect. This provides the City of San Jose one year after executing the new Annex B to meet response time requirements. At its meeting on December 10, 2014, the Health and Hospital Committee requested for Public Health Department to bring the attached revised Annex B to the Board of Supervisors for consideration and approval.

**County of Santa Clara
Emergency Medical Services System**



Emergency Medical Services Agency
976 Lenzen Avenue, Suite 1200
San Jose, CA 95126
408.885.4250 voice 408.885.3538 fax
www.sccemsagency.org

Date: March 2015

To: Santa Clara County EMS Committee Members

From: Eric M. Rudnick, MD, FACEP, FAAEM
Santa Clara County EMS Agency Medical Director

Subject: **Clinical Care/Medical Directors Report**

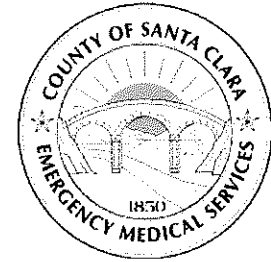
We have taken advantage of the Ebola Viral Hemorrhagic Disease epidemic to strengthen the approach to provider safety and how EMS deals with infectious diseases. The "Infectious Disease Control Measures" protocol reinforces what is good practice for providers when encountering patients who may have an infectious disease.. As the Measles outbreak continues to develop rapidly develop we are better prepared than ever before.

The Santa Clara County EMS Agency has just released the draft clinical protocols for the upcoming policy cycle. We are changing how we handle patients who may have suffered a spinal injury. In EMS there has been little science performed but decades of dogma on how to protect and transport patients who may have injured their spinal cord. We have worked closely with our Trauma Centers to ensure we continue to provide the best possible care for the citizens of Santa Clara County.

In addition, we have critically evaluated the cardiac arrest protocols (both adult and pediatric) and made changes that align us better with the American Heart Association's guidelines. The next set of clinical guidelines from the American Heart Association are expected to be published at the end of the year.

Thank you for your attention and respectfully submitted.

**County of Santa Clara
Emergency Medical Services System**



Emergency Medical Services Agency
976 Lenzen Avenue, Suite 1200
San Jose, CA 95126
408.885.4250 voice 408.885.3538 fax
www.sccemsagency.org

Date: March 5, 2015
To: Santa Clara County EMS Committee Members
From: Patricia Natividad
Senior Management Analyst
Subject: EMS Trust Fund – Liquidated Damages for Calendar Year 2014

Monthly Liquidated Damages for Response Time

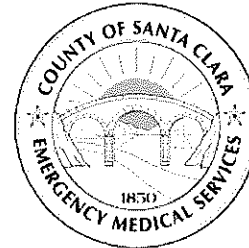
January 1, 2014 – December 31, 2014

Month / Year	Amount
January-14	\$238,750.00
February-14	\$281,000.00
March-14	\$278,280.00
April-14	\$249,000.00
May-14	\$182,500.00
June-14	\$330,500.00
July-14	\$206,750.00
August-14	\$323,500.00
September-14	\$349,000.00
October-14	\$325,500.00
November-14	\$350,500.00
December-14	\$375,500.00
Total for CY14	\$3,490,780.00
Average Monthly Total In Period	\$290,898.00

County of Santa Clara Emergency Medical Services System

Emergency Medical Services Agency

976 Lenzen Avenue, Suite 1200
San Jose, CA 95126
408.885.4250 voice 408.885.3538 fax
www.sccemsagency.org



Date: March 5, 2015
To: Santa Clara County EMS Committee Members
From: John Blain
Contract Manager
Subject: County EOA Service Area Response Time Performance Report for County Ambulance

History and Issue

The County has entered into agreements with private and public entities to provide emergency medical response and advanced life support ambulance transportation services. Periodic response time compliance reports have been provided to the EMS Committee for the purpose of providing public review of those entities' performance and compliance with contractual response time requirements. The County has performance based contracts with the following entities:

1. Rural/Metro of California (County Ambulance provider)

Context

Compliance is measured by several key performance indicators that include; response time requirements based on population density; designated response areas; type of response priority (red lights & siren or non-red lights & siren); total number of responses; total number of late responses; and total number of responses exempted (removed) from compliance calculations. Compliance is achieved when ninety (90%) percent or more of the responses meet the specified response time requirement in each response priority within each designated response area.

This report contains response time compliance data for February 2014-January 2015.

Cost

There is no direct cost to the EMS Committee to accept and/or not accept the report.

Legal Issues

There are no legal issues related to accepting and/or not accepting the report.

Options

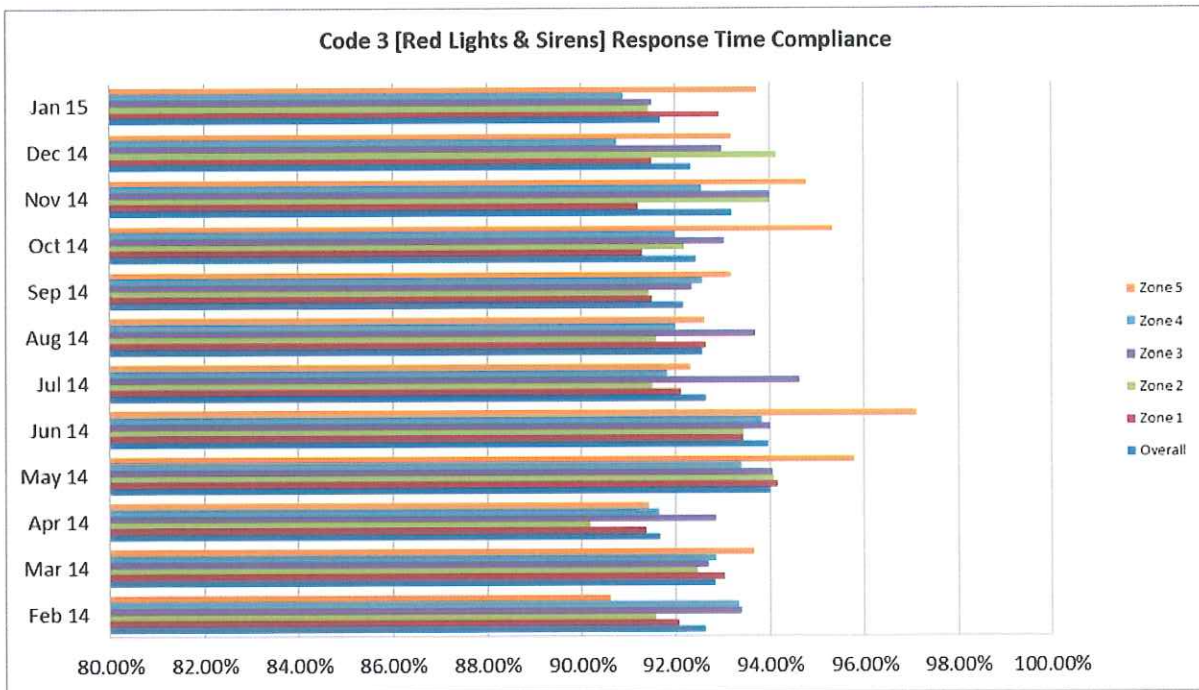
- 1) Recommend that the EMS Committee accepts the "County EOA Service Area Response Time Performance Report for February 2014-January 2015".
- 2) Recommend that the EMS Committee does not accept the "County EOA Service Area Response Time Performance Report for February 2014-January 2015".

Recommendation

- 1) Recommend that the EMS Committee accepts the "County EOA Service Area Response Time Performance Report for February 2014-January 2015".

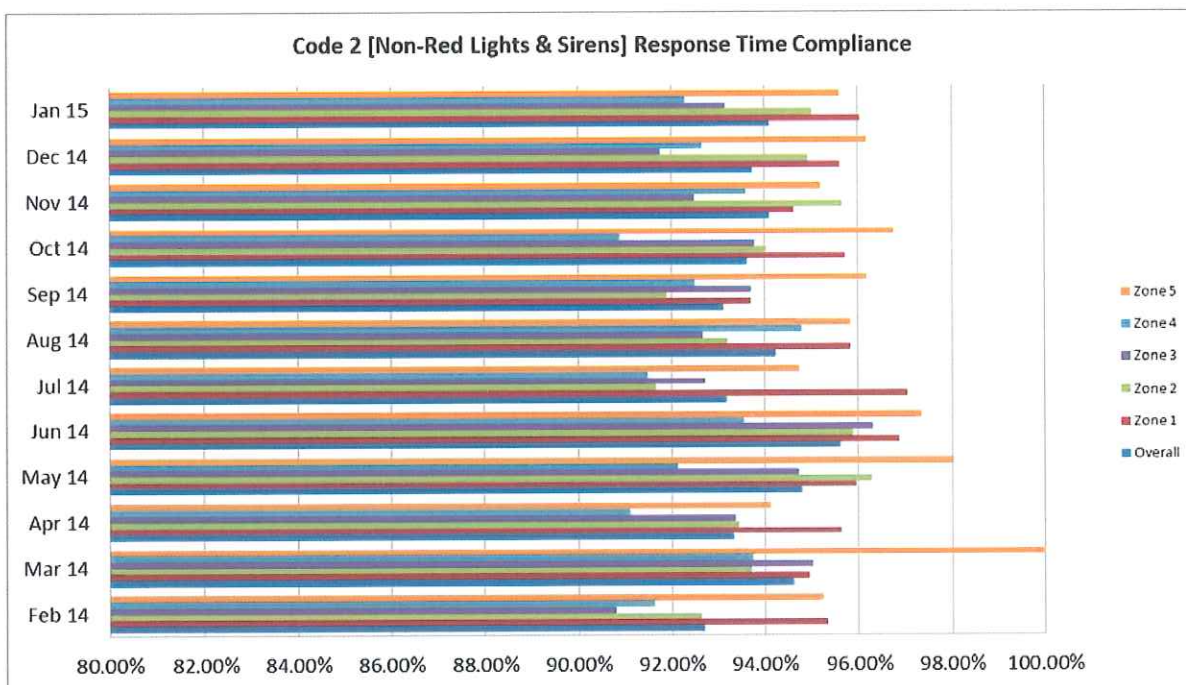
Rural/Metro

Code 3 Response	Feb 14	Mar 14	Apr 14	May 14	Jun 14	Jul 14	Aug 14	Sep 14	Oct 14	Nov 14	Dec 14	Jan 15
Overall	92.64%	92.83%	91.67%	94.03%	93.97%	92.66%	92.58%	92.17%	92.44%	93.19%	92.34%	91.69%
Zone 1	92.07%	93.03%	91.38%	94.19%	93.46%	92.12%	92.65%	91.52%	91.31%	91.21%	91.51%	92.94%
Zone 2	91.58%	92.46%	90.19%	94.09%	93.45%	91.50%	91.60%	91.44%	92.20%	94.00%	94.15%	91.45%
Zone 3	93.41%	92.69%	92.86%	94.06%	94.01%	94.63%	93.70%	92.35%	93.03%	94.02%	92.99%	91.52%
Zone 4	93.34%	92.85%	91.64%	93.40%	93.83%	91.82%	92.02%	92.59%	91.99%	92.56%	90.76%	90.89%
Zone 5	90.62%	93.68%	91.45%	95.81%	97.12%	92.33%	92.62%	93.19%	95.35%	94.79%	93.20%	93.74%

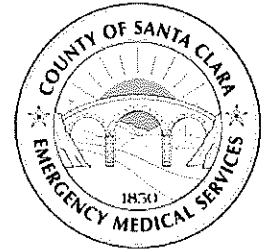


Rural/Metro

Code 2 Response	Feb 14	Mar 14	Apr 14	May 14	Jun 14	Jul 14	Aug 14	Sep 14	Oct 14	Nov 14	Dec 14	Jan 15
Overall	92.70%	94.60%	93.32%	94.79%	95.62%	93.18%	94.23%	93.11%	93.61%	94.09%	93.74%	94.09%
Zone 1	95.34%	94.95%	95.64%	95.95%	96.87%	97.06%	95.83%	93.71%	95.73%	94.63%	95.61%	96.05%
Zone 2	92.64%	93.72%	93.44%	96.27%	95.89%	91.67%	93.20%	91.91%	94.02%	95.65%	94.92%	95.01%
Zone 3	90.79%	95.02%	93.36%	94.73%	96.30%	92.72%	92.67%	93.70%	93.77%	92.49%	91.76%	93.16%
Zone 4	91.63%	93.74%	91.09%	92.13%	93.55%	91.48%	94.78%	92.49%	90.90%	93.60%	92.65%	92.28%
Zone 5	95.24%	100.00%	94.12%	98.04%	97.35%	94.74%	95.83%	96.19%	96.75%	95.19%	96.19%	95.61%



County of Santa Clara Emergency Medical Services System



Emergency Medical Services Agency
976 Lenzen Avenue, Suite 1200
San Jose, CA 95126
408.885.4250 voice 408.885.3538 fax
www.sccemsagency.org

Date: March 5, 2015
To: Santa Clara County EMS Committee Members
From: John Blain
Contract Manager
Subject: County EOA Service Area Response Time Performance Report for Fire Departments

History and Issue

The County has entered into agreements with private and public entities to provide emergency medical response and advanced life support ambulance transportation services. Periodic response time compliance reports have been provided to the EMS Committee for the purpose of providing public review of those entities' performance and compliance with contractual response time requirements. The County has performance based contracts with the following entities:

1. Gilroy, *City of*
2. Milpitas, *City of*
3. Morgan Hill, *City of*
4. Mountain View, *City of*
5. San Jose, *City of*
6. Santa Clara, *City of*
7. Santa Clara County Central Fire Protection District
8. South Santa Clara County Fire District
9. Sunnyvale, *City of*

Context

Compliance is measured by several key performance indicators that include; response time requirements based on population density; designated response areas; type of response priority (red lights & siren or non-red lights & siren); total number of responses; total number of late responses; and total number of responses exempted (removed) from compliance calculations. Compliance is achieved when ninety (90%) percent or more of the responses meet the specified response time requirement in each response priority within each designated response area.

This report contains response time compliance data for January 2014-December 2014.

Cost

There is no direct cost to the EMS Committee to accept and/or not accept the report.

Legal Issues

There are no legal issues related to accepting and/or not accepting the report.

Options

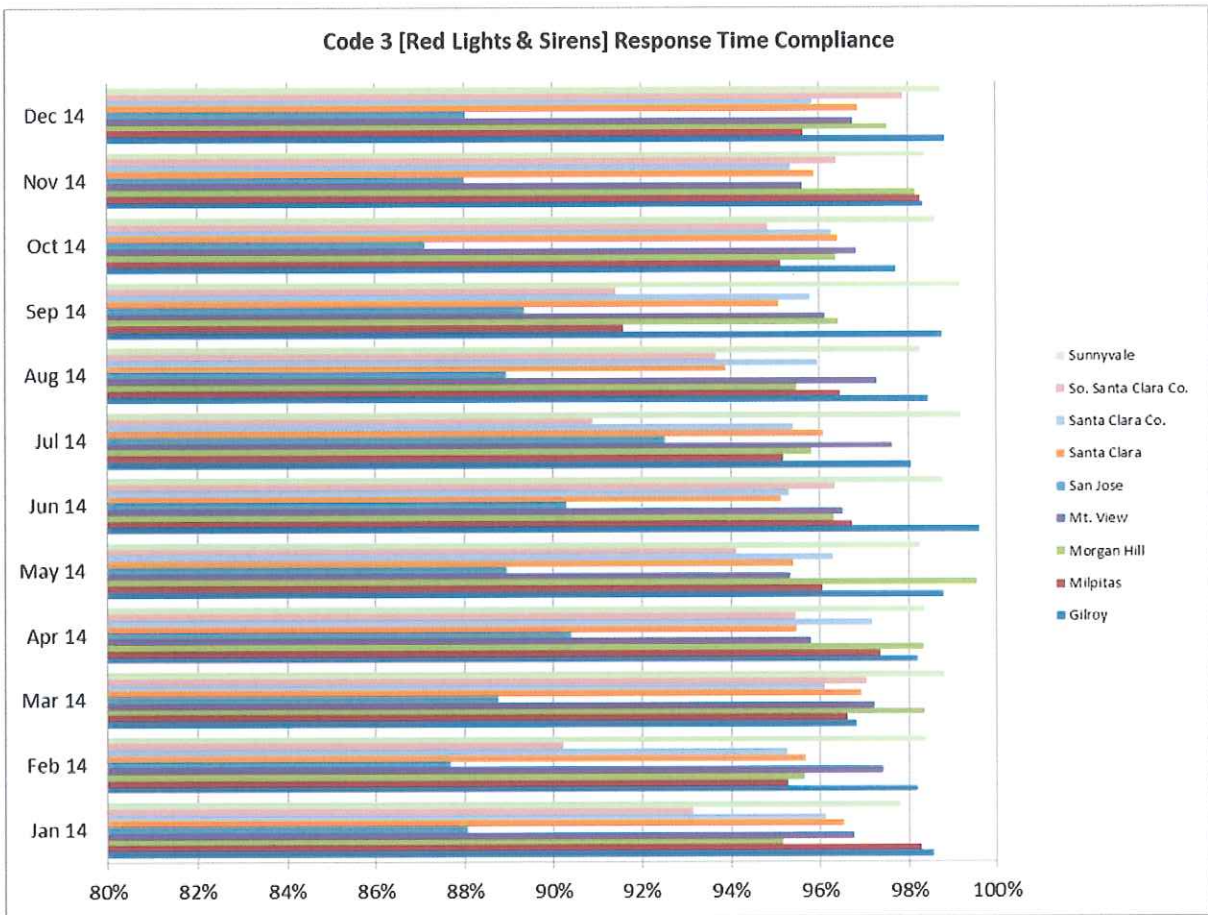
- 1) Recommend that the EMS Committee accepts the "County EOA Service Area Response Time Performance Report for January 2014-December 2014".
- 2) Recommend that the EMS Committee does not accepts the "County EOA Service Area Response Time Performance Report for January 2014-December 2014".

Recommendation

- 1) Recommend that the EMS Committee accepts the "County EOA Service Area Response Time Performance Report for January 2014-December 2014".

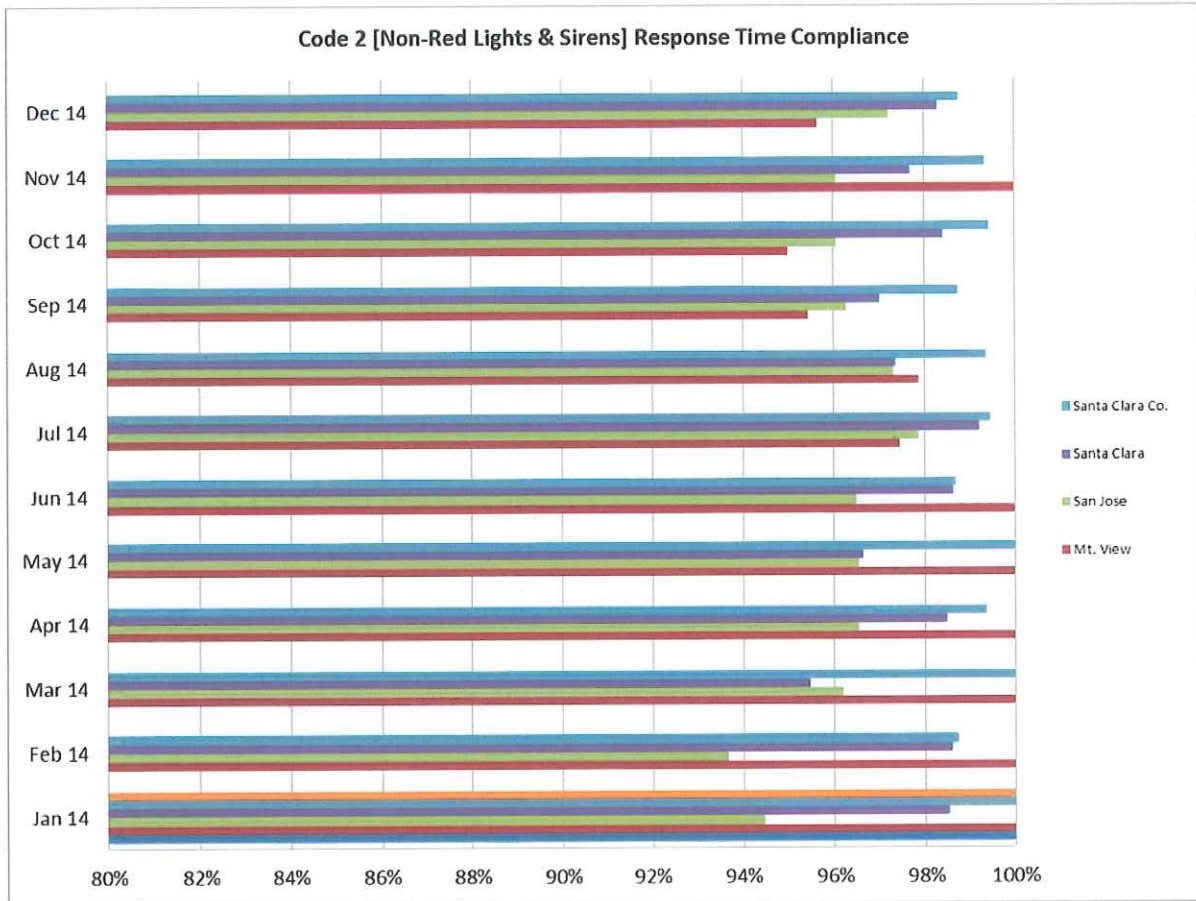
Fire Departments

Code 3 Response	Jan 14	Feb 14	Mar 14	Apr 14	May 14	Jun 14	Jul 14	Aug 14	Sep 14	Oct 14	Nov 14	Dec 14
Gilroy	98.54%	98.18%	96.79%	98.18%	98.78%	99.59%	98.05%	98.45%	98.76%	97.71%	98.33%	98.83%
Milpitas	98.27%	95.28%	96.60%	97.36%	96.04%	96.72%	95.17%	96.46%	91.61%	95.12%	98.28%	95.64%
Morgan Hill	95.16%	95.65%	98.34%	98.33%	99.54%	96.32%	95.81%	95.48%	96.41%	96.36%	98.16%	97.52%
Mt. View	96.76%	97.40%	97.20%	95.78%	95.33%	96.51%	97.61%	97.28%	96.12%	96.82%	95.61%	96.74%
San Jose	88.06%	87.66%	88.75%	90.39%	88.94%	90.31%	92.53%	88.95%	89.36%	87.12%	87.98%	88.04%
Santa Clara	96.54%	95.67%	96.91%	95.47%	95.40%	95.13%	96.07%	93.91%	95.08%	96.40%	95.87%	96.88%
Santa Clara Co.	96.12%	95.25%	96.10%	97.17%	96.30%	95.31%	95.39%	95.96%	95.78%	96.26%	95.35%	95.83%
So. Santa Clara Co.	93.15%	90.24%	97.03%	95.45%	94.12%	96.33%	90.91%	93.69%	91.43%	94.85%	96.39%	97.89%
Sunnyvale	97.78%	98.36%	98.81%	98.35%	98.25%	98.79%	99.20%	98.28%	99.16%	98.62%	98.37%	98.73%



Fire Departments

Code 2 Response	Jan 14	Feb 14	Mar 14	Apr 14	May 14	Jun 14	Jul 14	Aug 14	Sep 14	Oct 14	Nov 14	Dec 14
Mt. View	100.00%	100.00%	100.00%	100.00%	100.00%	100.00%	97.44%	97.87%	95.45%	95.00%	100.00%	95.65%
San Jose	94.46%	93.67%	96.18%	96.55%	96.55%	96.50%	97.86%	97.30%	96.29%	96.06%	96.05%	97.21%
Santa Clara	98.52%	98.58%	95.47%	98.47%	96.64%	98.62%	99.21%	97.35%	97.00%	98.40%	97.69%	98.28%
Santa Clara Co.	100.00%	98.73%	100.00%	99.37%	100.00%	98.67%	99.45%	99.35%	98.74%	99.44%	99.34%	98.75%





**County of Santa Clara
Emergency Medical Services System**

Monthly Hospital Destination, Diversion and Advisory Status Report

Report for Time Period: Dec 2014

Table 1: Number of Patients Transported to Hospital ED from 9-1-1 System*

Hospital	Jul-14	Aug-14	Sept-14	Oct-14	Nov-14	Dec-14	Total
El Camino - Los Gatos	90	82	71	99	90	79	511
El Camino - Mt. View	594	670	641	709	639	675	3928
Good Samaritan	588	589	561	607	563	704	3612
Kaiser - San Jose	513	519	535	579	538	578	3262
Kaiser - Santa Clara	597	624	587	680	613	693	3794
O'Connor	496	575	575	593	515	557	3311
Regional - San Jose	1033	1145	1094	1158	1025	1158	6613
Saint Louise	212	260	256	253	222	248	1451
Stanford	492	521	533	511	493	497	3047
VA - Palo Alto	151	79	83	75	75	81	544
VMC	1242	1264	1248	1272	1204	1288	7518
Total	6008	6328	6184	6536	5977	6558	37591

Source: Santa Clara County Communications & Palo Alto Fire Department

Table 2: Daily Average of 9-1-1 Patients Transported By Hospital*

Hospital	Jul-14	Aug-14	Sept-14	Oct-14	Nov-14	Dec-14	6 Mth Avg
El Camino - Los Gatos	3	3	2	3	3	3	3
El Camino - Mt. View	19	22	21	23	21	22	21
Good Samaritan	19	19	19	20	19	23	20
Kaiser - San Jose	17	17	18	19	18	19	18
Kaiser - Santa Clara	19	20	20	22	20	22	21
O'Connor	16	19	19	19	17	18	18
Regional - San Jose	33	37	36	37	34	37	36
Saint Louise	7	8	9	8	7	8	8
Stanford	16	17	18	16	16	16	17
VA - Palo Alto	5	3	3	2	3	3	3
VMC	40	41	42	41	40	42	41
Total Daily Average	194	206	207	210	198	213	

Source: Santa Clara County Communications & Palo Alto Fire Department

*Notes for Tables 1 and 2: These numbers only reflect patients that originated in Santa Clara County and were transported by the County's EOA Ambulance Provider and Palo Alto Fire Department. Data for Stanford does not include patients from San Mateo County. The data includes but, does not differentiate specialty center status (TRAUMA, STROKE, STEMI, BURN)

Table 3: Total Monthly Hours of "AMBULANCE DIVERSION" Status

Hospital	Jul-14	Aug-14	Sept-14	Oct-14	Nov-14	Dec-14	Total
El Camino - Los Gatos	0.00	0.00	0.00	0.00	0.00	0.00	0.00
El Camino - Mt. View	12.78	14.83	7.51	4.51	8.76	12.34	60.73
Good Samaritan	3.01	0.00	2.97	3.01	0.00	1.50	10.49
Kaiser - San Jose	6.00	10.99	13.59	9.02	13.52	41.00	94.12
Kaiser - Santa Clara	0.00	1.51	0.00	0.00	5.06	0.00	6.57
O'Connor	6.63	3.00	1.93	1.51	1.50	1.30	15.87
Regional - San Jose	3.01	1.26	0.00	0.00	1.43	0.00	5.70
Saint Louise	16.59	8.93	9.03	9.02	10.52	10.80	64.89
Stanford	9.05	4.52	7.51	10.53	4.51	18.08	54.20
VA - Palo Alto	16.15	21.04	42.29	12.01	8.57	25.00	125.06
VMC	10.35	22.24	14.89	18.05	21.90	25.37	112.80
Total	83.57	88.32	99.72	67.66	75.77	135.39	550.43
	Above 37hrs	Above 30hrs	Below 30hrs				

Color Legend for Ambulance
Diversion ONLY

Table 4: Total Monthly Hours of "STROKE / CT DOWN" Status*

Hospital	Jul-14	Aug-14	Sept-14	Oct-14	Nov-14	Dec-14	Total
El Camino - Los Gatos	0.00	0.00	0.00	0.00	0.00	0.80	0.80
El Camino - Mt. View	0.00	0.00	0.00	0.00	0.00	0.00	0.00
Good Samaritan	0.00	0.00	0.00	0.00	0.00	0.00	0.00
Kaiser - San Jose	0.53	4.27	0.00	0.00	0.00	0.00	4.80
Kaiser - Santa Clara	0.00	0.00	0.00	0.00	0.00	0.00	0.00
O'Connor	0.93	4.22	0.00	58.65	0.00	0.00	63.80
Regional - San Jose	0.00	0.00	0.00	0.00	5.96	0.00	5.96
Saint Louise	124.69	20.08	111.49	117.14	10.78	151.65	535.83
Stanford	0.00	0.00	0.00	0.00	0.00	0.00	0.00
VA - Palo Alto	0.00	0.00	105.16	0.00	0.00	0.00	105.16
VMC	0.02	0.41	1.53	0.00	1.32	0.01	3.29
Total	126.17	28.98	218.18	175.79	18.06	152.46	719.64

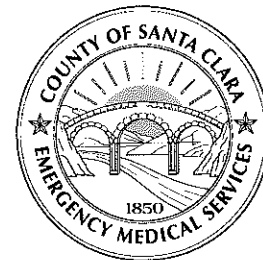
Table 5: Total Monthly Hours of "STEMI" Service Advisory Status*

Hospital	Jul-14	Aug-14	Sept-14	Oct-14	Nov-14	Dec-14	Total
El Camino - Mt. View	0.00	0.00	0.00	0.00	0.00	0.00	0.00
Good Samaritan	0.00	0.00	0.00	0.00	0.00	0.00	0.00
Kaiser - San Jose	0.00	23.68	18.81	0.00	3.00	0.00	45.49
Kaiser - Santa Clara	0.00	0.00	0.00	0.00	0.00	0.00	0.00
O'Connor	0.00	0.00	0.00	0.00	0.00	0.42	0.42
Regional - San Jose	0.00	0.00	0.00	0.00	0.00	0.00	0.00
Stanford	0.00	0.00	0.00	0.00	0.00	0.00	0.00
VMC	0.62	0.00	0.69	0.00	0.00	0.00	1.31
Total	0.62	23.68	19.50	0.00	3.00	0.42	47.22

Table 6: Total Monthly Hours of Trauma Center "BYPASS" Status

Hospital	Jul-14	Aug-14	Sept-14	Oct-14	Nov-14	Dec-14	Total
Regional - San Jose	4.02	11.52	7.45	0.96	1.09	2.92	27.96
Stanford	0.00	0.00	0.00	0.00	0.00	0.00	0.00
VMC	7.21	0.00	1.51	0.00	0.00	0.00	8.72
Total	11.23	11.52	8.96	0.96	1.09	2.92	36.68

County of Santa Clara Emergency Medical Services System



Emergency Medical Services Agency
976 Lenzen Avenue, Suite 1200
San Jose, CA 95126
408.885.4250 voice 408.885.3538 fax
www.sccemsagency.org

Date: March 5, 2014
To: Members of the EMS Committee
From: Michael Petrie
EMS Director
Subject: 2015 EMS Committee Meeting Dates

Michael Petrie will report on the 2015 EMS Committee Meeting Dates. The meetings will continue to be held at the Santa Clara County Sheriff's Department Auditorium on the following dates:

- June 4, 2015
- October 1, 2015
- December 3, 2015