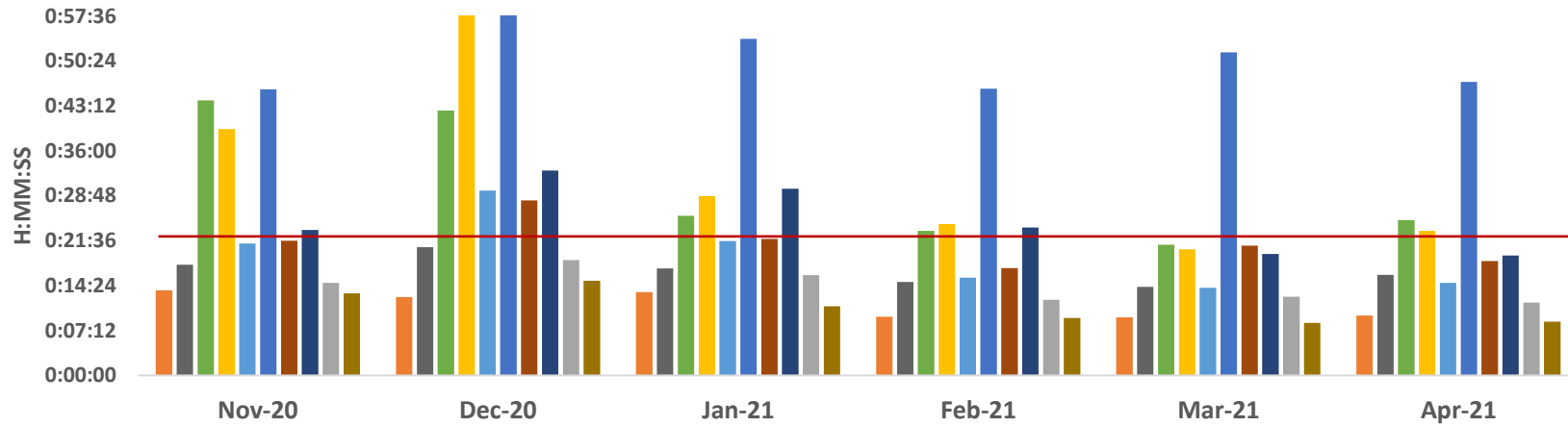


### Ambulance Patient Offload Time (APOT) - 90th Percentile



	Nov-20	Dec-20	Jan-21	Feb-21	Mar-21	Apr-21
SHC	0:13:38	0:12:34	0:13:23	0:09:25	0:09:18	0:09:36
ECH	0:17:45	0:20:33	0:17:09	0:15:00	0:14:13	0:16:06
KSC	0:44:07	0:42:28	0:25:35	0:23:11	0:20:59	0:24:54
RMC	0:39:32	1:29:03	0:28:45	0:24:17	0:20:14	0:23:10
OCH	0:21:08	0:29:39	0:21:34	0:15:41	0:14:02	0:14:49
VMC	0:45:53	1:21:10	0:53:59	0:46:00	0:51:48	0:47:05
GSH	0:21:35	0:28:04	0:21:54	0:17:13	0:20:49	0:18:21
KSJ	0:23:21	0:32:50	0:29:57	0:23:42	0:19:28	0:19:14
SLH	0:14:49	0:18:29	0:16:05	0:12:09	0:12:38	0:11:41
LGH	0:13:11	0:15:12	0:11:04	0:09:13	0:08:25	0:08:36

SHC ECH KSC RMC OCH VMC GSH KSJ SLH LGH

	SHC	ECH	KSC	RMC	OCH	VMC	GSH	KSJ	SLH	LGH
<b>Nov-20</b>	0:13:38	0:17:45	0:44:07	0:39:32	0:21:08	0:45:53	0:21:35	0:23:21	0:14:49	0:13:11
<b>Dec-20</b>	0:12:34	0:20:33	0:42:28	1:29:03	0:29:39	1:21:10	0:28:04	0:32:50	0:18:29	0:15:12
<b>Jan-21</b>	0:13:23	0:17:09	0:25:35	0:28:45	0:21:34	0:53:59	0:21:54	0:29:57	0:16:05	0:11:04
<b>Feb-21</b>	0:09:25	0:15:00	0:23:11	0:24:17	0:15:41	0:46:00	0:17:13	0:23:42	0:12:09	0:09:13
<b>Mar-21</b>	0:09:18	0:14:13	0:20:59	0:20:14	0:14:02	0:51:48	0:20:49	0:19:28	0:12:38	0:08:25
<b>Apr-21</b>	0:09:36	0:16:06	0:24:54	0:23:10	0:14:49	0:47:05	0:18:21	0:19:14	0:11:41	0:08:36

APOT 2 - April 2021

	≤ 20 minutes	21-60 minutes	61-120 minutes	121-180 minutes	>180 minutes	Total Patients
<b>SHC</b>	452 99.6%	2 0.4%	0 0.0%	0 0.0%	0 0.0%	454
<b>ECH</b>	725 96.3%	28 3.7%	0 0.0%	0 0.0%	0 0.0%	753
<b>KSC</b>	572 85.1%	96 14.3%	4 0.6%	0 0.0%	0 0.0%	672
<b>RMC</b>	913 88.6%	98 9.5%	18 1.7%	1 0.1%	0 0.0%	1030
<b>OCH</b>	747 96.0%	30 3.9%	1 0.1%	0 0.0%	0 0.0%	778
<b>VMC</b>	920 75.2%	230 18.8%	62 5.1%	10 0.8%	1 0.1%	1223
<b>GSH</b>	651 92.7%	50 7.1%	1 0.1%	0 0.0%	0 0.0%	702
<b>KSJ</b>	616 93.2%	45 6.8%	0 0.0%	0 0.0%	0 0.0%	661
<b>SLH</b>	323 97.9%	7 2.1%	0 0.0%	0 0.0%	0 0.0%	330
<b>LGH</b>	125 100.0%	0 0.0%	0 0.0%	0 0.0%	0 0.0%	125
<b>TOTAL</b>	6044 89.8%	586 8.7%	86 1.3%	11 0.2%	1 0.0%	6728

	≤25 minutes
<b>SHC</b>	453 99.8%
<b>ECH</b>	742 98.5%
<b>KSC</b>	611 90.9%
<b>RMC</b>	947 91.9%
<b>OCH</b>	765 98.3%
<b>VMC</b>	987 80.7%
<b>GSH</b>	676 96.3%
<b>KSJ</b>	639 96.7%
<b>SLH</b>	325 98.5%
<b>LGH</b>	125 100.0%
<b>TOTAL</b>	6270 93.2%