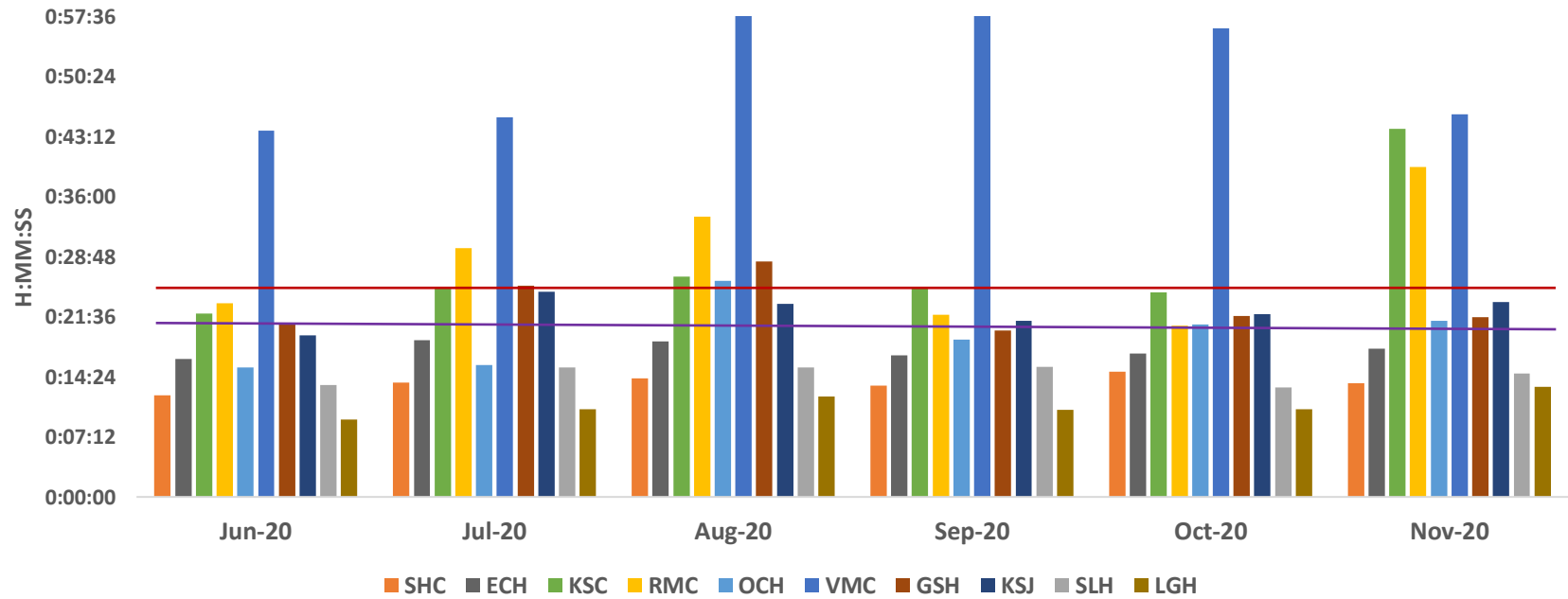


Ambulance Patient Offload Time (APOT) - 90th Percentile



	SHC	ECH	KSC	RMC	OCH	VMC	GSH	KSJ	SLH	LGH
Jun-20	0:12:11	0:16:34	0:22:00	0:23:14	0:15:33	0:43:55	0:20:50	0:19:23	0:13:25	0:09:18
Jul-20	0:13:42	0:18:46	0:25:01	0:29:48	0:15:49	0:45:33	0:25:21	0:24:38	0:15:31	0:10:31
Aug-20	0:14:14	0:18:38	0:26:27	0:33:38	0:25:54	1:09:55	0:28:15	0:23:10	0:15:31	0:12:02
Sep-20	0:13:21	0:16:58	0:25:08	0:21:51	0:18:52	0:59:17	0:19:58	0:21:08	0:15:37	0:10:28
Oct-20	0:14:59	0:17:13	0:24:33	0:20:33	0:20:39	0:56:14	0:21:44	0:21:53	0:13:07	0:10:32
Nov-20	0:13:38	0:17:45	0:44:07	0:39:32	0:21:08	0:45:53	0:21:35	0:23:21	0:14:49	0:13:11

APOT 2 - November 2020

	≤ 20 minutes	21-60 minutes	61-120 minutes	121-180 minutes	>180 minutes	Total Patients
SHC	428 99.5%	2 0.5%	0 0.0%	0 0.0%	0 0.0%	430
ECH	630 94.5%	37 5.5%	0 0.0%	0 0.0%	0 0.0%	667
KSC	473 72.2%	154 23.5%	26 4.0%	2 0.3%	0 0.0%	655
RMC	892 80.9%	143 13.0%	51 4.6%	14 1.3%	2 0.2%	1102
OCH	649 89.8%	72 10.0%	2 0.3%	0 0.0%	0 0.0%	723
VMC	844 75.9%	193 17.4%	61 5.5%	14 1.3%	0 0.0%	1112
GSH	647 89.5%	74 10.2%	2 0.3%	0 0.0%	0 0.0%	723
KSJ	581 88.3%	73 11.1%	4 0.6%	0 0.0%	0 0.0%	658
SLH	285 97.3%	7 2.4%	1 0.3%	0 0.0%	0 0.0%	293
LGH	143 98.6%	2 1.4%	0 0.0%	0 0.0%	0 0.0%	145
TOTAL	5572 85.6%	757 11.6%	147 2.3%	30 0.5%	2 0.0%	6508

	≤25 minutes
SHC	428 99.5%
ECH	652 97.8%
KSC	516 78.8%
RMC	924 83.8%
OCH	677 93.6%
VMC	895 80.5%
GSH	678 93.8%
KSJ	605 91.9%
SLH	286 97.6%
LGH	145 100.0%
TOTAL	5806 89.2%