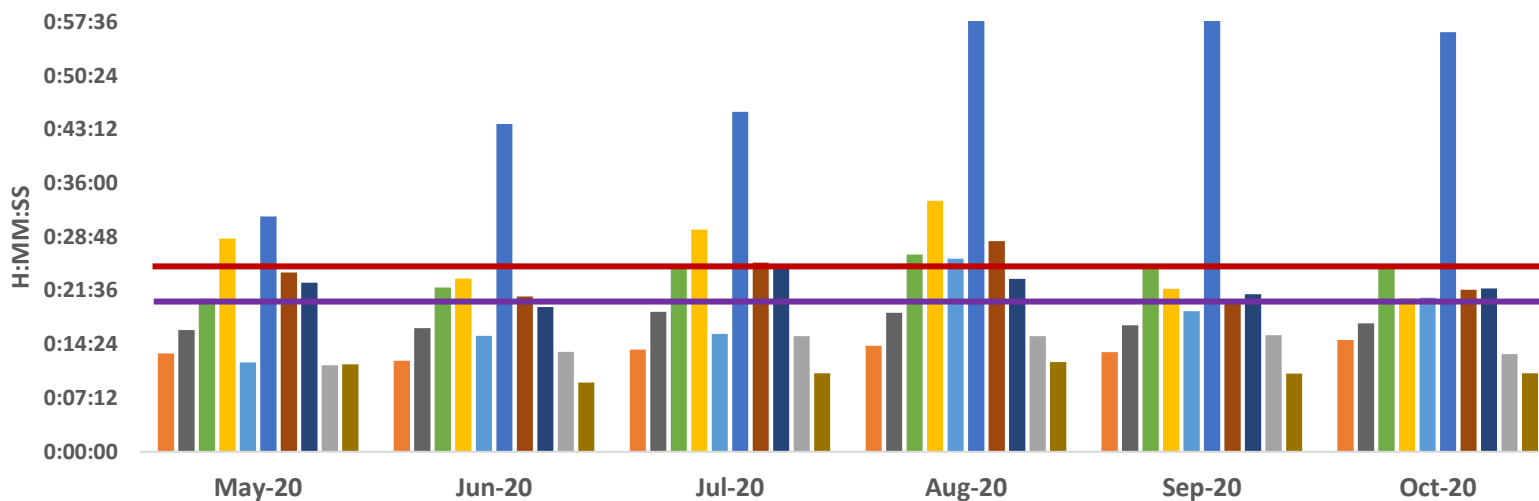


Ambulance Patient Offload Time (APOT) - 90th Percentile



	May-20	Jun-20	Jul-20	Aug-20	Sep-20	Oct-20
SHC	0:13:10	0:12:11	0:13:42	0:14:14	0:13:21	0:14:59
ECH	0:16:18	0:16:34	0:18:46	0:18:38	0:16:58	0:17:13
KSC	0:20:31	0:22:00	0:25:01	0:26:27	0:25:08	0:24:33
RMC	0:28:36	0:23:14	0:29:48	0:33:38	0:21:51	0:20:33
OCH	0:11:59	0:15:33	0:15:49	0:25:54	0:18:52	0:20:39
VMC	0:31:32	0:43:55	0:45:33	1:09:55	0:59:17	0:56:14
GSH	0:24:01	0:20:50	0:25:21	0:28:15	0:19:58	0:21:44
KSJ	0:22:41	0:19:23	0:24:38	0:23:10	0:21:08	0:21:53
SLH	0:11:35	0:13:25	0:15:31	0:15:31	0:15:37	0:13:07
LGH	0:11:43	0:09:18	0:10:31	0:12:02	0:10:28	0:10:32

■ SHC
 ■ ECH
 ■ KSC
 ■ RMC
 ■ OCH
 ■ VMC
 ■ GSH
 ■ KSJ
 ■ SLH
 ■ LGH

	SHC	ECH	KSC	RMC	OCH	VMC	GSH	KSJ	SLH	LGH
May-20	0:13:10	0:16:18	0:20:31	0:28:36	0:11:59	0:31:32	0:24:01	0:22:41	0:11:35	0:11:43
Jun-20	0:12:11	0:16:34	0:22:00	0:23:14	0:15:33	0:43:55	0:20:50	0:19:23	0:13:25	0:09:18
Jul-20	0:13:42	0:18:46	0:25:01	0:29:48	0:15:49	0:45:33	0:25:21	0:24:38	0:15:31	0:10:31
Aug-20	0:14:14	0:18:38	0:26:27	0:33:38	0:25:54	1:09:55	0:28:15	0:23:10	0:15:31	0:12:02
Sep-20	0:13:21	0:16:58	0:25:08	0:21:51	0:18:52	0:59:17	0:19:58	0:21:08	0:15:37	0:10:28
Oct-20	0:14:59	0:17:13	0:24:33	0:20:33	0:20:39	0:56:14	0:21:44	0:21:53	0:13:07	0:10:32

APOT 2 - October 2020

	≤ 20 minutes	21-60 minutes	61-120 minutes	121-180 minutes	>180 minutes	Total Patients
SHC	436 99.3%	3 0.7%	0 0.0%	0 0.0%	0 0.0%	439
ECH	697 95.6%	31 4.3%	1 0.1%	0 0.0%	0 0.0%	729
KSC	553 83.3%	109 16.4%	2 0.3%	0 0.0%	0 0.0%	664
RMC	1032 90.5%	95 8.3%	11 1.0%	2 0.2%	0 0.0%	1140
OCH	681 90.4%	71 9.4%	1 0.1%	0 0.0%	0 0.0%	753
VMC	925 71.6%	256 19.8%	93 7.2%	15 1.2%	2 0.2%	1291
GSH	663 89.1%	79 10.6%	2 0.3%	0 0.0%	0 0.0%	744
KSJ	556 88.7%	66 10.5%	5 0.8%	0 0.0%	0 0.0%	627
SLH	326 98.2%	5 1.5%	1 0.3%	0 0.0%	0 0.0%	332
LGH	104 100.0%	0 0.0%	0 0.0%	0 0.0%	0 0.0%	104
TOTAL	5973 87.5%	715 10.5%	116 1.7%	17 0.2%	2 0.0%	6823

	<25 minutes
SHC	438 99.8%
ECH	715 98.1%
KSC	603 90.8%
RMC	1072 94.0%
OCH	711 94.4%
VMC	994 77.0%
GSH	692 93.0%
KSJ	575 91.7%
SLH	328 98.8%
LGH	104 100.0%
TOTAL	6232 91.3%

