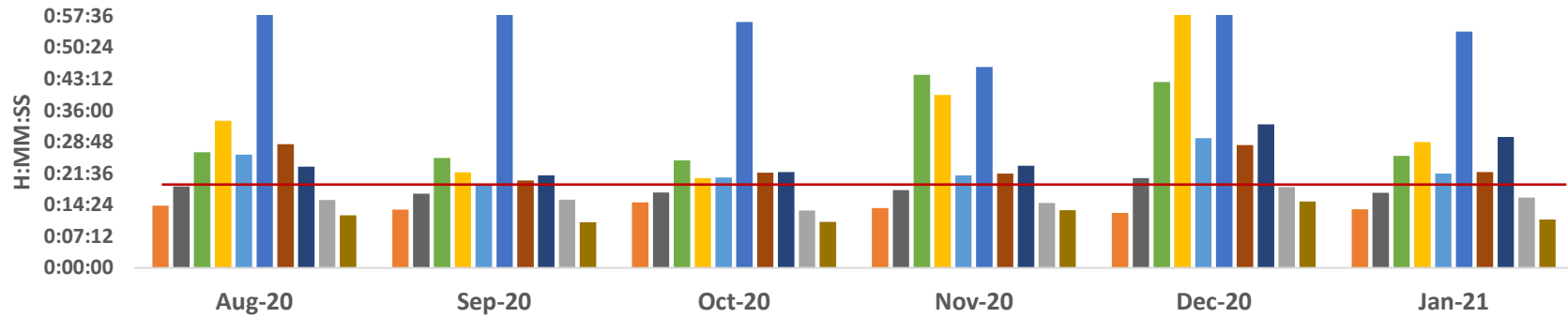


Ambulance Patient Offload Time (APOT) - 90th Percentile



	Aug-20	Sep-20	Oct-20	Nov-20	Dec-20	Jan-21
SHC	0:14:14	0:13:21	0:14:59	0:13:38	0:12:34	0:13:23
ECH	0:18:38	0:16:58	0:17:13	0:17:45	0:20:33	0:17:09
KSC	0:26:27	0:25:08	0:24:33	0:44:07	0:42:28	0:25:35
RMC	0:33:38	0:21:51	0:20:33	0:39:32	1:29:03	0:28:45
OCH	0:25:54	0:18:52	0:20:39	0:21:08	0:29:39	0:21:34
VMC	1:09:55	0:59:17	0:56:14	0:45:53	1:21:10	0:53:59
GSH	0:28:15	0:19:58	0:21:44	0:21:35	0:28:04	0:21:54
KSJ	0:23:10	0:21:08	0:21:53	0:23:21	0:32:50	0:29:57
SLH	0:15:31	0:15:37	0:13:07	0:14:49	0:18:29	0:16:05
LGH	0:12:02	0:10:28	0:10:32	0:13:11	0:15:12	0:11:04

■ SHC
 ■ ECH
 ■ KSC
 ■ RMC
 ■ OCH
 ■ VMC
 ■ GSH
 ■ KSJ
 ■ SLH
 ■ LGH

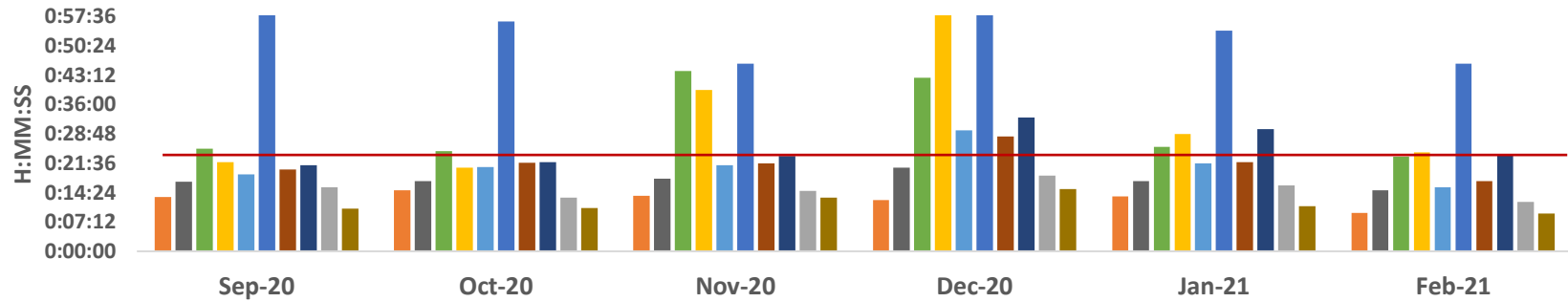
	SHC	ECH	KSC	RMC	OCH	VMC	GSH	KSJ	SLH	LGH
Aug-20	0:14:14	0:18:38	0:26:27	0:33:38	0:25:54	1:09:55	0:28:15	0:23:10	0:15:31	0:12:02
Sep-20	0:13:21	0:16:58	0:25:08	0:21:51	0:18:52	0:59:17	0:19:58	0:21:08	0:15:37	0:10:28
Oct-20	0:14:59	0:17:13	0:24:33	0:20:33	0:20:39	0:56:14	0:21:44	0:21:53	0:13:07	0:10:32
Nov-20	0:13:38	0:17:45	0:44:07	0:39:32	0:21:08	0:45:53	0:21:35	0:23:21	0:14:49	0:13:11
Dec-20	0:12:34	0:20:33	0:42:28	1:29:03	0:29:39	1:21:10	0:28:04	0:32:50	0:18:29	0:15:12
Jan-21	0:13:23	0:17:09	0:25:35	0:28:45	0:21:34	0:53:59	0:21:54	0:29:57	0:16:05	0:11:04

APOT 2 - January 2021

	≤ 20 minutes	21-60 minutes	61-120 minutes	121-180 minutes	>180 minutes	Total Patients
SHC	439 99.1%	4 0.9%	0 0.0%	0 0.0%	0 0.0%	443
ECH	692 95.8%	29 4.0%	1 0.1%	0 0.0%	0 0.0%	722
KSC	592 84.5%	96 13.7%	13 1.9%	0 0.0%	0 0.0%	701
RMC	908 85.1%	112 10.5%	31 2.9%	10 0.9%	6 0.6%	1067
OCH	848 89.0%	104 10.9%	1 0.1%	0 0.0%	0 0.0%	953
VMC	874 73.3%	218 18.3%	78 6.5%	22 1.8%	0 0.0%	1192
GSH	685 89.3%	73 9.5%	9 1.2%	0 0.0%	0 0.0%	767
KSJ	584 84.3%	85 12.3%	17 2.5%	7 1.0%	0 0.0%	693
SLH	364 95.0%	15 3.9%	4 1.0%	0 0.0%	0 0.0%	383
LGH	142 97.3%	3 2.1%	1 0.7%	0 0.0%	0 0.0%	146
TOTAL	6128 86.7%	739 10.5%	155 2.2%	39 0.6%	6 0.1%	7067

	≤25 minutes
SHC	441 99.5%
ECH	710 98.3%
KSC	634 90.4%
RMC	802 75.2%
OCH	890 93.4%
VMC	928 77.9%
GSH	715 93.2%
KSJ	638 92.1%
SLH	371 96.9%
LGH	143 97.9%
TOTAL	6272 88.8%

Ambulance Patient Offload Time (APOT) - 90th Percentile



	Sep-20	Oct-20	Nov-20	Dec-20	Jan-21	Feb-21
SHC	0:13:21	0:14:59	0:13:38	0:12:34	0:13:23	0:09:25
ECH	0:16:58	0:17:13	0:17:45	0:20:33	0:17:09	0:15:00
KSC	0:25:08	0:24:33	0:44:07	0:42:28	0:25:35	0:23:11
RMC	0:21:51	0:20:33	0:39:32	1:29:03	0:28:45	0:24:17
OCH	0:18:52	0:20:39	0:21:08	0:29:39	0:21:34	0:15:41
VMC	0:59:17	0:56:14	0:45:53	1:21:10	0:53:59	0:46:00
GSH	0:19:58	0:21:44	0:21:35	0:28:04	0:21:54	0:17:13
KSJ	0:21:08	0:21:53	0:23:21	0:32:50	0:29:57	0:23:42
SLH	0:15:37	0:13:07	0:14:49	0:18:29	0:16:05	0:12:09
LGH	0:10:28	0:10:32	0:13:11	0:15:12	0:11:04	0:09:13

■ SHC
 ■ ECH
 ■ KSC
 ■ RMC
 ■ OCH
 ■ VMC
 ■ GSH
 ■ KSJ
 ■ SLH
 ■ LGH

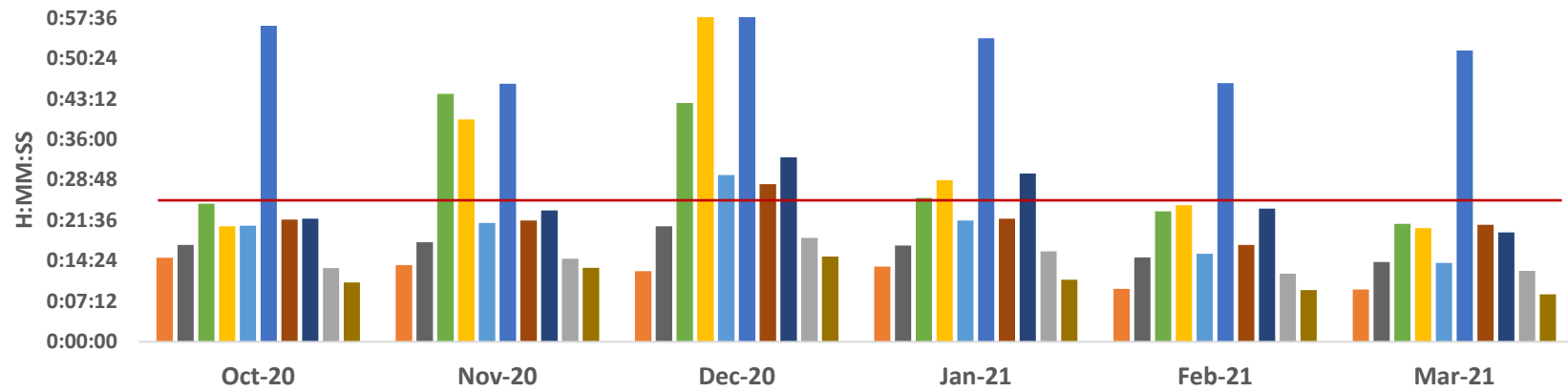
	SHC	ECH	KSC	RMC	OCH	VMC	GSH	KSJ	SLH	LGH
Sep-20	0:13:21	0:16:58	0:25:08	0:21:51	0:18:52	0:59:17	0:19:58	0:21:08	0:15:37	0:10:28
Oct-20	0:14:59	0:17:13	0:24:33	0:20:33	0:20:39	0:56:14	0:21:44	0:21:53	0:13:07	0:10:32
Nov-20	0:13:38	0:17:45	0:44:07	0:39:32	0:21:08	0:45:53	0:21:35	0:23:21	0:14:49	0:13:11
Dec-20	0:12:34	0:20:33	0:42:28	1:29:03	0:29:39	1:21:10	0:28:04	0:32:50	0:18:29	0:15:12
Jan-21	0:13:23	0:17:09	0:25:35	0:28:45	0:21:34	0:53:59	0:21:54	0:29:57	0:16:05	0:11:04
Feb-21	0:09:25	0:15:00	0:23:11	0:24:17	0:15:41	0:46:00	0:17:13	0:23:42	0:12:09	0:09:13

APOT 2 - February 2021

	≤ 20 minutes	21-60 minutes	61-120 minutes	121-180 minutes	>180 minutes	Total Patients
SHC	420 100.0%	0 0.0%	0 0.0%	0 0.0%	0 0.0%	420
ECH	695 96.9%	22 3.1%	0 0.0%	0 0.0%	0 0.0%	717
KSC	566 88.0%	72 11.2%	5 0.8%	0 0.0%	0 0.0%	643
RMC	868 88.8%	92 9.4%	12 1.2%	6 0.6%	0 0.0%	978
OCH	657 95.6%	29 4.2%	1 0.1%	0 0.0%	0 0.0%	687
VMC	837 76.8%	183 16.8%	54 5.0%	13 1.2%	3 0.3%	1090
GSH	593 94.7%	33 5.3%	0 0.0%	0 0.0%	0 0.0%	626
KSJ	524 88.4%	62 10.5%	7 1.2%	0 0.0%	0 0.0%	593
SLH	300 98.0%	6 2.0%	0 0.0%	0 0.0%	0 0.0%	306
LGH	100 100.0%	0 0.0%	0 0.0%	0 0.0%	0 0.0%	100
TOTAL	5560 90.3%	499 8.1%	79 1.3%	19 0.3%	3 0.0%	6160

	≤25 minutes
SHC	420 100.0%
ECH	705 98.3%
KSC	594 92.4%
RMC	891 91.1%
OCH	671 97.7%
VMC	894 82.0%
GSH	608 97.1%
KSJ	542 91.4%
SLH	303 99.0%
LGH	100 100.0%
TOTAL	5728 93.0%

Ambulance Patient Offload Time (APOT) - 90th Percentile



	Oct-20	Nov-20	Dec-20	Jan-21	Feb-21	Mar-21
SHC	0:14:59	0:13:38	0:12:34	0:13:23	0:09:25	0:09:18
ECH	0:17:13	0:17:45	0:20:33	0:17:09	0:15:00	0:14:13
KSC	0:24:33	0:44:07	0:42:28	0:25:35	0:23:11	0:20:59
RMC	0:20:33	0:39:32	1:29:03	0:28:45	0:24:17	0:20:14
OCH	0:20:39	0:21:08	0:29:39	0:21:34	0:15:41	0:14:02
VMC	0:56:14	0:45:53	1:21:10	0:53:59	0:46:00	0:51:48
GSH	0:21:44	0:21:35	0:28:04	0:21:54	0:17:13	0:20:49
KSJ	0:21:53	0:23:21	0:32:50	0:29:57	0:23:42	0:19:28
SLH	0:13:07	0:14:49	0:18:29	0:16:05	0:12:09	0:12:38
LGH	0:10:32	0:13:11	0:15:12	0:11:04	0:09:13	0:08:25

SHC ECH KSC RMC OCH VMC GSH KSJ SLH LGH

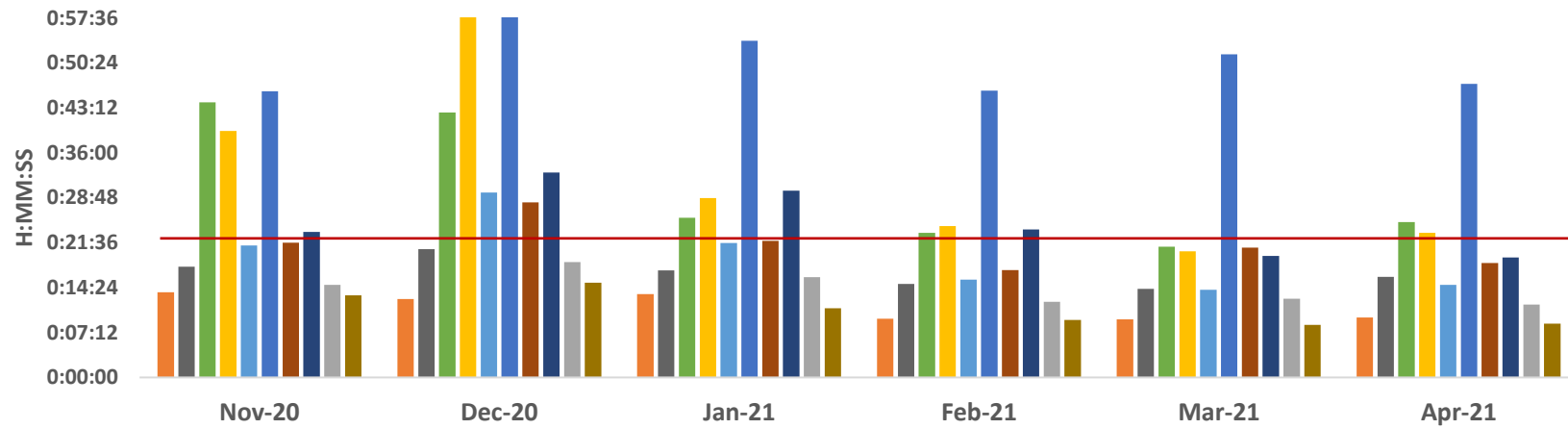
	SHC	ECH	KSC	RMC	OCH	VMC	GSH	KSJ	SLH	LGH
Oct-20	0:14:59	0:17:13	0:24:33	0:20:33	0:20:39	0:56:14	0:21:44	0:21:53	0:13:07	0:10:32
Nov-20	0:13:38	0:17:45	0:44:07	0:39:32	0:21:08	0:45:53	0:21:35	0:23:21	0:14:49	0:13:11
Dec-20	0:12:34	0:20:33	0:42:28	1:29:03	0:29:39	1:21:10	0:28:04	0:32:50	0:18:29	0:15:12
Jan-21	0:13:23	0:17:09	0:25:35	0:28:45	0:21:34	0:53:59	0:21:54	0:29:57	0:16:05	0:11:04
Feb-21	0:09:25	0:15:00	0:23:11	0:24:17	0:15:41	0:46:00	0:17:13	0:23:42	0:12:09	0:09:13
Mar-21	0:09:18	0:14:13	0:20:59	0:20:14	0:14:02	0:51:48	0:20:49	0:19:28	0:12:38	0:08:25

APOT 2 - March 2021

	≤ 20 minutes	21-60 minutes	61-120 minutes	121-180 minutes	>180 minutes	Total Patients
SHC	461 99.1%	4 0.9%	0 0.0%	0 0.0%	0 0.0%	465
ECH	691 98.3%	12 1.7%	0 0.0%	0 0.0%	0 0.0%	703
KSC	587 89.9%	65 10.0%	1 0.2%	0 0.0%	0 0.0%	653
RMC	976 90.8%	93 8.7%	6 0.6%	0 0.0%	0 0.0%	1075
OCH	707 96.8%	23 3.2%	0 0.0%	0 0.0%	0 0.0%	730
VMC	951 72.9%	259 19.8%	90 6.9%	5 0.4%	0 0.0%	1305
GSH	665 90.1%	67 9.1%	6 0.8%	0 0.0%	0 0.0%	738
KSJ	593 92.1%	46 7.1%	5 0.8%	0 0.0%	0 0.0%	644
SLH	336 97.4%	9 2.6%	0 0.0%	0 0.0%	0 0.0%	345
LGH	118 98.3%	2 1.7%	0 0.0%	0 0.0%	0 0.0%	120
TOTAL	6085 89.8%	580 8.6%	108 1.6%	5 0.1%	0 0.0%	6778

	≤25 minutes
SHC	464 99.8%
ECH	698 99.3%
KSC	624 95.6%
RMC	1012 94.1%
OCH	718 98.4%
VMC	1010 77.4%
GSH	692 93.8%
KSJ	605 93.9%
SLH	339 98.3%
LGH	120 100.0%
TOTAL	6282 92.7%

Ambulance Patient Offload Time (APOT) - 90th Percentile



	Nov-20	Dec-20	Jan-21	Feb-21	Mar-21	Apr-21
SHC	0:13:38	0:12:34	0:13:23	0:09:25	0:09:18	0:09:36
ECH	0:17:45	0:20:33	0:17:09	0:15:00	0:14:13	0:16:06
KSC	0:44:07	0:42:28	0:25:35	0:23:11	0:20:59	0:24:54
RMC	0:39:32	1:29:03	0:28:45	0:24:17	0:20:14	0:23:10
OCH	0:21:08	0:29:39	0:21:34	0:15:41	0:14:02	0:14:49
VMC	0:45:53	1:21:10	0:53:59	0:46:00	0:51:48	0:47:05
GSH	0:21:35	0:28:04	0:21:54	0:17:13	0:20:49	0:18:21
KSJ	0:23:21	0:32:50	0:29:57	0:23:42	0:19:28	0:19:14
SLH	0:14:49	0:18:29	0:16:05	0:12:09	0:12:38	0:11:41
LGH	0:13:11	0:15:12	0:11:04	0:09:13	0:08:25	0:08:36

■ SHC
 ■ ECH
 ■ KSC
 ■ RMC
 ■ OCH
 ■ VMC
 ■ GSH
 ■ KSJ
 ■ SLH
 ■ LGH

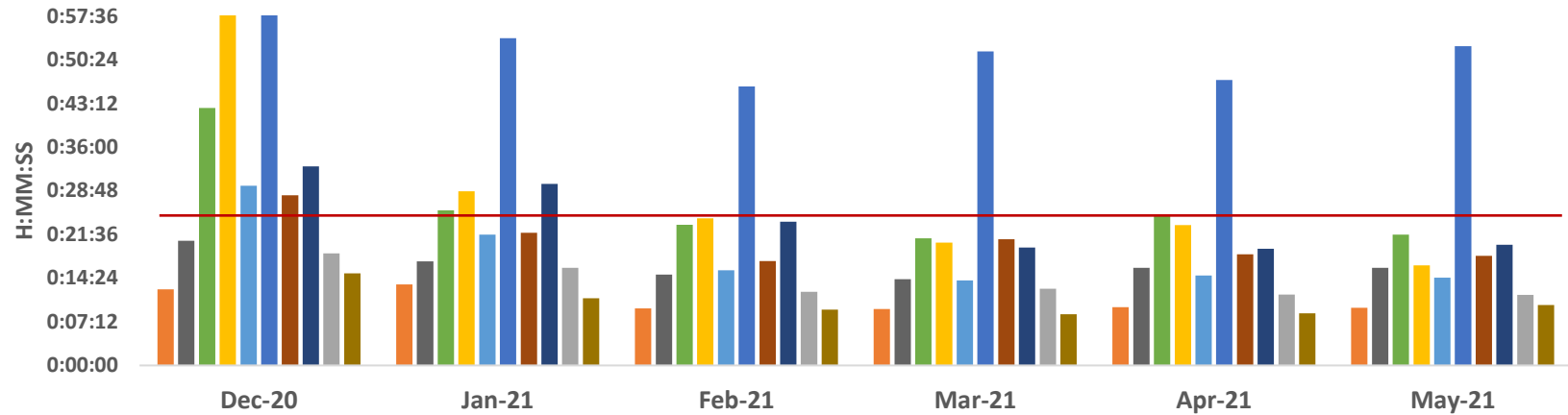
	SHC	ECH	KSC	RMC	OCH	VMC	GSH	KSJ	SLH	LGH
Nov-20	0:13:38	0:17:45	0:44:07	0:39:32	0:21:08	0:45:53	0:21:35	0:23:21	0:14:49	0:13:11
Dec-20	0:12:34	0:20:33	0:42:28	1:29:03	0:29:39	1:21:10	0:28:04	0:32:50	0:18:29	0:15:12
Jan-21	0:13:23	0:17:09	0:25:35	0:28:45	0:21:34	0:53:59	0:21:54	0:29:57	0:16:05	0:11:04
Feb-21	0:09:25	0:15:00	0:23:11	0:24:17	0:15:41	0:46:00	0:17:13	0:23:42	0:12:09	0:09:13
Mar-21	0:09:18	0:14:13	0:20:59	0:20:14	0:14:02	0:51:48	0:20:49	0:19:28	0:12:38	0:08:25
Apr-21	0:09:36	0:16:06	0:24:54	0:23:10	0:14:49	0:47:05	0:18:21	0:19:14	0:11:41	0:08:36

APOT 2 - April 2021

	≤ 20 minutes	21-60 minutes	61-120 minutes	121-180 minutes	>180 minutes	Total Patients
SHC	452 99.6%	2 0.4%	0 0.0%	0 0.0%	0 0.0%	454
ECH	725 96.3%	28 3.7%	0 0.0%	0 0.0%	0 0.0%	753
KSC	572 85.1%	96 14.3%	4 0.6%	0 0.0%	0 0.0%	672
RMC	913 88.6%	98 9.5%	18 1.7%	1 0.1%	0 0.0%	1030
OCH	747 96.0%	30 3.9%	1 0.1%	0 0.0%	0 0.0%	778
VMC	920 75.2%	230 18.8%	62 5.1%	10 0.8%	1 0.1%	1223
GSH	651 92.7%	50 7.1%	1 0.1%	0 0.0%	0 0.0%	702
KSJ	616 93.2%	45 6.8%	0 0.0%	0 0.0%	0 0.0%	661
SLH	323 97.9%	7 2.1%	0 0.0%	0 0.0%	0 0.0%	330
LGH	125 100.0%	0 0.0%	0 0.0%	0 0.0%	0 0.0%	125
TOTAL	6044 89.8%	586 8.7%	86 1.3%	11 0.2%	1 0.0%	6728

	≤25 minutes
SHC	453 99.8%
ECH	742 98.5%
KSC	611 90.9%
RMC	947 91.9%
OCH	765 98.3%
VMC	987 80.7%
GSH	676 96.3%
KSJ	639 96.7%
SLH	325 98.5%
LGH	125 100.0%
TOTAL	6270 93.2%

Ambulance Patient Offload Time (APOT) - 90th Percentile



	Dec-20	Jan-21	Feb-21	Mar-21	Apr-21	May-21
SHC	0:12:34	0:13:23	0:09:25	0:09:18	0:09:36	0:09:30
ECH	0:20:33	0:17:09	0:15:00	0:14:13	0:16:06	0:16:05
KSC	0:42:28	0:25:35	0:23:11	0:20:59	0:24:54	0:21:35
RMC	1:29:03	0:28:45	0:24:17	0:20:14	0:23:10	0:16:30
OCH	0:29:39	0:21:34	0:15:41	0:14:02	0:14:49	0:14:30
VMC	1:21:10	0:53:59	0:46:00	0:51:48	0:47:05	0:52:39
GSH	0:28:04	0:21:54	0:17:13	0:20:49	0:18:21	0:18:06
KSJ	0:32:50	0:29:57	0:23:42	0:19:28	0:19:14	0:19:54
SLH	0:18:29	0:16:05	0:12:09	0:12:38	0:11:41	0:11:37
LGH	0:15:12	0:11:04	0:09:13	0:08:25	0:08:36	0:09:57

■ SHC
 ■ ECH
 ■ KSC
 ■ RMC
 ■ OCH
 ■ VMC
 ■ GSH
 ■ KSJ
 ■ SLH
 ■ LGH

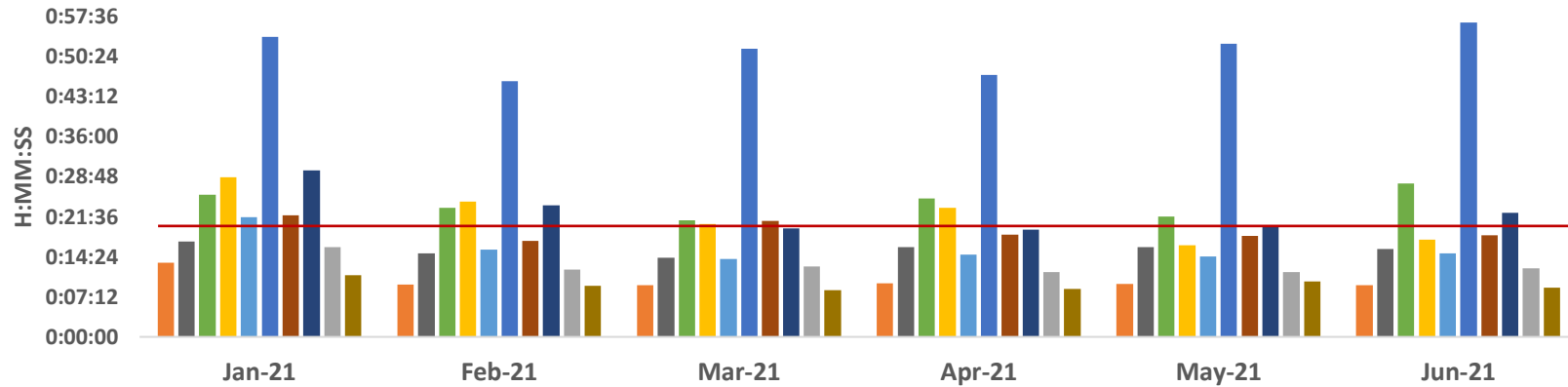
	SHC	ECH	KSC	RMC	OCH	VMC	GSH	KSJ	SLH	LGH
Dec-20	0:12:34	0:20:33	0:42:28	1:29:03	0:29:39	1:21:10	0:28:04	0:32:50	0:18:29	0:15:12
Jan-21	0:13:23	0:17:09	0:25:35	0:28:45	0:21:34	0:53:59	0:21:54	0:29:57	0:16:05	0:11:04
Feb-21	0:09:25	0:15:00	0:23:11	0:24:17	0:15:41	0:46:00	0:17:13	0:23:42	0:12:09	0:09:13
Mar-21	0:09:18	0:14:13	0:20:59	0:20:14	0:14:02	0:51:48	0:20:49	0:19:28	0:12:38	0:08:25
Apr-21	0:09:36	0:16:06	0:24:54	0:23:10	0:14:49	0:47:05	0:18:21	0:19:14	0:11:41	0:08:36
May-21	0:09:30	0:16:05	0:21:35	0:16:30	0:14:30	0:52:39	0:18:06	0:19:54	0:11:37	0:09:57

APOT 2 - May 2021

	≤ 20 minutes	21-60 minutes	61-120 minutes	121-180 minutes	>180 minutes	Total Patients
SHC	504 99.6%	2 0.4%	0 0.0%	0 0.0%	0 0.0%	506
ECH	772 96.4%	29 3.6%	0 0.0%	0 0.0%	0 0.0%	801
KSC	619 88.9%	77 11.1%	0 0.0%	0 0.0%	0 0.0%	696
RMC	1089 94.3%	64 5.5%	2 0.2%	0 0.0%	0 0.0%	1155
OCH	855 98.2%	16 1.8%	0 0.0%	0 0.0%	0 0.0%	871
VMC	993 74.4%	242 18.1%	86 6.4%	13 1.0%	1 0.1%	1335
GSH	748 93.4%	52 6.5%	1 0.1%	0 0.0%	0 0.0%	801
KSJ	589 92.0%	47 7.3%	4 0.6%	0 0.0%	0 0.0%	640
SLH	292 99.7%	1 0.3%	0 0.0%	0 0.0%	0 0.0%	293
LGH	125 99.2%	1 0.8%	0 0.0%	0 0.0%	0 0.0%	126
TOTAL	6586 91.2%	531 7.4%	93 1.3%	13 0.2%	1 0.0%	7224

	≤25 minutes
SHC	505 99.8%
ECH	788 98.4%
KSC	668 96.0%
RMC	1118 96.8%
OCH	861 98.9%
VMC	1048 78.5%
GSH	772 96.4%
KSJ	608 95.0%
SLH	288 98.3%
LGH	125 99.2%
TOTAL	6781 93.9%

Ambulance Patient Offload Time (APOT) - 90th Percentile



	Jan-21	Feb-21	Mar-21	Apr-21	May-21	Jun-21
SHC	0:13:23	0:09:25	0:09:18	0:09:36	0:09:30	0:09:17
ECH	0:17:09	0:15:00	0:14:13	0:16:06	0:16:05	0:15:50
KSC	0:25:35	0:23:11	0:20:59	0:24:54	0:21:35	0:27:35
RMC	0:28:45	0:24:17	0:20:14	0:23:10	0:16:30	0:17:26
OCH	0:21:34	0:15:41	0:14:02	0:14:49	0:14:30	0:14:59
VMC	0:53:59	0:46:00	0:51:48	0:47:05	0:52:39	0:56:29
GSH	0:21:54	0:17:13	0:20:49	0:18:21	0:18:06	0:18:14
KSJ	0:29:57	0:23:42	0:19:28	0:19:14	0:19:54	0:22:20
SLH	0:16:05	0:12:09	0:12:38	0:11:41	0:11:37	0:12:22
LGH	0:11:04	0:09:13	0:08:25	0:08:36	0:09:57	0:08:54

SHC ECH KSC RMC OCH VMC GSH KSJ SLH LGH

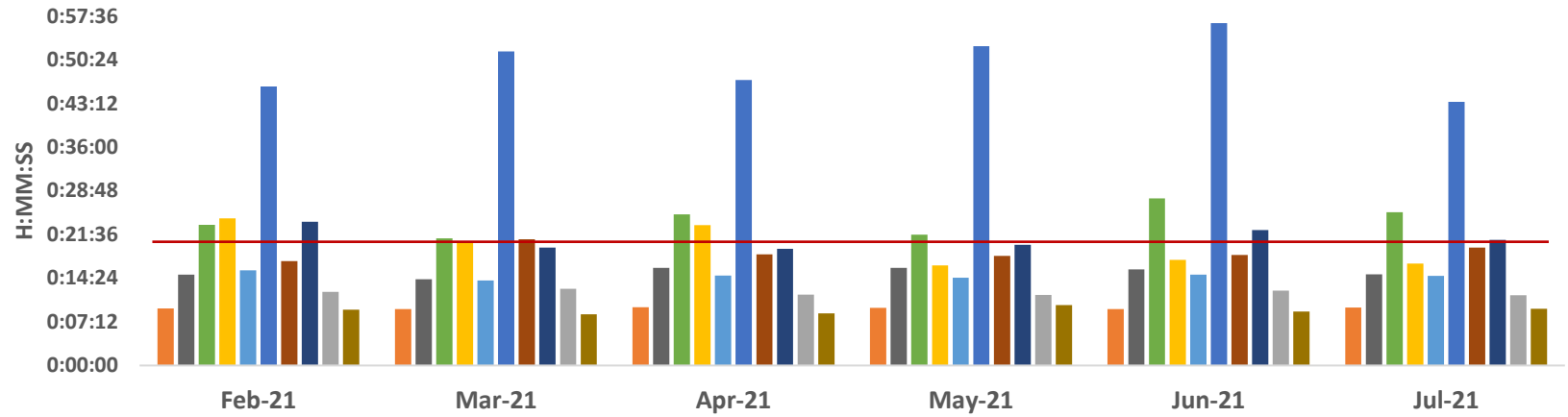
	SHC	ECH	KSC	RMC	OCH	VMC	GSH	KSJ	SLH	LGH
Jan-21	0:13:23	0:17:09	0:25:35	0:28:45	0:21:34	0:53:59	0:21:54	0:29:57	0:16:05	0:11:04
Feb-21	0:09:25	0:15:00	0:23:11	0:24:17	0:15:41	0:46:00	0:17:13	0:23:42	0:12:09	0:09:13
Mar-21	0:09:18	0:14:13	0:20:59	0:20:14	0:14:02	0:51:48	0:20:49	0:19:28	0:12:38	0:08:25
Apr-21	0:09:36	0:16:06	0:24:54	0:23:10	0:14:49	0:47:05	0:18:21	0:19:14	0:11:41	0:08:36
May-21	0:09:30	0:16:05	0:21:35	0:16:30	0:14:30	0:52:39	0:18:06	0:19:54	0:11:37	0:09:57
Jun-21	0:09:17	0:15:50	0:27:35	0:17:26	0:14:59	0:56:29	0:18:14	0:22:20	0:12:22	0:08:54

APOT 2 - June 2021

	≤ 20 minutes	21-60 minutes	61-120 minutes	121-180 minutes	>180 minutes	Total Patients
SHC	499 99.8%	1 0.2%	0 0.0%	0 0.0%	0 0.0%	500
ECH	758 96.8%	25 3.2%	0 0.0%	0 0.0%	0 0.0%	783
KSC	612 82.9%	113 15.3%	13 1.8%	0 0.0%	0 0.0%	738
RMC	1129 93.2%	73 6.0%	9 0.7%	0 0.0%	0 0.0%	1211
OCH	889 95.1%	45 4.8%	0 0.0%	1 0.1%	0 0.0%	935
VMC	880 69.6%	274 21.7%	94 7.4%	15 1.2%	1 0.1%	1264
GSH	704 92.8%	52 6.9%	3 0.4%	0 0.0%	0 0.0%	759
KSJ	640 88.5%	81 11.2%	2 0.3%	0 0.0%	0 0.0%	723
SLH	335 96.0%	14 4.0%	0 0.0%	0 0.0%	0 0.0%	349
LGH	118 98.3%	2 1.7%	0 0.0%	0 0.0%	0 0.0%	120
TOTAL	6564 88.9%	680 9.2%	121 1.6%	16 0.2%	1 0.0%	7382

	≤25 minutes
SHC	500 100.0%
ECH	771 98.5%
KSC	651 88.2%
RMC	1151 95.0%
OCH	915 97.9%
VMC	950 75.2%
GSH	726 95.7%
KSJ	665 92.0%
SLH	343 98.3%
LGH	119 99.2%
TOTAL	6791 92.0%

Ambulance Patient Offload Time (APOT) - 90th Percentile



	Feb-21	Mar-21	Apr-21	May-21	Jun-21	Jul-21
SHC	0:09:25	0:09:18	0:09:36	0:09:30	0:09:17	0:09:34
ECH	0:15:00	0:14:13	0:16:06	0:16:05	0:15:50	0:15:02
KSC	0:23:11	0:20:59	0:24:54	0:21:35	0:27:35	0:25:16
RMC	0:24:17	0:20:14	0:23:10	0:16:30	0:17:26	0:16:49
OCH	0:15:41	0:14:02	0:14:49	0:14:30	0:14:59	0:14:47
VMC	0:46:00	0:51:48	0:47:05	0:52:39	0:56:29	0:43:28
GSH	0:17:13	0:20:49	0:18:21	0:18:06	0:18:14	0:19:28
KSJ	0:23:42	0:19:28	0:19:14	0:19:54	0:22:20	0:20:42
SLH	0:12:09	0:12:38	0:11:41	0:11:37	0:12:22	0:11:35
LGH	0:09:13	0:08:25	0:08:36	0:09:57	0:08:54	0:09:21

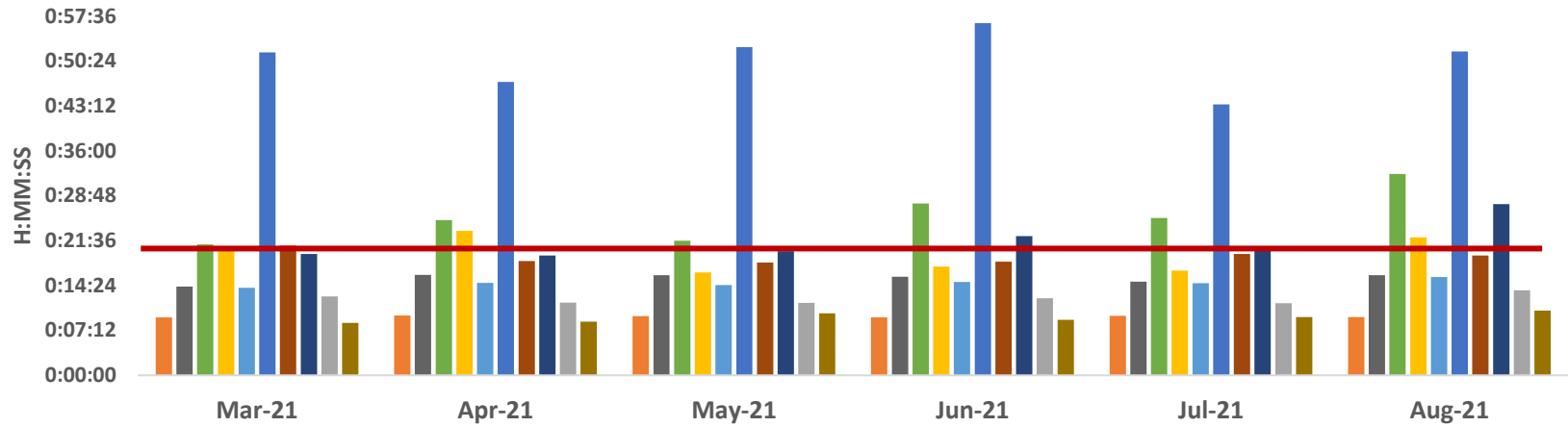
SHC ECH KSC RMC OCH VMC GSH KSJ SLH LGH

	SHC	ECH	KSC	RMC	OCH	VMC	GSH	KSJ	SLH	LGH
Feb-21	0:09:25	0:15:00	0:23:11	0:24:17	0:15:41	0:46:00	0:17:13	0:23:42	0:12:09	0:09:13
Mar-21	0:09:18	0:14:13	0:20:59	0:20:14	0:14:02	0:51:48	0:20:49	0:19:28	0:12:38	0:08:25
Apr-21	0:09:36	0:16:06	0:24:54	0:23:10	0:14:49	0:47:05	0:18:21	0:19:14	0:11:41	0:08:36
May-21	0:09:30	0:16:05	0:21:35	0:16:30	0:14:30	0:52:39	0:18:06	0:19:54	0:11:37	0:09:57
Jun-21	0:09:17	0:15:50	0:27:35	0:17:26	0:14:59	0:56:29	0:18:14	0:22:20	0:12:22	0:08:54
Jul-21	0:09:34	0:15:02	0:25:16	0:16:49	0:14:47	0:43:28	0:19:28	0:20:42	0:11:35	0:09:21

APOT 2 - July 2021

	≤ 20 minutes	21-60 minutes	61-120 minutes	121-180 minutes	>180 minutes	Total Patients
SHC	534 99.1%	4 0.7%	0 0.0%	1 0.2%	0 0.0%	539
ECH	834 98.0%	17 2.0%	0 0.0%	0 0.0%	0 0.0%	851
KSC	629 83.8%	114 15.2%	8 1.1%	0 0.0%	0 0.0%	751
RMC	1157 93.0%	77 6.2%	6 0.5%	3 0.2%	1 0.1%	1244
OCH	995 95.4%	46 4.4%	2 0.2%	0 0.0%	0 0.0%	1043
VMC	867 76.6%	200 17.7%	45 4.0%	19 1.7%	1 0.1%	1132
GSH	710 91.5%	64 8.2%	2 0.3%	0 0.0%	0 0.0%	776
KSJ	670 90.7%	69 9.3%	0 0.0%	0 0.0%	0 0.0%	739
SLH	359 98.9%	2 0.6%	2 0.6%	0 0.0%	0 0.0%	363
LGH	142 99.3%	1 0.7%	0 0.0%	0 0.0%	0 0.0%	143
TOTAL	6897 91.0%	594 7.8%	65 0.9%	23 0.3%	2 0.0%	7581

Ambulance Patient Offload Time (APOT) - 90th Percentile



	Mar-21	Apr-21	May-21	Jun-21	Jul-21	Aug-21
SHC	0:09:18	0:09:36	0:09:30	0:09:17	0:09:34	0:09:22
ECH	0:14:13	0:16:06	0:16:05	0:15:50	0:15:02	0:16:04
KSC	0:20:59	0:24:54	0:21:35	0:27:35	0:25:16	0:32:19
RMC	0:20:14	0:23:10	0:16:30	0:17:26	0:16:49	0:22:09
OCH	0:14:02	0:14:49	0:14:30	0:14:59	0:14:47	0:15:47
VMC	0:51:48	0:47:05	0:52:39	0:56:29	0:43:28	0:51:58
GSH	0:20:49	0:18:21	0:18:06	0:18:14	0:19:28	0:19:13
KSJ	0:19:28	0:19:14	0:19:54	0:22:20	0:20:42	0:27:28
SLH	0:12:38	0:11:41	0:11:37	0:12:22	0:11:35	0:13:38
LGH	0:08:25	0:08:36	0:09:57	0:08:54	0:09:21	0:10:24

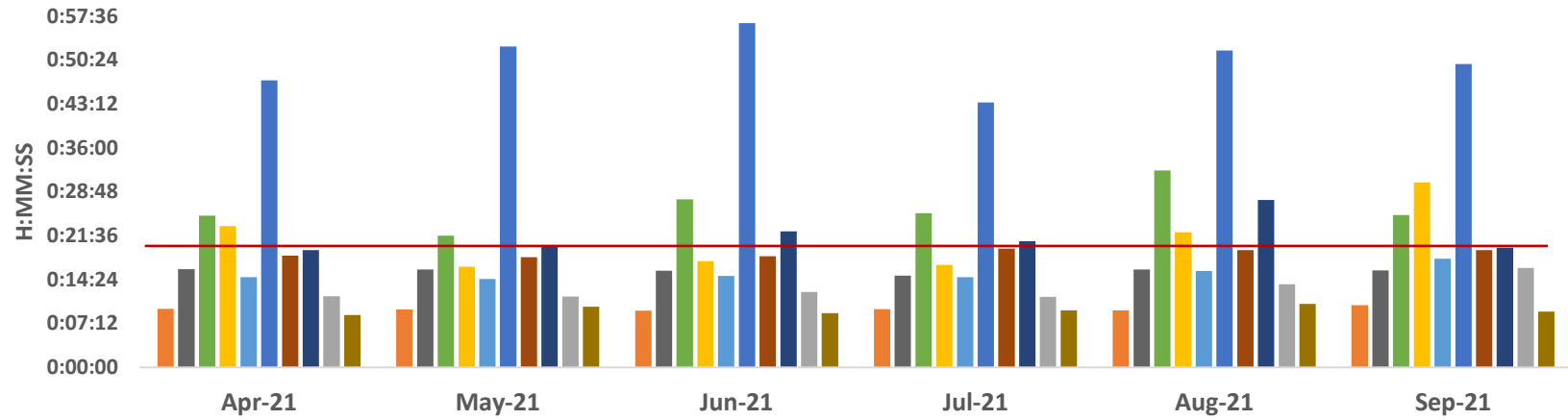
SHC ECH KSC RMC OCH VMC GSH KSJ SLH LGH

	SHC	ECH	KSC	RMC	OCH	VMC	GSH	KSJ	SLH	LGH
Mar-21	0:09:18	0:14:13	0:20:59	0:20:14	0:14:02	0:51:48	0:20:49	0:19:28	0:12:38	0:08:25
Apr-21	0:09:36	0:16:06	0:24:54	0:23:10	0:14:49	0:47:05	0:18:21	0:19:14	0:11:41	0:08:36
May-21	0:09:30	0:16:05	0:21:35	0:16:30	0:14:30	0:52:39	0:18:06	0:19:54	0:11:37	0:09:57
Jun-21	0:09:17	0:15:50	0:27:35	0:17:26	0:14:59	0:56:29	0:18:14	0:22:20	0:12:22	0:08:54
Jul-21	0:09:34	0:15:02	0:25:16	0:16:49	0:14:47	0:43:28	0:19:28	0:20:42	0:11:35	0:09:21
Aug-21	0:09:22	0:16:04	0:32:19	0:22:09	0:15:47	0:51:58	0:19:13	0:27:28	0:13:38	0:10:24

APOT 2 - Aug 2021

	≤ 20 minutes	21-60 minutes	61-120 minutes	121-180 minutes	>180 minutes	Total Patients
SHC	516 99.2%	4 0.8%	0 0.0%	0 0.0%	0 0.0%	520
ECH	837 96.0%	35 4.0%	0 0.0%	0 0.0%	0 0.0%	872
KSC	621 77.9%	164 20.6%	12 1.5%	0 0.0%	0 0.0%	797
RMC	1039 89.1%	97 8.3%	24 2.1%	5 0.4%	1 0.1%	1166
OCH	1041 95.3%	50 4.6%	1 0.1%	0 0.0%	0 0.0%	1092
VMC	835 72.6%	224 19.5%	71 6.2%	20 1.7%	0 0.0%	1150
GSH	778 91.4%	67 7.9%	6 0.7%	0 0.0%	0 0.0%	851
KSJ	610 82.4%	119 16.1%	11 1.5%	0 0.0%	0 0.0%	740
SLH	386 96.0%	15 3.7%	1 0.2%	0 0.0%	0 0.0%	402
LGH	164 98.2%	2 1.2%	1 0.6%	0 0.0%	0 0.0%	167
TOTAL	6827 88.0%	777 10.0%	127 1.6%	25 0.3%	1 0.0%	7757

Ambulance Patient Offload Time (APOT) - 90th Percentile



	Apr-21	May-21	Jun-21	Jul-21	Aug-21	Sep-21
SHC	0:09:36	0:09:30	0:09:17	0:09:34	0:09:22	0:10:12
ECH	0:16:06	0:16:05	0:15:50	0:15:02	0:16:04	0:15:54
KSC	0:24:54	0:21:35	0:27:35	0:25:16	0:32:19	0:25:00
RMC	0:23:10	0:16:30	0:17:26	0:16:49	0:22:09	0:30:20
OCH	0:14:49	0:14:30	0:14:59	0:14:47	0:15:47	0:17:50
VMC	0:47:05	0:52:39	0:56:29	0:43:28	0:51:58	0:49:47
GSH	0:18:21	0:18:06	0:18:14	0:19:28	0:19:13	0:19:15
KSJ	0:19:14	0:19:54	0:22:20	0:20:42	0:27:28	0:19:39
SLH	0:11:41	0:11:37	0:12:22	0:11:35	0:13:38	0:16:19
LGH	0:08:36	0:09:57	0:08:54	0:09:21	0:10:24	0:09:08

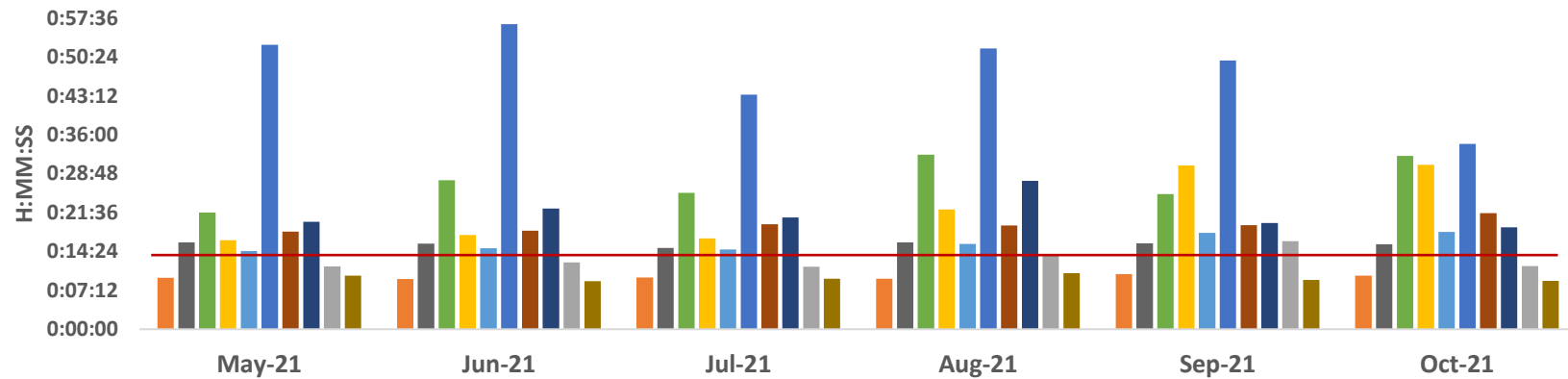
■ SHC
 ■ ECH
 ■ KSC
 ■ RMC
 ■ OCH
 ■ VMC
 ■ GSH
 ■ KSJ
 ■ SLH
 ■ LGH

	SHC	ECH	KSC	RMC	OCH	VMC	GSH	KSJ	SLH	LGH
Apr-21	0:09:36	0:16:06	0:24:54	0:23:10	0:14:49	0:47:05	0:18:21	0:19:14	0:11:41	0:08:36
May-21	0:09:30	0:16:05	0:21:35	0:16:30	0:14:30	0:52:39	0:18:06	0:19:54	0:11:37	0:09:57
Jun-21	0:09:17	0:15:50	0:27:35	0:17:26	0:14:59	0:56:29	0:18:14	0:22:20	0:12:22	0:08:54
Jul-21	0:09:34	0:15:02	0:25:16	0:16:49	0:14:47	0:43:28	0:19:28	0:20:42	0:11:35	0:09:21
Aug-21	0:09:22	0:16:04	0:32:19	0:22:09	0:15:47	0:51:58	0:19:13	0:27:28	0:13:38	0:10:24
Sep-21	0:10:12	0:15:54	0:25:00	0:30:20	0:17:50	0:49:47	0:19:15	0:19:39	0:16:19	0:09:08

APOT 2 - Sept 2021

	≤ 20 minutes	21-60 minutes	61-120 minutes	121-180 minutes	>180 minutes	Total Patients
SHC	570 99.3%	4 0.7%	0 0.0%	0 0.0%	0 0.0%	574
ECH	782 96.3%	30 3.7%	0 0.0%	0 0.0%	0 0.0%	812
KSC	679 85.5%	114 14.4%	1 0.1%	0 0.0%	0 0.0%	794
RMC	961 83.6%	141 12.3%	42 3.7%	6 0.5%	0 0.0%	1150
OCH	952 93.2%	68 6.7%	1 0.1%	0 0.0%	0 0.0%	1021
VMC	846 74.6%	212 18.7%	67 5.9%	8 0.7%	1 0.1%	1134
GSH	673 91.7%	54 7.4%	2 0.3%	4 0.5%	1 0.1%	734
KSJ	675 92.3%	53 7.3%	3 0.4%	0 0.0%	0 0.0%	731
SLH	380 93.1%	26 6.4%	2 0.5%	0 0.0%	0 0.0%	408
LGH	147 98.0%	3 2.0%	0 0.0%	0 0.0%	0 0.0%	150
TOTAL	6665 88.8%	705 9.4%	118 1.6%	18 0.2%	2 0.0%	7508

Ambulance Patient Offload Time (APOT) - 90th Percentile



	May-21	Jun-21	Jul-21	Aug-21	Sep-21	Oct-21
SHC	0:09:30	0:09:17	0:09:34	0:09:22	0:10:12	0:09:55
ECH	0:16:05	0:15:50	0:15:02	0:16:04	0:15:54	0:15:43
KSC	0:21:35	0:27:35	0:25:16	0:32:19	0:25:00	0:32:07
RMC	0:16:30	0:17:26	0:16:49	0:22:09	0:30:20	0:30:26
OCH	0:14:30	0:14:59	0:14:47	0:15:47	0:17:50	0:18:00
VMC	0:52:39	0:56:29	0:43:28	0:51:58	0:49:47	0:34:19
GSH	0:18:06	0:18:14	0:19:28	0:19:13	0:19:15	0:21:30
KSJ	0:19:54	0:22:20	0:20:42	0:27:28	0:19:39	0:18:52
SLH	0:11:37	0:12:22	0:11:35	0:13:38	0:16:19	0:11:43
LGH	0:09:57	0:08:54	0:09:21	0:10:24	0:09:08	0:08:56

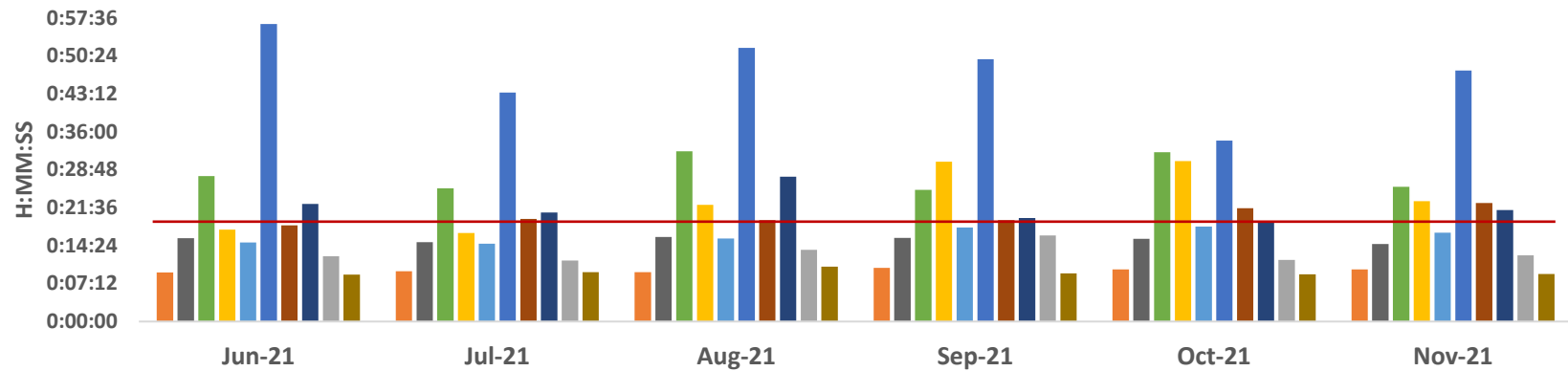
■ SHC
 ■ ECH
 ■ KSC
 ■ RMC
 ■ OCH
 ■ VMC
 ■ GSH
 ■ KSJ
 ■ SLH
 ■ LGH

	SHC	ECH	KSC	RMC	OCH	VMC	GSH	KSJ	SLH	LGH
May-21	0:09:30	0:16:05	0:21:35	0:16:30	0:14:30	0:52:39	0:18:06	0:19:54	0:11:37	0:09:57
Jun-21	0:09:17	0:15:50	0:27:35	0:17:26	0:14:59	0:56:29	0:18:14	0:22:20	0:12:22	0:08:54
Jul-21	0:09:34	0:15:02	0:25:16	0:16:49	0:14:47	0:43:28	0:19:28	0:20:42	0:11:35	0:09:21
Aug-21	0:09:22	0:16:04	0:32:19	0:22:09	0:15:47	0:51:58	0:19:13	0:27:28	0:13:38	0:10:24
Sep-21	0:10:12	0:15:54	0:25:00	0:30:20	0:17:50	0:49:47	0:19:15	0:19:39	0:16:19	0:09:08
Oct-21	0:09:55	0:15:43	0:32:07	0:30:26	0:18:00	0:34:19	0:21:30	0:18:52	0:11:43	0:08:56

APOT 2 - Oct 2021

	≤ 20 minutes	21-60 minutes	61-120 minutes	121-180 minutes	>180 minutes	Total Patients
SHC	625 99.0%	6 1.0%	0 0.0%	0 0.0%	0 0.0%	631
ECH	852 95.6%	39 4.4%	0 0.0%	0 0.0%	0 0.0%	891
KSC	616 77.1%	172 21.5%	10 1.3%	1 0.1%	0 0.0%	799
RMC	981 84.6%	131 11.3%	38 3.3%	7 0.6%	3 0.3%	1160
OCH	951 92.7%	73 7.1%	2 0.2%	0 0.0%	0 0.0%	1026
VMC	1010 80.9%	194 15.5%	40 3.2%	5 0.4%	0 0.0%	1249
GSH	683 89.4%	75 9.8%	5 0.7%	1 0.1%	0 0.0%	764
KSJ	672 92.3%	55 7.6%	1 0.1%	0 0.0%	0 0.0%	728
SLH	386 98.2%	7 1.8%	0 0.0%	0 0.0%	0 0.0%	393
LGH	128 98.5%	2 1.5%	0 0.0%	0 0.0%	0 0.0%	130
TOTAL	6904 88.8%	754 9.7%	96 1.2%	14 0.2%	3 0.0%	7771

Ambulance Patient Offload Time (APOT) - 90th Percentile



	Jun-21	Jul-21	Aug-21	Sep-21	Oct-21	Nov-21
SHC	0:09:17	0:09:34	0:09:22	0:10:12	0:09:55	0:09:54
ECH	0:15:50	0:15:02	0:16:04	0:15:54	0:15:43	0:14:44
KSC	0:27:35	0:25:16	0:32:19	0:25:00	0:32:07	0:25:33
RMC	0:17:26	0:16:49	0:22:09	0:30:20	0:30:26	0:22:49
OCH	0:14:59	0:14:47	0:15:47	0:17:50	0:18:00	0:16:51
VMC	0:56:29	0:43:28	0:51:58	0:49:47	0:34:19	0:47:40
GSH	0:18:14	0:19:28	0:19:13	0:19:15	0:21:30	0:22:29
KSJ	0:22:20	0:20:42	0:27:28	0:19:39	0:18:52	0:21:11
SLH	0:12:22	0:11:35	0:13:38	0:16:19	0:11:43	0:12:35
LGH	0:08:54	0:09:21	0:10:24	0:09:08	0:08:56	0:09:00

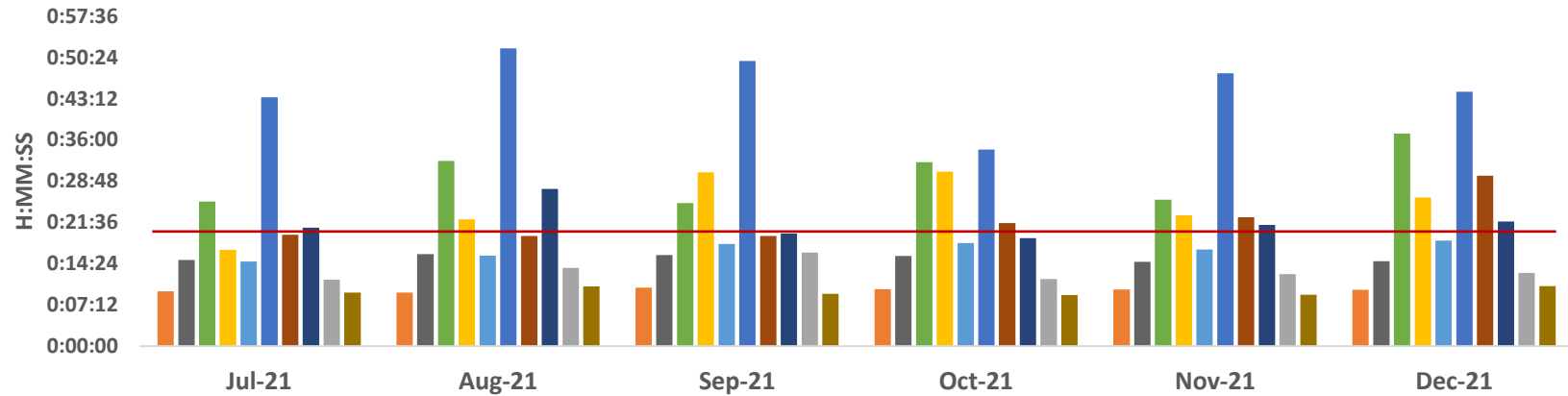
■ SHC
 ■ ECH
 ■ KSC
 ■ RMC
 ■ OCH
 ■ VMC
 ■ GSH
 ■ KSJ
 ■ SLH
 ■ LGH

	SHC	ECH	KSC	RMC	OCH	VMC	GSH	KSJ	SLH	LGH
Jun-21	0:09:17	0:15:50	0:27:35	0:17:26	0:14:59	0:56:29	0:18:14	0:22:20	0:12:22	0:08:54
Jul-21	0:09:34	0:15:02	0:25:16	0:16:49	0:14:47	0:43:28	0:19:28	0:20:42	0:11:35	0:09:21
Aug-21	0:09:22	0:16:04	0:32:19	0:22:09	0:15:47	0:51:58	0:19:13	0:27:28	0:13:38	0:10:24
Sep-21	0:10:12	0:15:54	0:25:00	0:30:20	0:17:50	0:49:47	0:19:15	0:19:39	0:16:19	0:09:08
Oct-21	0:09:55	0:15:43	0:32:07	0:30:26	0:18:00	0:34:19	0:21:30	0:18:52	0:11:43	0:08:56
Nov-21	0:09:54	0:14:44	0:25:33	0:22:49	0:16:51	0:47:40	0:22:29	0:21:11	0:12:35	0:09:00

APOT 2 - Nov 2021

	≤ 20 minutes	21-60 minutes	61-120 minutes	121-180 minutes	>180 minutes	Total Patients
SHC	562 99.8%	1 0.2%	0 0.0%	0 0.0%	0 0.0%	563
ECH	763 97.7%	18 2.3%	0 0.0%	0 0.0%	0 0.0%	781
KSC	564 84.4%	103 15.4%	1 0.1%	0 0.0%	0 0.0%	668
RMC	975 88.6%	108 9.8%	15 1.4%	3 0.3%	0 0.0%	1101
OCH	961 93.5%	65 6.3%	2 0.2%	0 0.0%	0 0.0%	1028
VMC	896 72.1%	272 21.9%	69 5.6%	6 0.5%	0 0.0%	1243
GSH	696 88.3%	85 10.8%	7 0.9%	0 0.0%	0 0.0%	788
KSJ	617 89.7%	69 10.0%	2 0.3%	0 0.0%	0 0.0%	688
SLH	361 97.6%	9 2.4%	0 0.0%	0 0.0%	0 0.0%	370
LGH	168 99.4%	1 0.6%	0 0.0%	0 0.0%	0 0.0%	169
TOTAL	6563 88.7%	731 9.9%	96 1.3%	9 0.1%	0 0.0%	7399

Ambulance Patient Offload Time (APOT) - 90th Percentile



	Jul-21	Aug-21	Sep-21	Oct-21	Nov-21	Dec-21
SHC	0:09:34	0:09:22	0:10:12	0:09:55	0:09:54	0:09:51
ECH	0:15:02	0:16:04	0:15:54	0:15:43	0:14:44	0:14:51
KSC	0:25:16	0:32:19	0:25:00	0:32:07	0:25:33	0:37:07
RMC	0:16:49	0:22:09	0:30:20	0:30:26	0:22:49	0:25:58
OCH	0:14:47	0:15:47	0:17:50	0:18:00	0:16:51	0:18:25
VMC	0:43:28	0:51:58	0:49:47	0:34:19	0:47:40	0:44:25
GSH	0:19:28	0:19:13	0:19:15	0:21:30	0:22:29	0:29:45
KSJ	0:20:42	0:27:28	0:19:39	0:18:52	0:21:11	0:21:46
SLH	0:11:35	0:13:38	0:16:19	0:11:43	0:12:35	0:12:46
LGH	0:09:21	0:10:24	0:09:08	0:08:56	0:09:00	0:10:30

■ SHC
 ■ ECH
 ■ KSC
 ■ RMC
 ■ OCH
 ■ VMC
 ■ GSH
 ■ KSJ
 ■ SLH
 ■ LGH

	SHC	ECH	KSC	RMC	OCH	VMC	GSH	KSJ	SLH	LGH
Jul-21	0:09:34	0:15:02	0:25:16	0:16:49	0:14:47	0:43:28	0:19:28	0:20:42	0:11:35	0:09:21
Aug-21	0:09:22	0:16:04	0:32:19	0:22:09	0:15:47	0:51:58	0:19:13	0:27:28	0:13:38	0:10:24
Sep-21	0:10:12	0:15:54	0:25:00	0:30:20	0:17:50	0:49:47	0:19:15	0:19:39	0:16:19	0:09:08
Oct-21	0:09:55	0:15:43	0:32:07	0:30:26	0:18:00	0:34:19	0:21:30	0:18:52	0:11:43	0:08:56
Nov-21	0:09:54	0:14:44	0:25:33	0:22:49	0:16:51	0:47:40	0:22:29	0:21:11	0:12:35	0:09:00
Dec-21	0:09:51	0:14:51	0:37:07	0:25:58	0:18:25	0:44:25	0:29:45	0:21:46	0:12:46	0:10:30

APOT 2 - Dec 2021

	≤ 20 minutes	21-60 minutes	61-120 minutes	121-180 minutes	>180 minutes	Total Patients
SHC	495 99.2%	4 0.8%	0 0.0%	0 0.0%	0 0.0%	499
ECH	854 97.5%	22 2.5%	0 0.0%	0 0.0%	0 0.0%	876
KSC	552 72.1%	186 24.3%	27 3.5%	1 0.1%	0 0.0%	766
RMC	1006 86.9%	117 10.1%	25 2.2%	7 0.6%	3 0.3%	1158
OCH	984 93.1%	72 6.8%	1 0.1%	0 0.0%	0 0.0%	1057
VMC	976 74.8%	261 20.0%	59 4.5%	5 0.4%	3 0.2%	1304
GSH	626 81.3%	120 15.6%	24 3.1%	0 0.0%	0 0.0%	770
KSJ	708 88.7%	90 11.3%	0 0.0%	0 0.0%	0 0.0%	798
SLH	385 95.3%	18 4.5%	1 0.2%	0 0.0%	0 0.0%	404
LGH	179 97.3%	5 2.7%	0 0.0%	0 0.0%	0 0.0%	184
TOTAL	6765 86.6%	895 11.5%	137 1.8%	13 0.2%	6 0.1%	7816